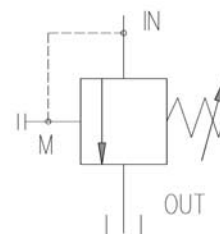


### Specification

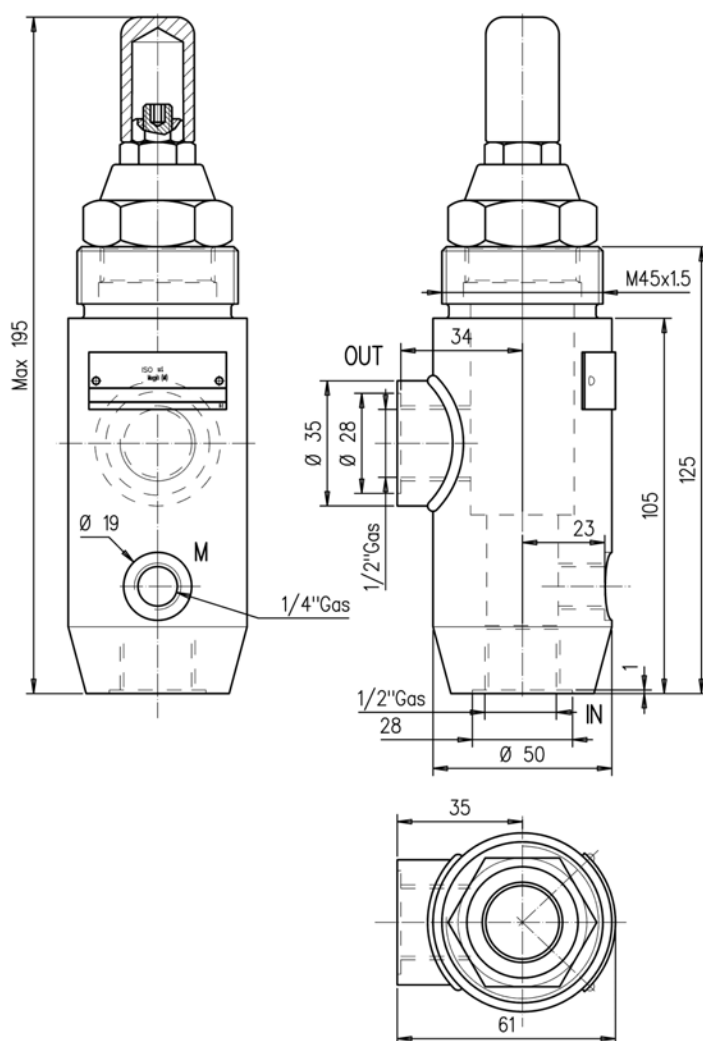
Fluid viscosity:	DIN 51524
Filtration:	25μ
Fluid temperature:	-20°C +75°C

Description: Direct operated control valves.  
In line mounting.

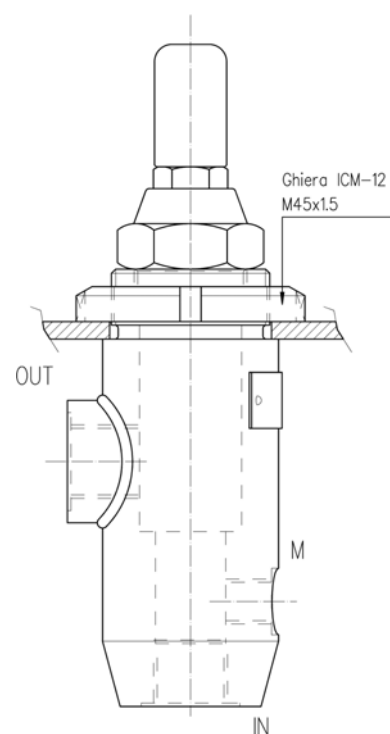
### Symbol



### Dimensions



### Mounting example



### Characteristics

TYPE	MAX. FLOW (l/min.)	PRESSURE	WEIGHT (kg)
DRLVBH 12/15	50	3..15	2
DRLVBH 12/75		5..75	
DRLVBH 12/150		11..150	
DRLVBH 12/250		16..250	
DRLVBH 12/320	20	60..320	
DRLVBH 12/500		150..500	