

VINCKE HYDRAULIC LINE VALVES

DV/DRV series throttle valves / throttle check valves

DV/DRV series throttle valves/throttle check valves are used to regulate the speed of actuators simply and precisely.



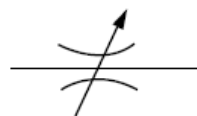
Ordering details

| Sort | Mounting type | Nominal size | Cracking pressure | Thread type |
|---|--|--|------------------------|--|
| DV: Throttle valve DRV: Throttle check valve | No code: threaded mounting P: Subplate mounting | 6: NG6 8: NG8 10: NG10 12: NG12 16: NG16 20: NG20 25: NG25 30: NG30 40: NG40 | a: 0.4 bar b: 4 bar | No code: Inch thread 2: Metric thread |

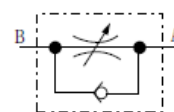
Technical specification

| Nominal size | 6 | 8 | 10 | 12 | 16 | 20 | 25 | 30 | 40 |
|------------------------|------|------|------|------|-----|-----|-----|-----|------|
| Rated flow (l/min) | 20 | 60 | 75 | 140 | 175 | 200 | 300 | 400 | 500 |
| Working pressure (MPa) | 35 | | | | | | | | |
| Weight (kg) | DV | 0.12 | 0.25 | 0.4 | 0.7 | 1.2 | 2.1 | 2.8 | 3.5 |
| | DVP | 0.25 | 0.45 | 0.75 | 1 | 2.4 | 3.6 | 6 | 10.9 |
| | DRV | 0.13 | 0.3 | 0.45 | 0.8 | 1.3 | 2.4 | 3.5 | 4.6 |
| | DRVP | 0.26 | 0.5 | 0.8 | 1.1 | 2.5 | 3.9 | 6.7 | 11 |

Symbol



DV

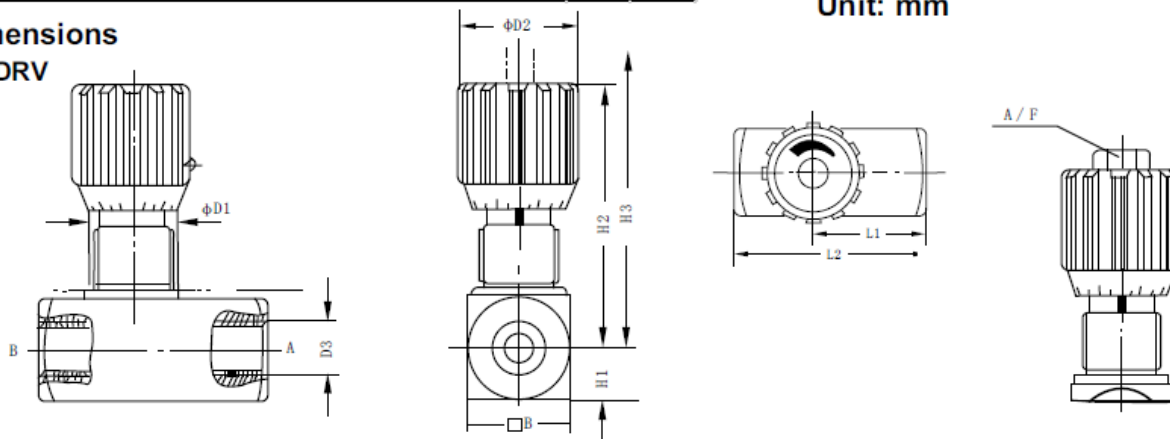


DRV

Unit: mm

Dimensions

DV/DRV



| Nominal size | B | φ D1 | φ D2 | D3 | H1 | H2 | H3 | L1 | | L2 | | A/F |
|--------------|----|------|------|--------|------|-----|-----|----|------|-----|-----|-----|
| | | | | | | | | DV | DRV | DV | DRV | |
| 6 | 15 | 16 | 24 | G1/8 | 8 | 50 | 55 | 19 | 26 | 38 | 45 | |
| 8 | 25 | 19 | 29 | G1/4 | 12.5 | 65 | 72 | 24 | 33.5 | 48 | 45 | |
| 10 | 30 | 19 | 29 | G3/8 | 15 | 67 | 74 | 29 | 41 | 58 | 65 | |
| 12 | 35 | 23 | 38 | G1/2 | 17.5 | 82 | 92 | 34 | 44 | 68 | 73 | |
| 16 | 45 | 23 | 38 | G3/4 | 22.5 | 96 | 106 | 39 | 57 | 78 | 88 | |
| 20 | 50 | 38 | 49 | G1 | 25 | 128 | 145 | 54 | 77 | 108 | 127 | 19 |
| 25 | 60 | 38 | 49 | G1 1/4 | 30 | 133 | 150 | 54 | 93 | 108 | 143 | 19 |
| 30 | 70 | 38 | 49 | G1 1/2 | 35 | 138 | 155 | 54 | 108 | 108 | 143 | 19 |
| 40 | 90 | 38 | 49 | G2 | 45 | 148 | 165 | | 130 | | 165 | 19 |