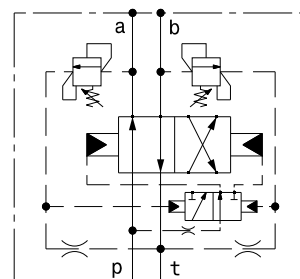
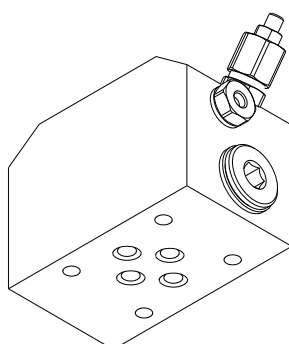
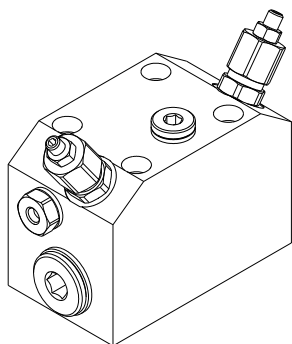


VINCKE HYDRAULIC LINE VALVES

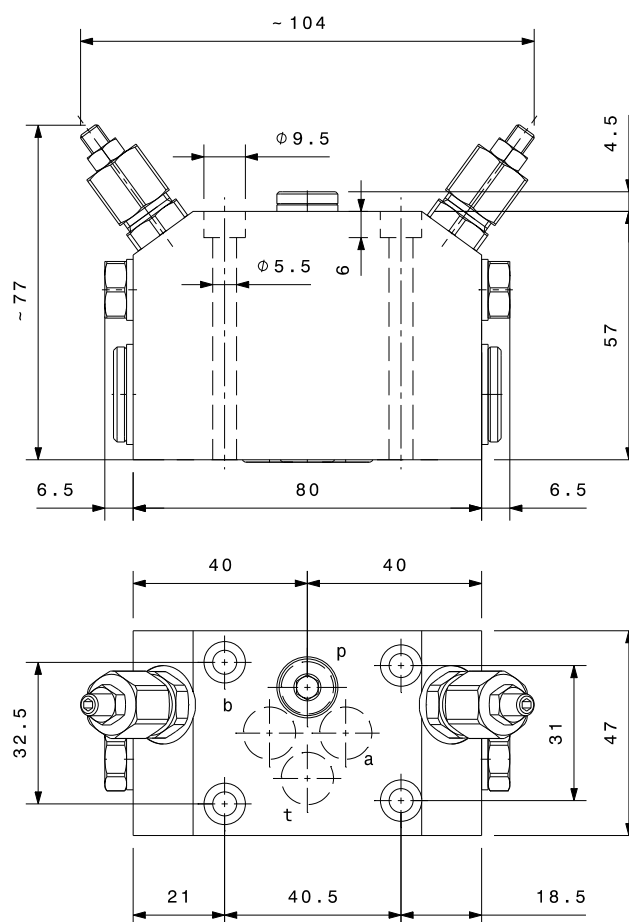
Automatic directional valve NG6



Code. VADFC3

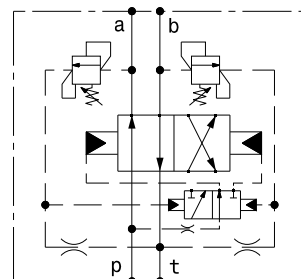
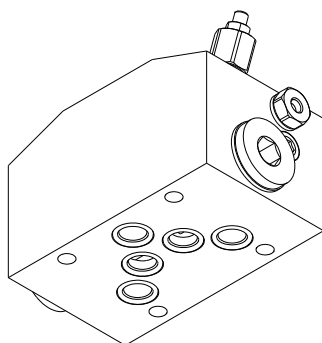
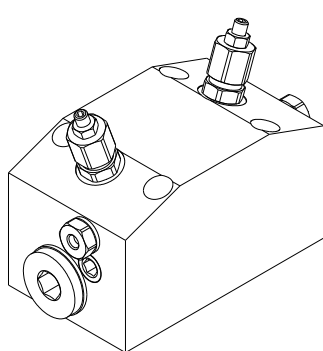
Specification	
Max flow:	30 l/min
Max pressure:	250 bar
Recommended viscosity:	10 ÷ 420 cSt
Working temperature:	-20 ÷ +90° C
Absolute filtration:	25 µ
Standars setting:	180 bar
Adjustment pressure range:	40 ÷ 250 bar

Performaces and calibrations are carried out by using hydraulic oil with 30 cSt viscosity at 50°C



VINCKE HYDRAULIC LINE VALVES

Automatic directional valve NG10



Code. VADFC5

Specification	
Max flow:	70 l/min
Max pressure:	250 bar
Recommended viscosity:	10 ÷ 420 cSt
Working temperature:	-20 ÷ +90° C
Absolute filtration:	25 µ
Estándar setting:	180 bar
Adjustment pressure rage:	40 ÷ 250 bar

Performaces and calibrations are carried out by using hydraulic oil with 30 cSt viscosity at 50°C

