

VNKPK Series Hydraulic Motor

INTRODUCTION

VNKPK series motor are small volume, economical type, which is designed with shaft distribution flow, which adapt the Gerotor gear set design and provide compact volume, high power and low weight.

CHARACTERISTIC FEATURES

- * **Advanced manufacturing devices** for the Gerotor gear set, which provide small volume, high efficiency and long life.
- * **Shaft seal** can bear high pressure of motor of which can be used in parallel or in series.
- * **Advanced construction design**, high power and low weight.



SPECIFICATION Main Specification

Technical data for VNKPK with 25 and 1 in and 1 in splined and 28.56 tapered shaft

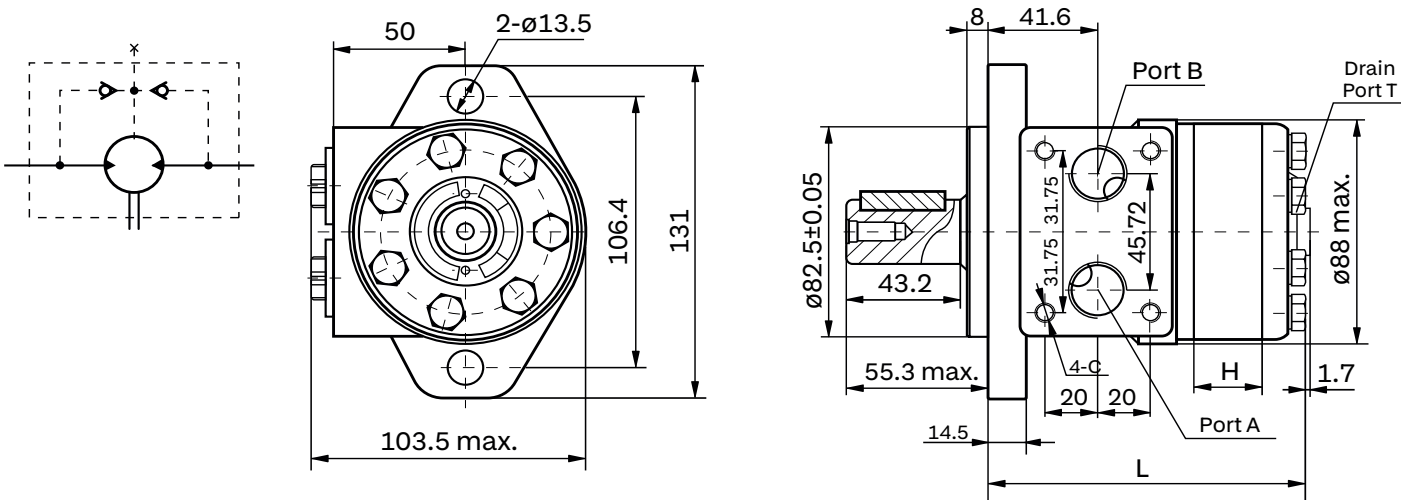
Code	Displacement [cm/rev]	Max.Speed [rpm]	Max.Torque [Nm]		Max.output [kW]		Max.pressure [MPa]		Max. Oil Flow [L/min]
		cont.	cont.	int.	cont.	int.	cont.	int.	cont.
VNKPK 36	36	1081	51	68	5.2	8.6	10.5	14	40
VNKPK 50	51.7	774	73	96	5.2	8.6	10.5	14	40
VNKPK 80	77.7	515	106	143	5.2	8.6	10.5	14	40
VNKPK 100	96.2	416	140	178	5.2	8.6	10.5	14	40
VNKPK 125	120.2	339	162	218	5.2	8.6	10.5	14	40
VNKPK 160	157.2	257	216	288	5.2	8.6	10.5	14	40
VNKPK 200	194.5	211	264	351	5.2	8.6	10.5	14	40
VNKPK 250	240.3	173	281	351	4.6	7	9	11.5	40
VNKPK 315	314.5	128	312	433	3.4	5.8	7	10.5	40
VNKPK 400	389.5	104	392	582	3.4	5.8	7	10.5	40

*Intermittent operation: the permissibile values may occur for max.10% of every minute



VNPK Dimensions and Mounting Data

VNPK DIMENSIONS AND MOUNTING DATA



Type	H	L
VNPK36	7	101
VNPK50	7	101
VNPK80	10.5	104.5
VNPK100	13	107
VNPK125	16	110
VNPK160	21	115
VNPK200	26	120
VNPK250	32	126
VNPK315	42	136
VNPK400	52	146

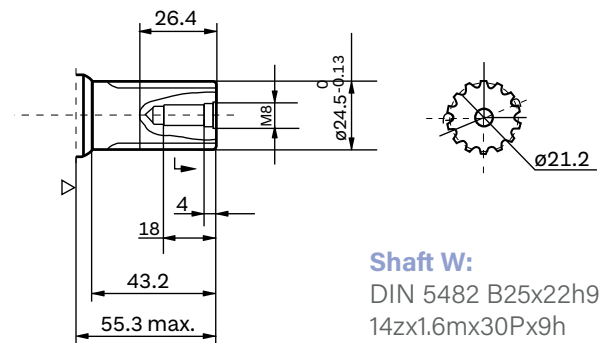
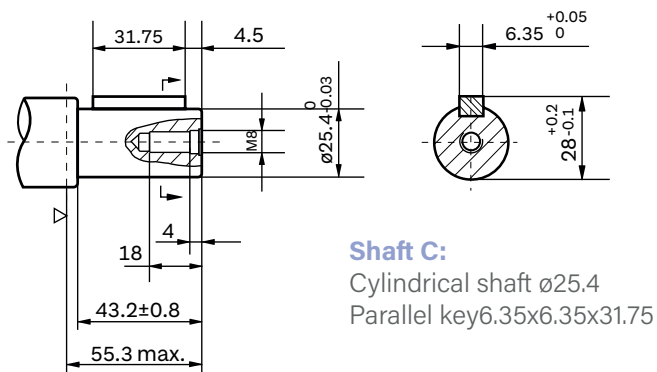
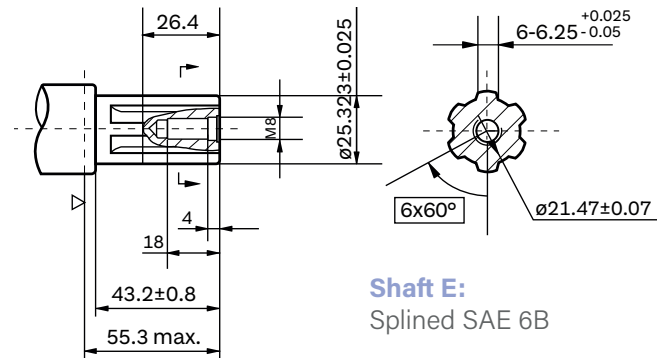
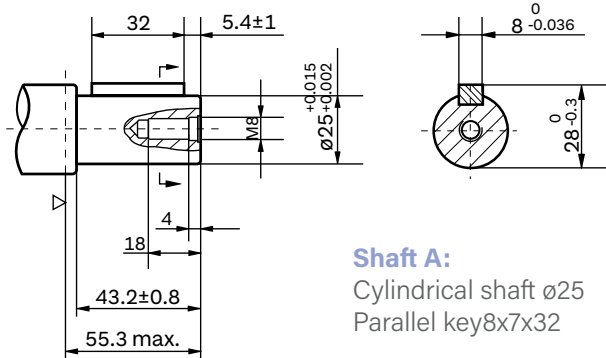
Mounting Code	D (depth)	M (depth)	S (depth)	P (depth)	R (depth)
P(A,B)	G1/2 (15)	M22 x 1.5 (15)	7/8-14 O-ring (16.7)	1/2-14NPTF (15)	PT(RC)1/2 (15)
C	4-M8 (13)	4-M8 (13)	4-5/16-18UNC(13)	4-5/16-18UNC(13)	4-M8 (13)
T	G1/4 (12)	M14 x 1.5 (12)	7/16-20UNF (12)	7/16-20UNF (12)	PT(RC)1/4 (9.7)

Direction of shaft rotation: Standard **When facing shaft end of motor, shaft to rotate:** Clockwise when port "A" is pressurized. Counter-clockwise when port "B" is pressurized.





VNKP K Shaft Extensions



▷ Motor Mounting Surface





Order Information



Pos.1	2	3	4	5	6	7	8
Code	Disp.	Flange	Output shaft	Ports and drain port	Rotation direction	Paint	Unusually Function
Omit	36	2Ø13.5 Rhomb-flange, pilot Ø82.5x8	A Shaft Ø25 , parallel key 8x7x32	D G1/2 Manifold 4xM8, G1/4	Omit Standard Opposite R	00 Omit B S	Omit F 0 SD Standard Free Running No case drain Speed sensor
	50		C Shaft Ø25.4 , parallel key 6.35x6.35x31.75	M M22x1.5 Manifold 4xM8,M14x1.5			
	80		E Shaft Ø25.4, splined key SEA 6B	S 7/8-14 O-ring manifold 4x5/16-18UNC;7/16-20UNF			
	100		2 Shaft Ø24.5, splined B25X22	P 1/2-14NPTF manifold 4x5/16-18UNC;7/16-20UNF			
	125			R PT(Rc)1/2 manifold 4xM8, PT(Rc)1/4			
Omit	160	2	w Cone shaft Ø28.56, parallel key B5x5x14				
	200						
	250						
	315						
	400						

