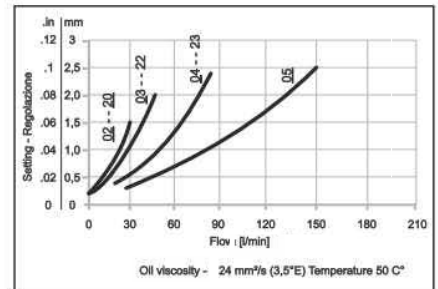
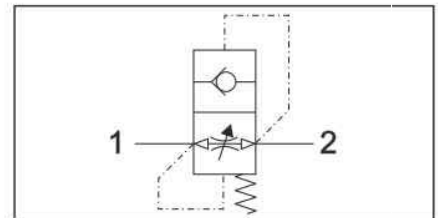
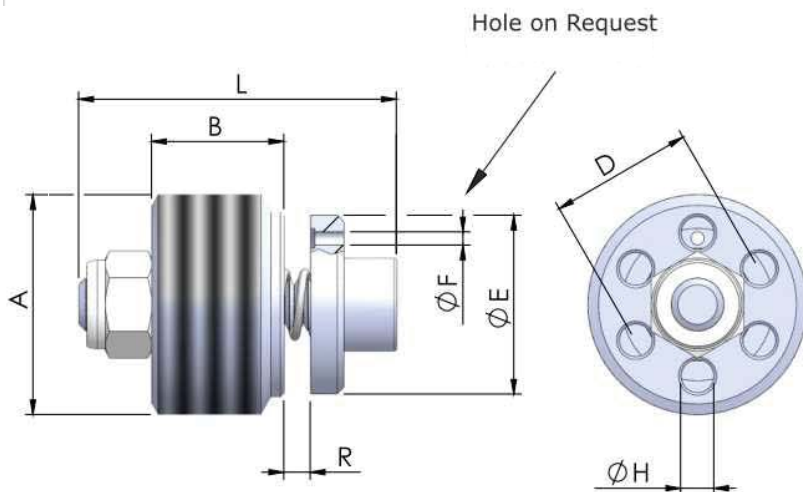


Specification

Fluid viscosity:	10-550mm ² /s
Filtration:	ISO code 16/13
Fluid temperature:	-20°C +80°C
Ambient temperature:	-20°C +50°C



Code	A	B	D	E	H	L	R (Std)	Weight (kg)	Max Flow (l/min)
K-BV-14	1/4 BSPP	8	Ø 8	Ø 10	Ø 2,5	21	0,9	0,008	25
K-BV-38	3/8 BSPP	10	Ø 10	Ø 12,7	Ø 3,25	23	1,5	0,014	50
K-BV-12	1/2 BSPP	13	Ø 12	Ø 15,5	Ø 4	29	2,3	0,030	80
K-BV-34	3/4 BSPP	18	Ø 15,5	Ø 18	Ø 5,2	34	2,5	0,060	150