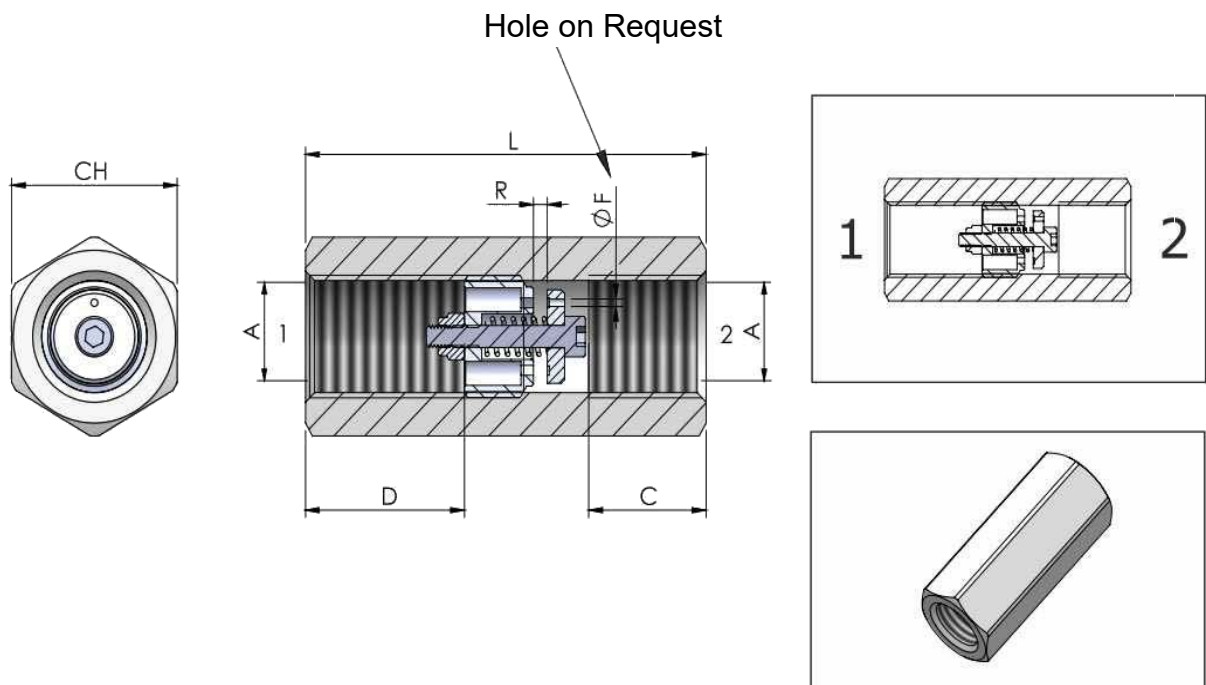


## VINCKE HYDRAULIC LINE VALVES

### Male-Female Adapter Burst Valves

| Specification            |                          |
|--------------------------|--------------------------|
| Max. Operating pressure: | 350bar                   |
| Fluid viscosity:         | 10-550mm <sup>2</sup> /s |
| Filtration:              | ISO CODE 16/13           |
| Fluid temperature:       | -20°C +80°C              |
| Ambient temperature:     | -20°C +50°C              |



| Code       | A        | C  | D    | L  | R (Std) | CH | Weight (kg) |
|------------|----------|----|------|----|---------|----|-------------|
| K-BV-FF-14 | 1/4 BSPP | 14 | 19   | 50 | 0,9     | 19 | 0,09        |
| K-BV-FF-38 | 3/8 BSPP | 17 | 23   | 58 | 1,5     | 24 | 0,16        |
| K-BV-FF-12 | 1/2 BSPP | 18 | 22,5 | 62 | 2,3     | 27 | 0,2         |
| K-BV-FF-34 | 3/4 BSPP | 21 | 23,5 | 75 | 2,5     | 32 | 0,305       |