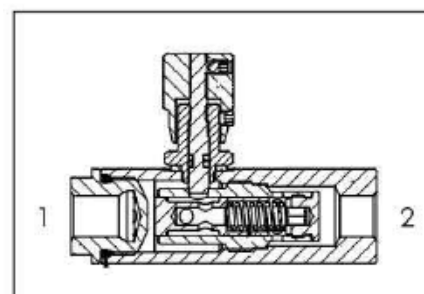
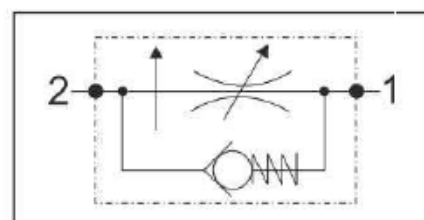
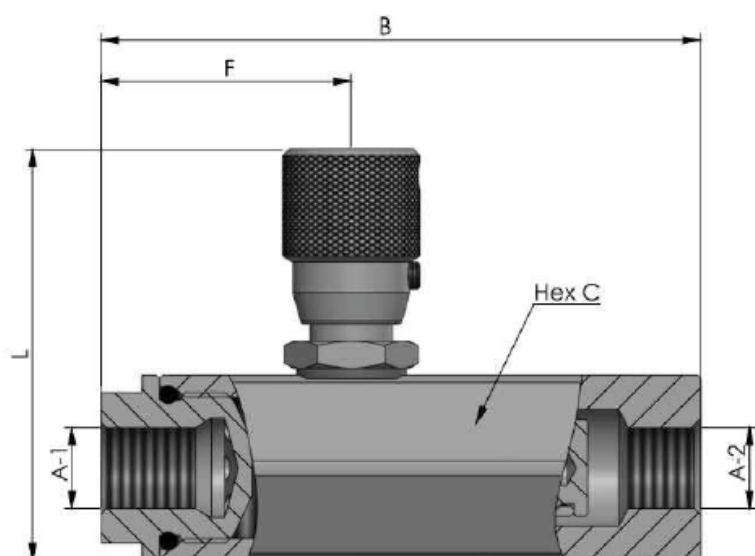


VINCKE HYDRAULIC LINE VALVES

UNIDIRECTIONAL PRESSURE COMPENSATED FLOW CONTROL VALVES

Specification

Fluid viscosity:	10-550m ² /s
Filtration:	ISO 16/13
Fluid temperature:	-20°C +80°C
Ambient temperature:	-20°C +50°C



A-1	A-2	B	F	L	HexC	Max Flow (l/min)	Weight	Max.Press. (bar)
1/4" BSPP	1/4" BSPP	87,5	36,5	60	27	10	0,387	250
3/8" BSPP	3/8" BSPP	87,5	36,5	60	27	18	0,387	250
1/2" BSPP	1/2" BSPP	108	46,5	65	36	20	0,65	250