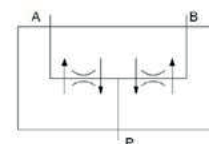


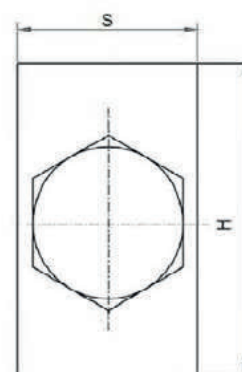
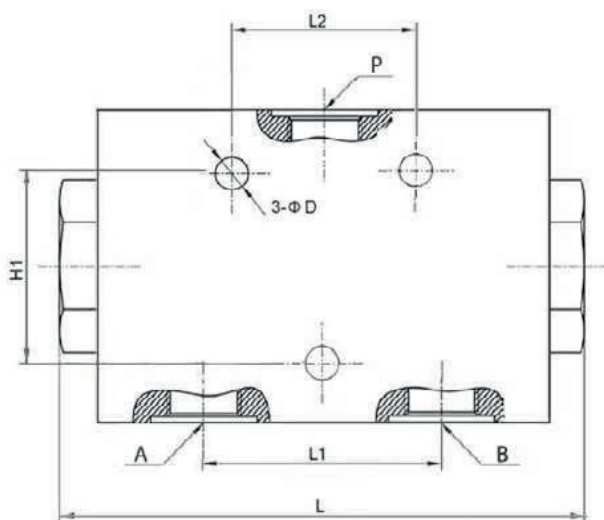
SPOOL FLOW DIVIDERS

SPECIFICATIONS

Fluid viscosity:	10-550mm ² /s
Filtration:	ISO code 16/13
Fluid temperature:	-20°C + 90°C
Ambient temperature:	-20°C + 50°C
Standard seals:	NBR
External surfaces:	Zinc plated steel



DIMENSIONS (mm)



Standard code	Flow/Portata	P	A-B	L	L1	L2	H	H1	S	Max. Pressure	Weight (kg)
K-FDLV-6/10	6-10	3/8	3/8	117	53	40	70	45	40	250	2
K-FDLV-10/20	10-20	3/8	3/8	117	53	40	70	45	40	250	2
K-FDLV-25/40	25-40	1/2	3/8	117	53	40	70	45	40	250	2
K-FDLV-40/60	40-60	1/2	3/8	117	53	40	70	45	40	300	2
K-FDLV-60/80	60-80	1/2	3/8	117	53	40	70	45	40	300	2