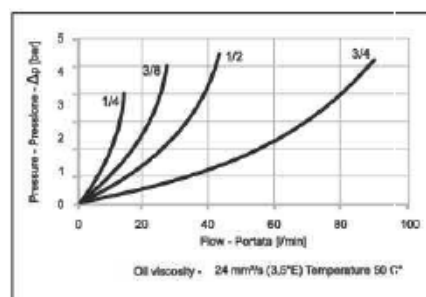
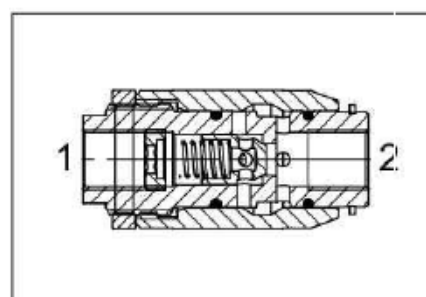
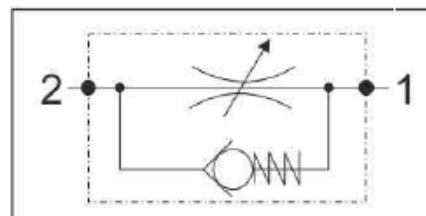
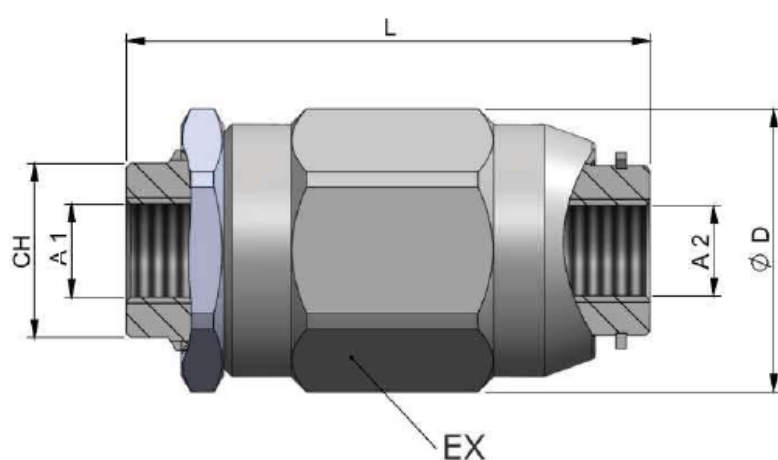


### Specification

Fluid viscosity:	10-550m <sup>2</sup> /s
Filtration:	ISO 16/13
Fluid temperature:	-20°C +80°C
Ambient temperature:	-20°C +50°C
Guided Poppet:	ISO 16/13



Code	A-1	A-2	D Ø	L	CH	EX	Max Flow (l/min)	Weight (kg)	Max.Press.(bar)
K-FRLV-UHX-14	1/4" BSPP	1/4" BSPP	Ø 33,5	62	19	30	15	0,24	350
K-FRLV-UHX-38	3/8" BSPP	3/8" BSPP	Ø 40,5	73	24	36	35	0,43	350
K-FRLV-UHX-12	1/2" BSPP	1/2" BSPP	Ø 46	83	30	41	45	0,68	350
K-FRLV-UHX-34	3/4" BSPP	3/4" BSPP	Ø 60,5	102	36	55	80	1,10	300