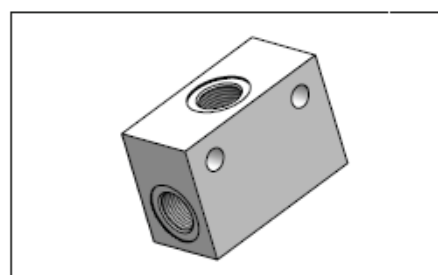
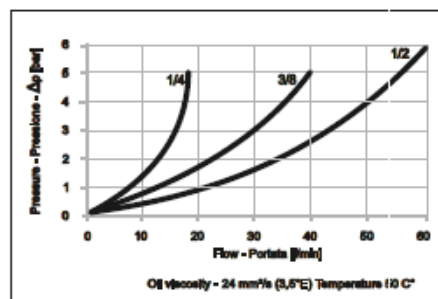
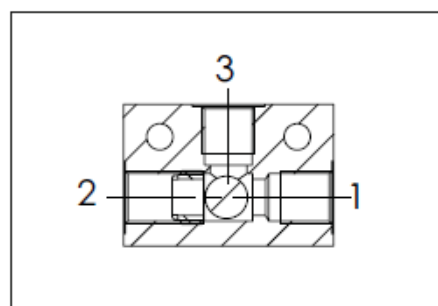
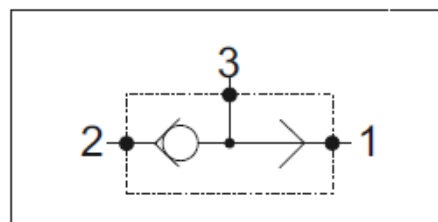
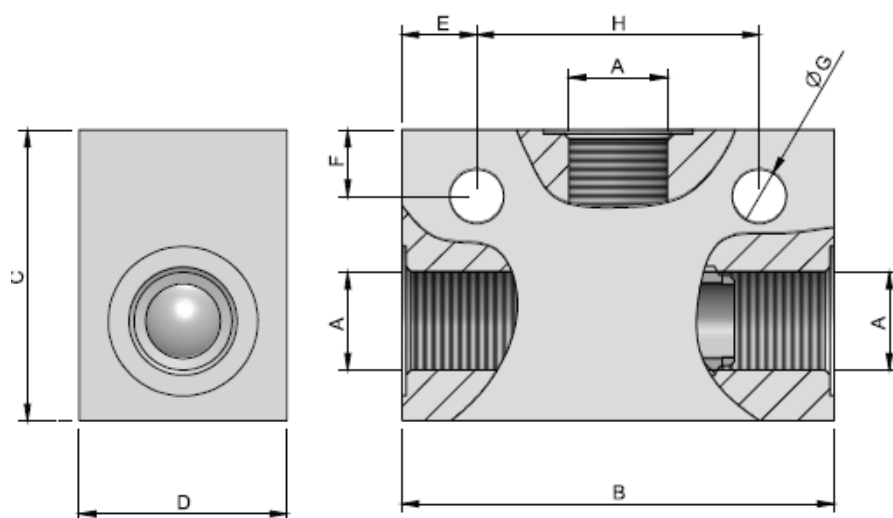


Specification

Fluid viscosity:	10-550m ² /s
Filtration:	ISO 16/13
Fluid temperature:	-20°C +80°C
Ambient temperature:	-20°C +50°C
Galvanized Steel:	---



Code	A	B	C	D	E	F	G	H	Max Flow (l/min)	Weight (kg)	Max.Press.(bar)
K-SHLV-14	1/4" BSPP	52	35	52	9	8	Ø 6,5	34	20	0,30	350
K-SHLV-38	3/8" BSPP	60	40	60	8	8	Ø 6,5	44	40	0,35	350
K-SHLV-12	1/2" BSPP	70	50	70	10	10	Ø 8,5	50	60	0,66	350