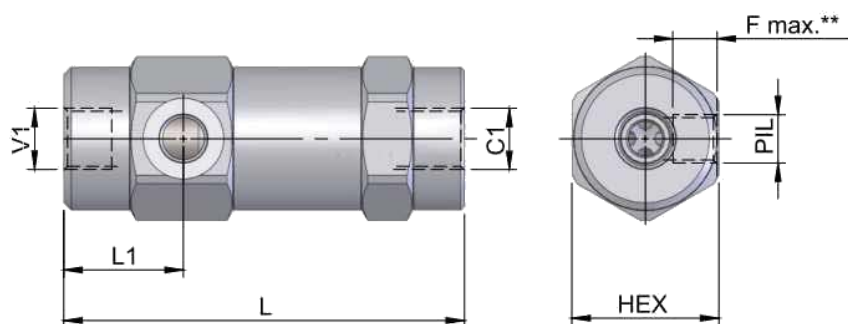
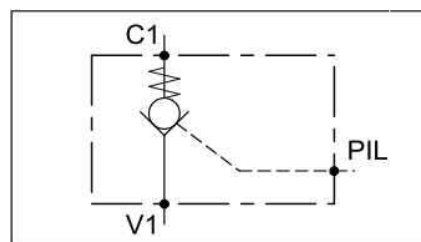
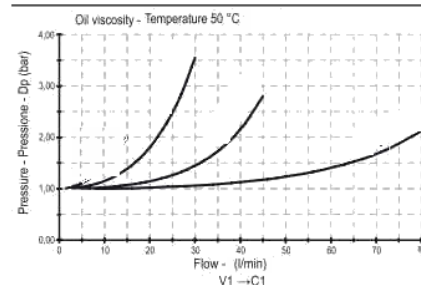


### Specification

Fluid viscosity:	10-550mm <sup>2</sup> /s
Filtration:	ISO 16/13
Fluid temperature:	-20°C +80°C
Ambient temperature:	-20°C +50°C
Rated flow:	See table
Max operating pressure:	See table
External surfaces:	Galvanized
Standard Seals:	NBR 70 Shore A



\*\* Maximum fittings depth



Code	V1 - C1	PIL	F max	L	HEX	Pilot ratio	Max.Press.(bar)	Weight (kg)
K-SPCLV-38	3/8 BSPP	1/4" BSPP	12	109	40	6:01	300	0,9
K-SPCLV-12	1/2 BSPP	1/4" BSPP	12	122	42	4,5:1	300	1,1
K-SPCLV-34	3/4 BSPP	1/4" BSPP	14	131	55	4,5:1	250	2