

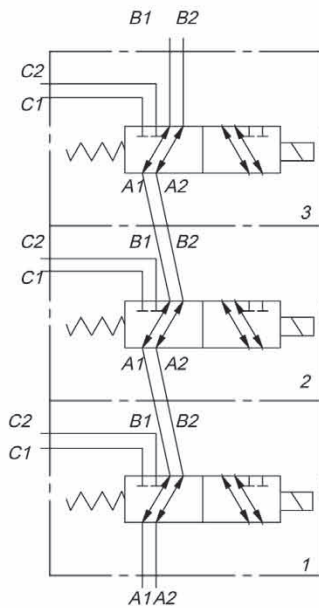
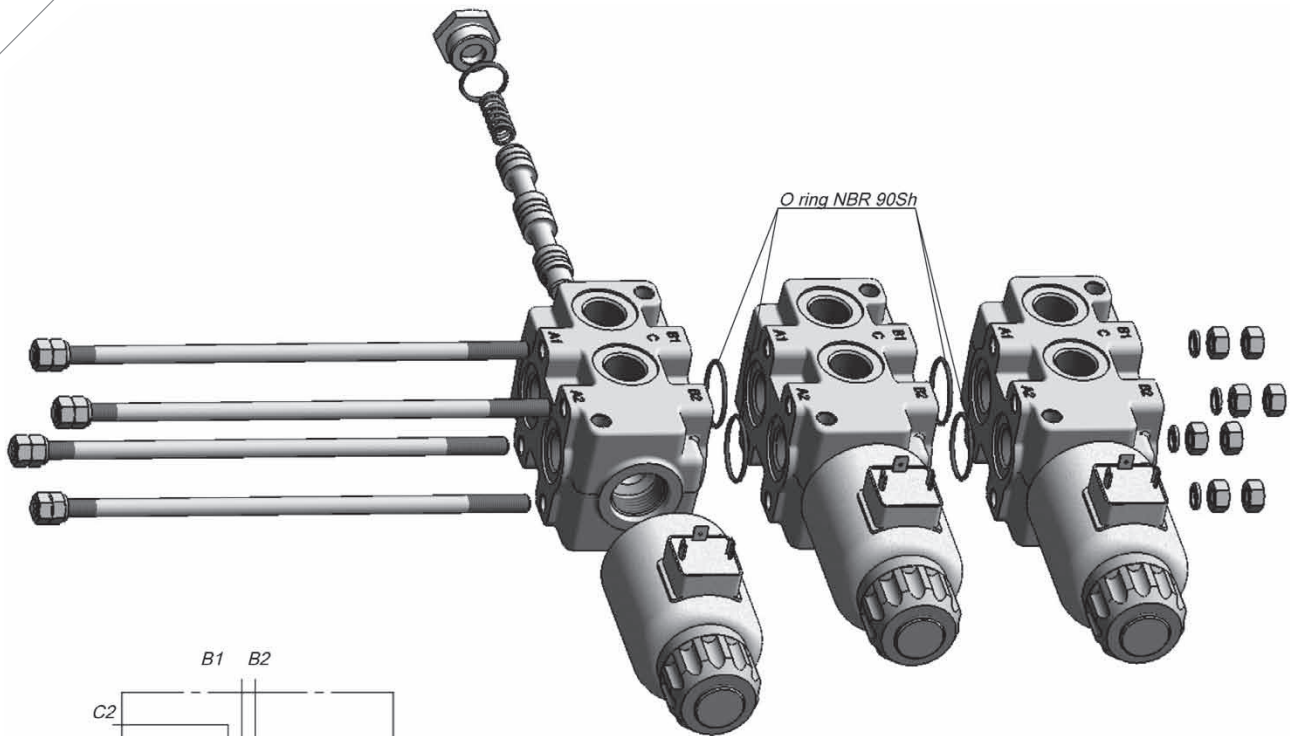
Technical parameters:

Nominal flow	90 l/min
Max operating pressure, with/without L	280 bar
Filtration	18/14 acc. to ISO4406
Hydraulic liquid	Mineral base oil
Viscosity	10-400 mm ² /s
Fluid temperature	-20C to 70C
Ambient temperatura	-30C...+50C
Supply voltage, V	12DC/24DC
Power, W	65
Switching frequency, 1/h	15 000
Duty cycle	100%
Modification/Sections	up to 3

DESCRIPTION: SVV Selector valve has been designed to meet the demand of progressive machine manufacturers for versatile, cost effective, reliable circuit selector. The valve body is produced by cast iron EN-GJL300 alloy and it is machined using high precision, advanced, contemporary techniques. The advanced design of the valve spool ensures that fast spool switching can take place under any conditions without the use of a separate drain line.

CONSTRUCTION: SVV Selector valve stackable 6 port/2way change over valves are designed to be used when extra circuits are to be operated from one control lever on machines such as fork lift trucks, agricultural front end loader, telescopic handlers, and in transmission circuits. SVV can be stacked up to 3 valves allowing for the diverting of flow 2,3 or 4 directions depending on the combination chosen.

MOUNTING: The distributor is fixed with two bolts M8. SVV valve bank can be optionally equipped with housing, containing relief valve, on the outlet end of the valve, protecting the motor or cylinder operated by the B ports against excessive pressure.



for stacking 1-3units

Ordering code :

3 SVV 6/2 - 12DC - G -

Number of valves

Ports / switching positions

Supply voltage 12V DC / 24V DC

Threaded connections

other

code	threaded connections
G	A1, A2, B1, B2, C1, C2 -G1/2
M	A1, A2, B1, B2, C1, C2 -M18x1.5
S	A1, A2, B1, B2, C1, C2 -SAE8

flow rate	l/min	90
P	bar	250
oil temperature	°C	-20/+70
viscosity	mm ² /s	15-380
filtration		9