

Technical parameters:

Ambient temperature	-40C...+60C
Hydraulic liquid -mineral oil based/hydraulic oil Viscosity	12 ...800 mm ² /s
Fluid temperature	-15C...+80C
Filtration	10 to NAS 1638
Max operating pressure, P=250; T=50 bar	A , B = 300 bar
Pressure for authomatical release of spool	70-140, bar
Leakage(A,B-T)	10cm ³ /min at 120bar
Nominal flow	35 l/min
Spool stroke	+/- 7,9 mm
Actuating force	< 220 N

- Hydraulically balanced, hard chrome plated spool
- Lever system in which the handle can be installed in up or down position
- In neutral position both works ports are blocked and the pump unloads to tank

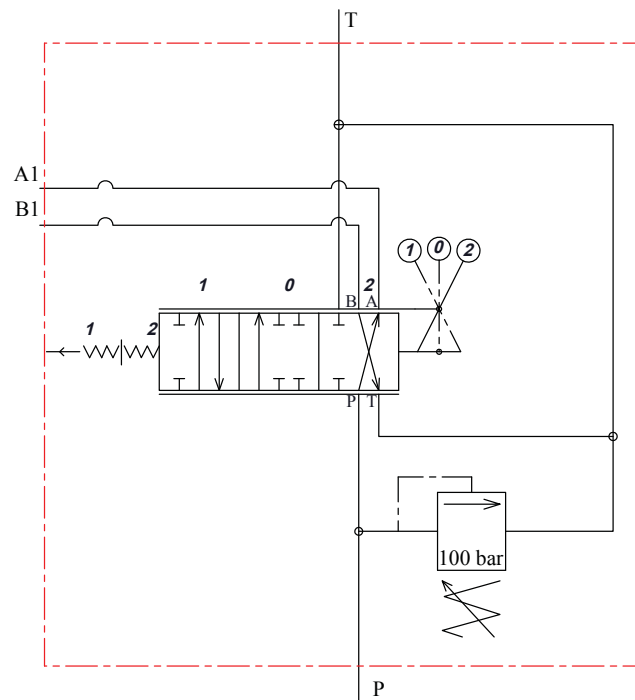
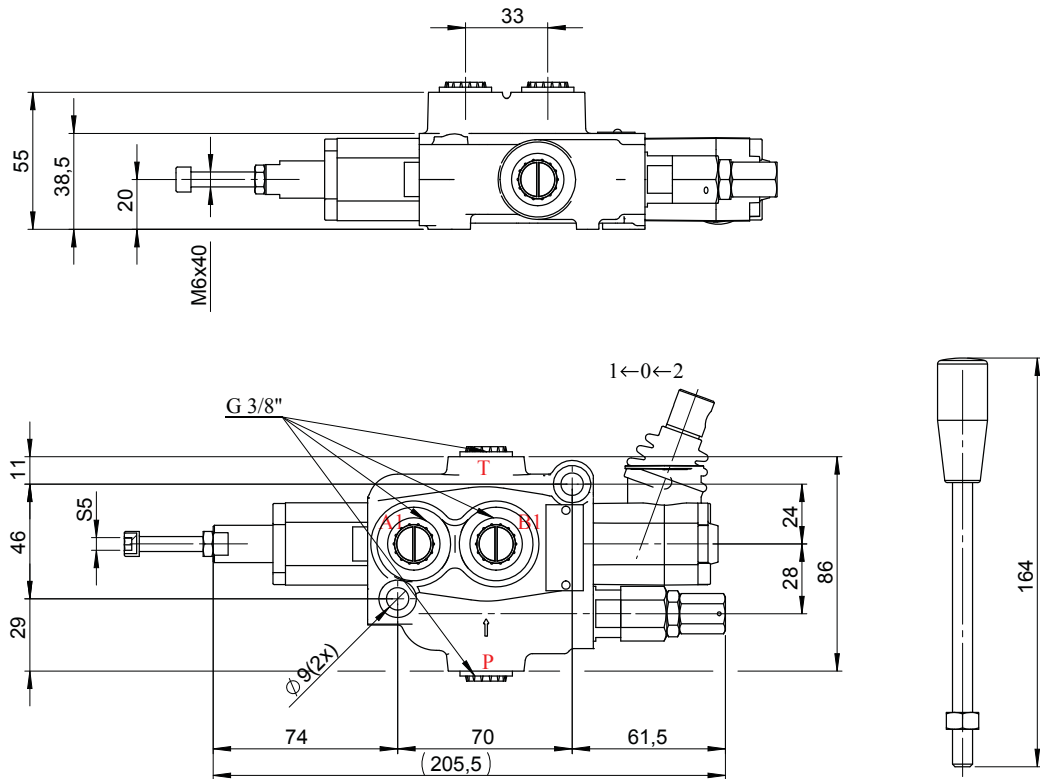
DESCRIPTION: The hydraulic distributor P35S is used for switching on/off and directing the working fluid between head flow generators (hydraulic pumps), head flow consumers (hydraulic cylinders, motors, etc.), and the tank. It has a setting from 70 to 140 bar for automatic switch-off. It is designed as a "log splitter valve".

CONSTRUCTION: The hydraulic distributor P35S is a mono-block distributor with manual control. The body is made of cast iron EN-GJL300, and the spool is made of carburized steel with hard chrome plating.

MOUNTING: The distributor is fixed with 3 (three) bolts M8

DIRECTIONAL CONTROL VALVES
P35S LOG SPLITTER – D.C. VALVE

8





Technical parameters:

Ambient temperature	-40C...+60C
Hydraulic liquid -mineral oil based/hydraulic oil Viscosity	12 ...800 mm ² /s
Fluid temperature	-15C...+80C
Filtration	10 to NAS 1638
Max operating pressure, P=250; T=50 br	A , B = 300 bar
Pressure for authomatical release of spool	70-140, bar
Leakage(A,B-T)	15cm ³ /min at 120bar
Nominal flow	50 l/min
Spool stroke	+/- 7,9 mm
Actuating force	< 220 N

- Hydraulically balanced, hard chrome plated spool
- Lever system in which the handle can be installed in up or down position
- In neutral position both works ports are blocked and the pump unloads to tank

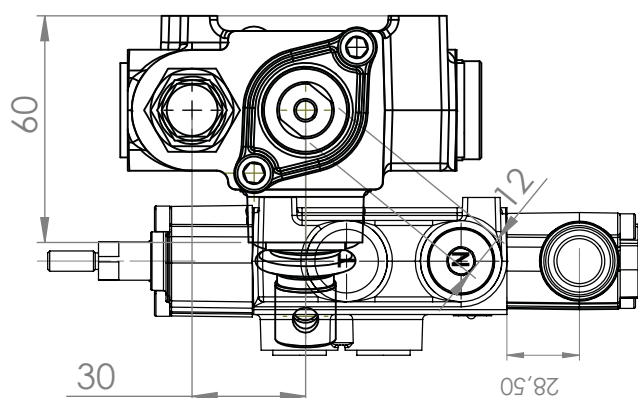
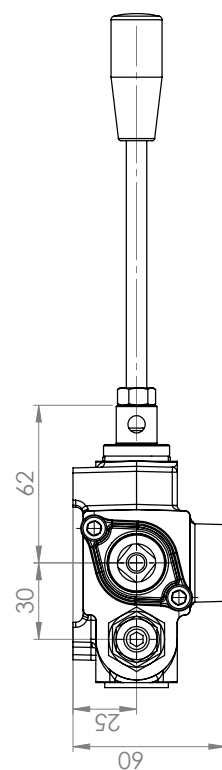
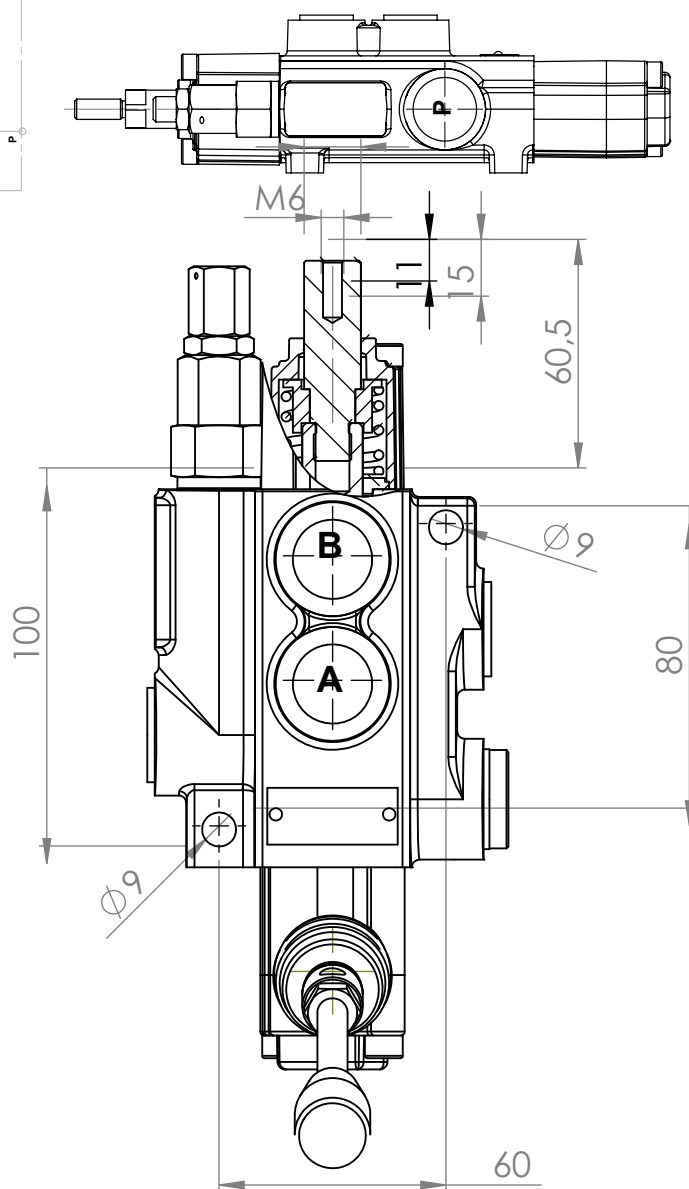
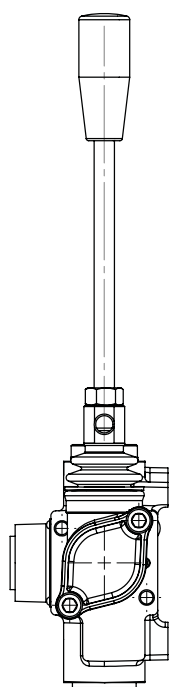
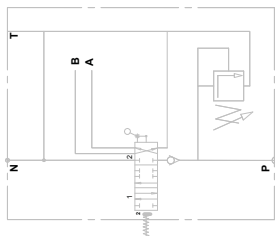
DESCRIPTION: The hydraulic distributor Z50 LS is used for switching on/off and directing the working fluid between head flow generators (hydraulic pumps), head flow consumers (hydraulic cylinders, motors, etc.), and the tank. It has a setting from 70 to 140 bar for automatic switch-off. It is designed as a "log splitter valve".

CONSTRUCTION: The hydraulic distributor Z50 LS is a mono-block distributor with manual control. The body is made of cast iron EN-GJL300, and the spool is made of carburized steel with hard chrome plating.

MOUNTING: The distributor is fixed with 3 (three) bolts M8.

DIRECTIONAL CONTROL VALVES
Z50 LOG SPLITTER – D.C. VALVE

21





Technical parameters:

Nominal flow rating	120 l/min
Max operating pressure, P=250; T=10 bar	A , B = 300 bar
Leakage (A,B>T)	30 cm ³ /min at 120 bar
Hydraulic liquid Mineral base oil Viscosity	12...800 mm ² /s
Fluid temperature	-20C to 80C
Ambient temperature	-40C...+60C
Spool stroke	10 mm
Actuating force	<300 N

- Hydraulically balanced, hard chrome plated spool
- Lever system in which the handle can be installed in up or down position
- In neutral position both works ports are blocked and the pump unloads to tank

DESCRIPTION: The hydraulic distributor P120 LS is used for switching on/off and directing the working fluid between head flow generators (hydraulic pumps), head flow consumers (hydraulic cylinders, motors, etc.), and the tank. It has a setting from 70 to 140 bar for automatic switch-off. It is designed as a "log splitter valve".

CONSTRUCTION: The hydraulic distributor P120S is a mono-block distributor with manual control. The body is made of cast iron EN-GJL300, and the spool is made of carburized steel with hard chrome plating.

MOUNTING: The distributor is fixed with 3 (three) bolts M10.