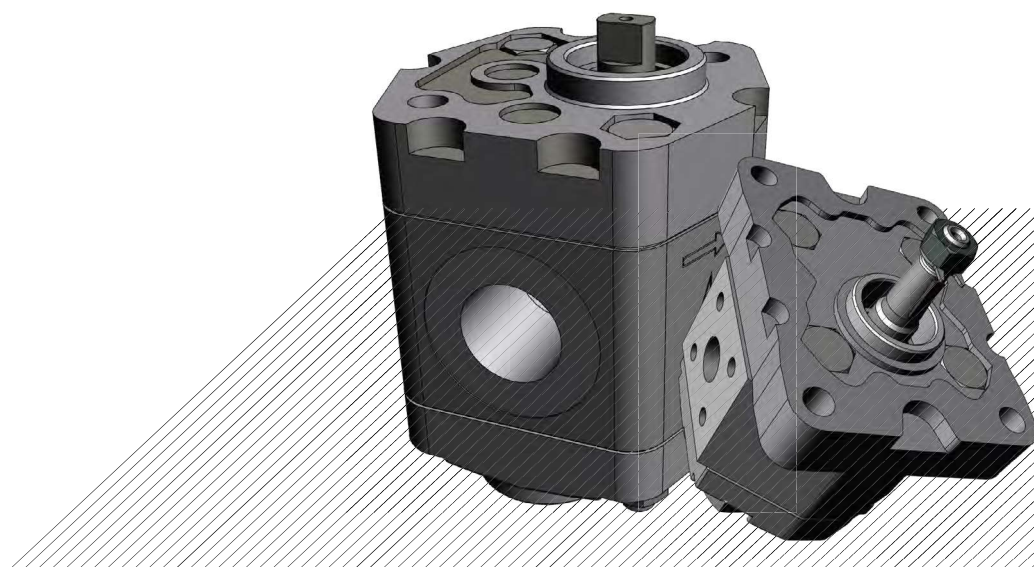


VNK1 GEAR PUMP GROUP 1



HOW TO ORDER

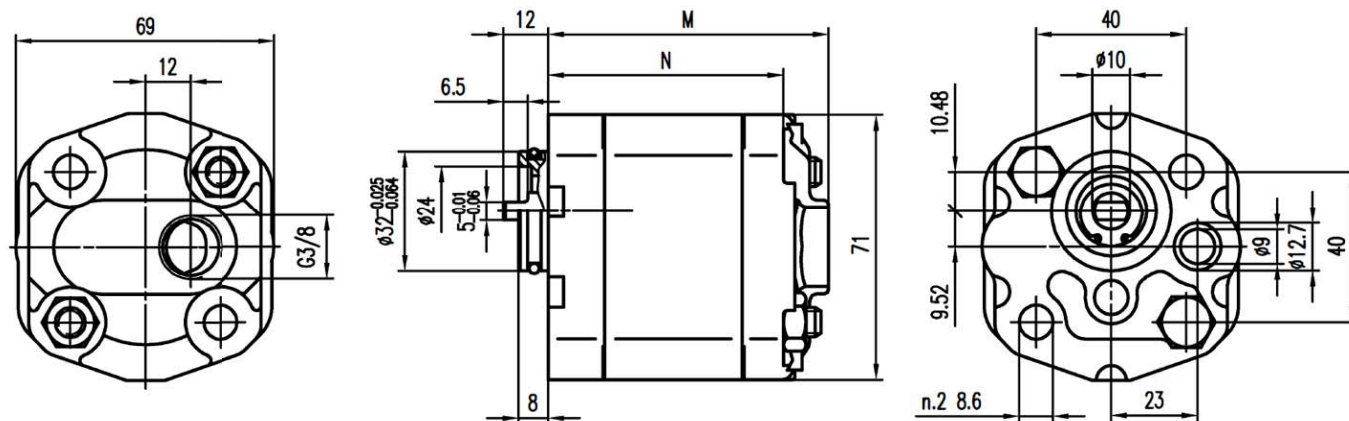
Single pump	Group	Size	Shaft *	Flange *	Inlet port *	Outlet port *	Rotation
VNKB	1	0,8	* see specifications of shafts, flanges and ports in pages 12, 13.				C Clockwise
		1,1					A Counter clockwise
		1,3					
		1,6					A Counter clockwise
		1,8					
		2,1					
		2,7					
		3,2					
		3,7					
		4,2					
		5					
		5,8					
		7					
		8					
		9,8					



End cover: G3/8 thread depth 12. To mount the pump, n.2 M8 screws, with a torque wrench setting fixed at 27 ± 3 Nrn.



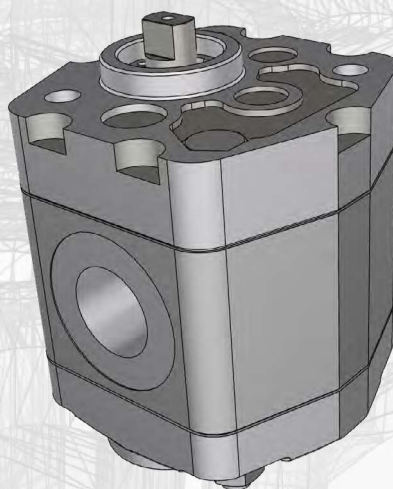
OUTLET



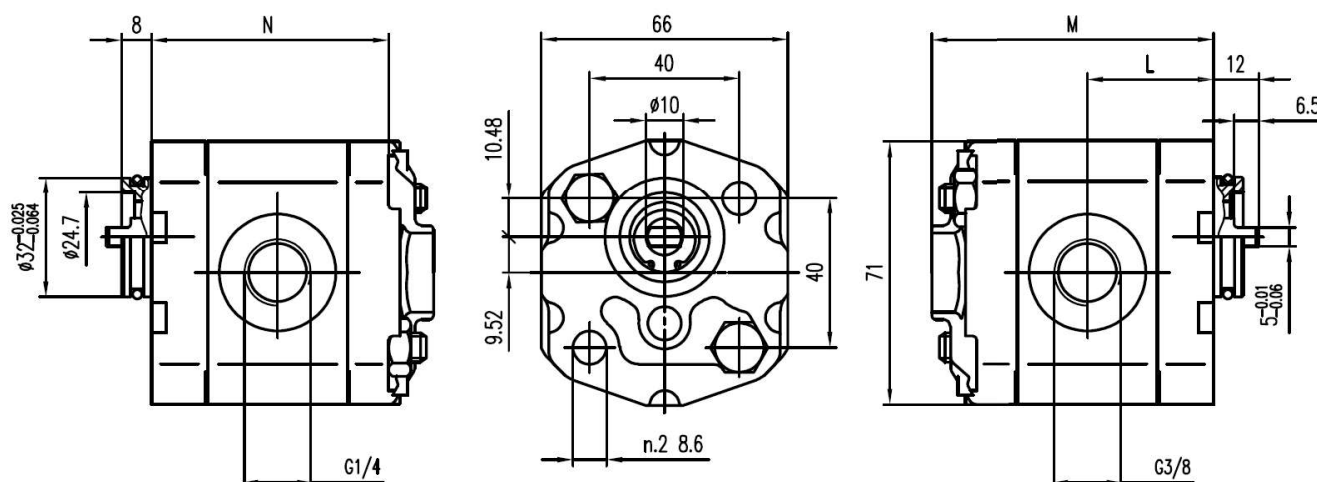
Type	Displacement	Max. Pressure			Max. Speed	Min. Speed	Dimensions	
							M	L
	cm³/rev	P1	P2	P3	r/min	r/min	mm	mm
VNK-1-0.8-02-B-38-OR-	0.8	250	270	290	6000	1000	73,5	61,5
VNK-1-1.1-02-B-38-OR-	1.1	250	270	290	6000	1000	74	62
VNK-1-1.3-02-B-38-OR-	1.3	250	270	290	6000	1000	75	63
VNK-1-1.6-02-B-38-OR-	1.6	250	270	290	6000	1000	76	64
VNK-1-1.8-02-B-38-OR-	1.8	250	270	290	6000	1000	77	65
VNK-1-2.1-02-B-38-OR-	2.1	250	270	290	6000	1000	78	66
VNK-1-2.7-02-B-38-OR-	2.7	250	270	290	6000	800	80	68
VNK-1-3.2-02-B-38-OR-	3.2	250	270	290	5000	800	82	70
VNK-1-3.7-02-B-38-OR-	3.7	250	270	290	4500	800	84	72
VNK-1-4.2-02-B-38-OR-	4.2	250	270	290	4000	800	86	74
VNK-1-4.8-02-B-38-OR-	4.8	230	250	270	3500	600	88	76
VNK-1-5.8-02-B-38-OR-	5.8	230	250	270	3000	600	92	80
VNK-1-5.8-02-B-38-OR-	7	210	230	250	2500	600	96	84
VNK-1-8.0-02-B-38-OR-	8	180	200	230	2100	600	100	88
VNK-1-9.8-02-B-38-OR-	9.8	150	170	190	2100	600	104	92



M6 threads depth 12. To mount the pump, n.2 M8 screws, with a torque wrench setting fixed at 27 ± 3 Nm.



INLET



Type	Displacement	Max. Pressure			Max. Speed	Min. Speed	Dimensions		
							M	N	L
	cm³/rev	P1	P2	P3	r/min	r/min	mm	mm	mm
VNK-1-0.8-02-B-38-38-	0.8	250	270	290	6000	1000	73.5	61,5	32.8
VNK-1-1.1-02-B-38-38-	1.1	250	270	290	6000	1000	74	62	33
VNK-1-1.3-02-B-38-38-	1.3	250	270	290	6000	1000	75	63	33.5
VNK-1-1.6-02-B-38-38-	1.6	250	270	290	6000	1000	76	64	34
VNK-1-1.8-02-B-38-38-	1.8	250	270	290	6000	1000	77	65	34.5
VNK-1-2.1-02-B-38-38-	2.1	250	270	290	6000	1000	78	66	35
VNK-1-2.7-02-B-38-38-	2.7	250	270	290	6000	800	80	68	36
VNK-1-3.2-02-B-38-38-	3.2	250	270	290	5000	800	82	70	37
VNK-1-3.7-02-B-38-38-	3.7	250	270	290	4500	800	84	72	38
VNK-1-4.2-02-B-38-38-	4.2	250	270	290	4000	800	86	74	39
VNK-1-4.8-02-B-38-38-	4.8	230	250	270	3500	600	88	76	40
VNK-1-5.8-02-B-38-38-	5.8	230	250	270	3000	600	92	80	42
VNK-1-5.8-02-B-38-38-	7	210	230	250	2500	600	96	84	44
VNK-1-8.0-02-B-38-38-	8	180	200	230	2100	600	100	88	46
VNK-1-9.8-02-B-38-38-	9.8	150	170	190	2100	600	104	92	48



V NK1-*1-1

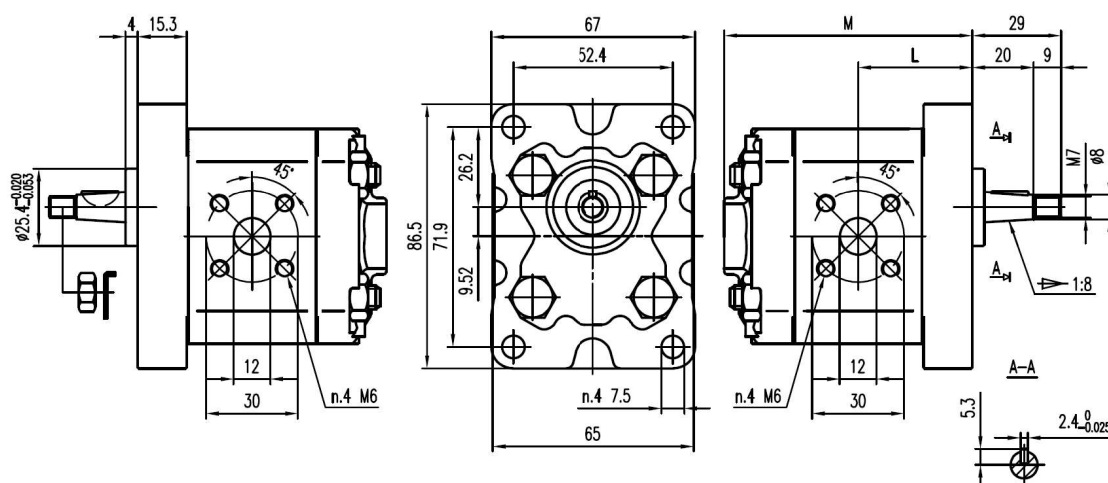
M6 thread depth 12. To mount the pump, n.4 MB screws, with a torque wrench setting fixed at 27 ± 3 Nm.

Shaft M7 nut, with a torque wrench setting fixed at 8 Nm.



OUTLET

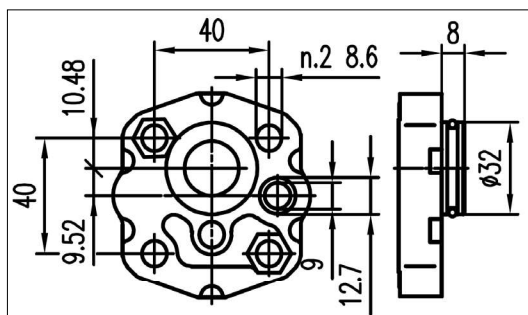
INLET



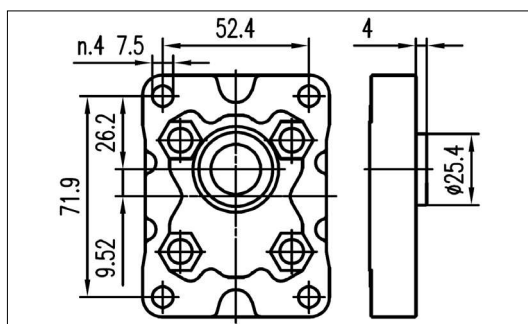
Type	Displacement cm ³ /rev	Max. Pressure			Max. Speed r/min	Min. Speed r/min	Dimensions	
		P1	P2	P3			M	L
VNK-1-0.8-1-1-*-*	0.8	250	270	290	6000	1000	73.5	32.8
VNK-1-1.1-1-1-*-*	1.1	250	270	290	6000	1000	74	33
VNK-1-1.3-1-1-*-*	1.3	250	270	290	6000	1000	75	33.5
VNK-1-1.6-1-1-*-*	1.6	250	270	290	6000	1000	76	34
VNK-1-1.8-1-1-*-*	1.8	250	270	290	6000	1000	77	34.5
VNK-1-2.1-1-1-*-*	2.1	250	270	290	6000	1000	78	35
VNK-1-2.7-1-1-*-*	2.7	250	270	290	6000	800	80	36
VNK-1-3.2-1-1-*-*	3.2	250	270	290	5000	800	82	37
VNK-1-3.7-1-1-*-*	3.7	250	270	290	4500	800	84	38
VNK-1-4.2-1-1-*-*	4.2	250	270	290	4000	800	86	39
VNK-1-4.8-1-1-*-*	4.8	230	250	270	3500	600	88	40
VNK-1-5.8-1-1-*-*	5.8	230	250	270	3000	600	92	42
VNK-1-7-1-1-*-*	7	210	230	250	2500	600	96	44
VNK-1-8-1-1-*-*	8	180	200	230	2100	600	100	46
VNK-1-9.8-1-1-*-*	9.8	150	170	190	2100	600	104	48



FRONT COVERS

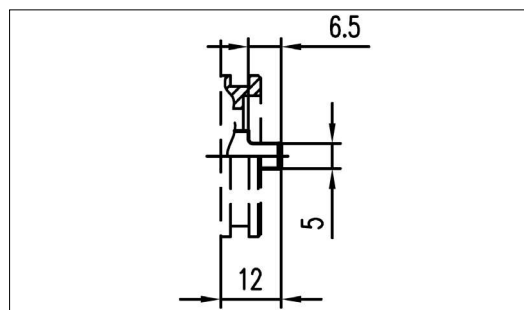


B



1

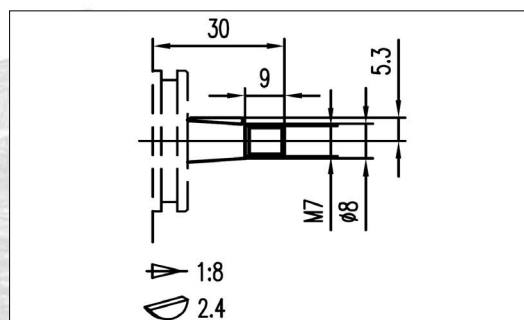
SHAFTS



02

Max. Torque

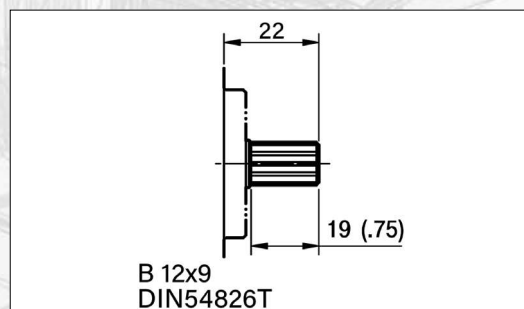
20 Nm



1

Max. Torque

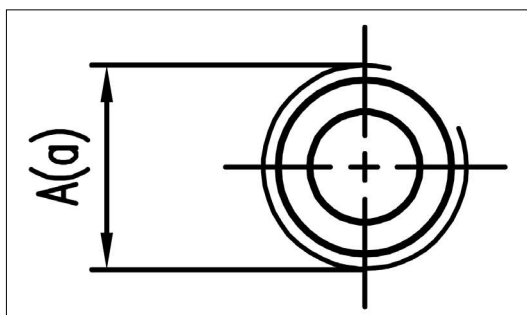
20 Nm



7

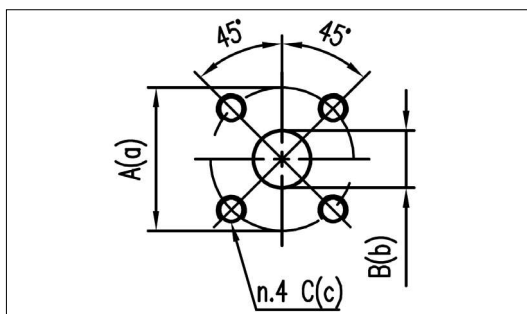


PORTS



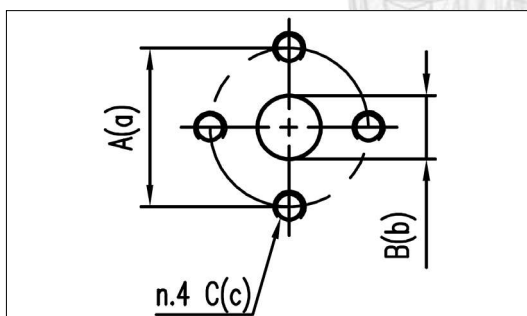
3838

INLET	OUTLET
A	a
G3/8	G3/8



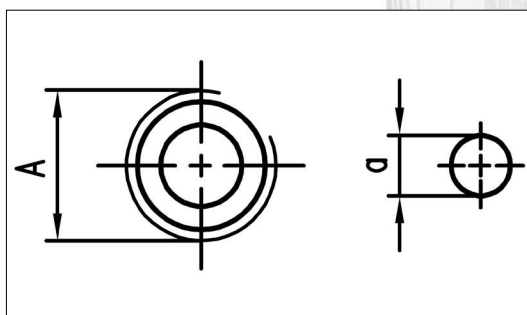
3030

INLET			OUTLET		
A	B	C	a	b	c
30	12	M6	30	12	M6



3030R

INLET			OUTLET		
A	B	C	a	b	c
30	12	M6	30	12	M6



380R

INLET	OUTLET
A	a
G3/8	Ø9

