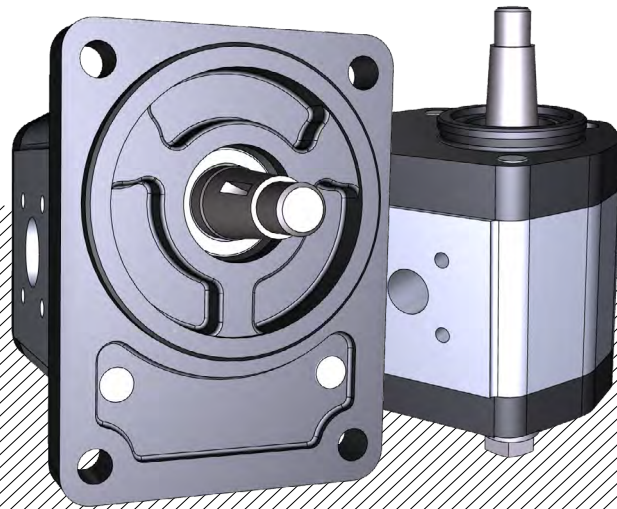


VNK2 GEAR PUMP GROUP 2



HOW TO ORDER

Single pump	Group	Size	Shaft *	Flange *	Inlet port *	Outlet port *	Rotation	
VNKB	2	4	* see specifications of shafts, flanges and ports in pages 22, 23, 24				C	Clockwise
		6					A	Counter clockwise
		8						
		10						
		12						
		14						
		16						
		18						
		20						
		23						
		25						
		30						



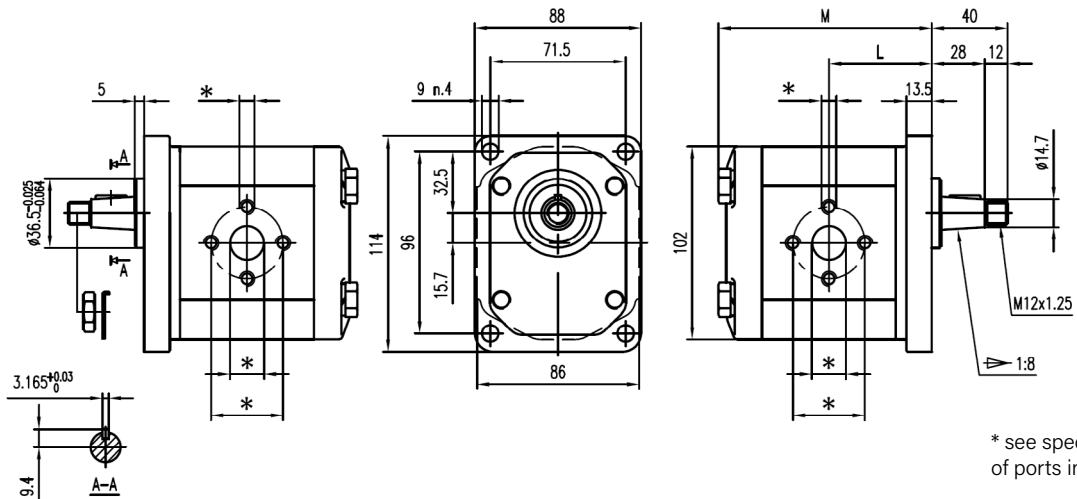
VNK2-*-3-3-*

M6 thread depth 13, M8 thread depth 17. To mount the pump, n.4 M10 screws, with a torque wrench setting fixed at 70 ...W75 Nm. Shaft M 12x1.25 nut, with a torque wrench setting fixed at 50 Nm.



OUTLET

INLET

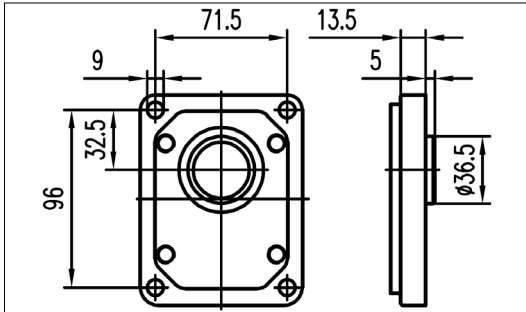


* see specifications of ports in page 24.

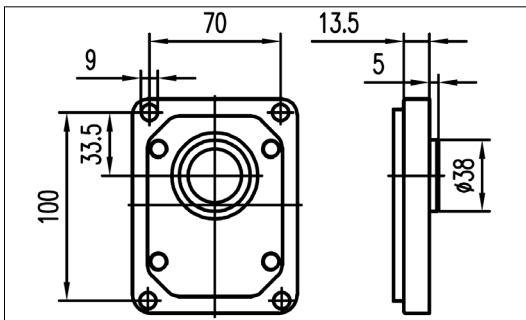
Type	Displacement cm ³ /rev	Max. Pressure			Max. Speed r/min	Min. Speed r/min	Dimensions	
		P1	P2	P3			M mm	L mm
VNK-2-4-3-3-*-*	4	270	285	300	4000	600	92,7	44,4
VNK-2-6-3-3-*-*	6	270	285	300	4000	600	96	46
VNK-2-8-3-3-*-*	8	270	285	300	3500	500	99,3	47,7
VNK-2-10-3-3-*-*	10	270	285	300	3000	500	102,6	49,3
VNK-2-12-3-3-*-*	12	270	285	300	3000	500	105,9	51
VNK-2-14-3-3-*-*	14	250	265	280	4000	500	109,3	52,7
VNK-2-16-3-3-*-*	16	250	265	280	4000	500	112,7	54,4
VNK-2-18-3-3-*-*	18	250	265	280	3600	400	116	56
VNK-2-20-3-3-*-*	20	220	235	250	3200	400	119,3	57,7
VNK-2-23-3-3-*-*	23	220	235	250	3000	400	122,6	59,3
VNK-2-25-3-3-*-*	25	200	215	230	3000	400	127,6	61,8
VNK-2-28-3-3-*-*	28	180	190	200	2500	400	132,6	64,3
VNK-2-30-3-3-*-*	30	160	170	180	2500	400	135,9	66



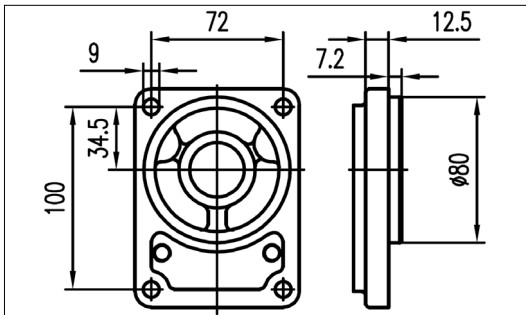
FRONT COVERS



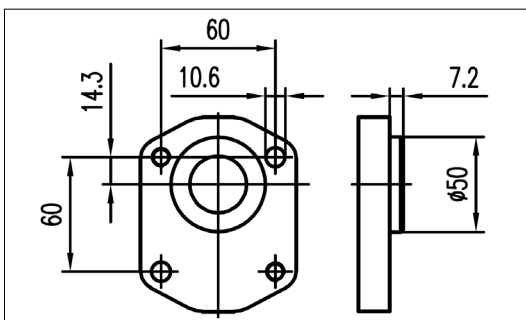
3



8

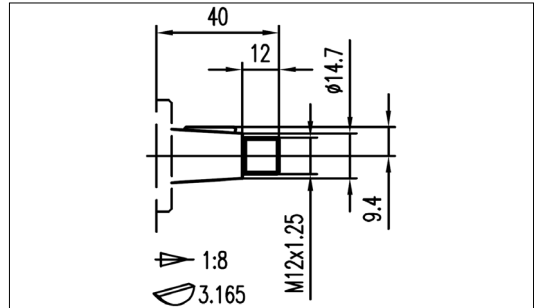


6



4

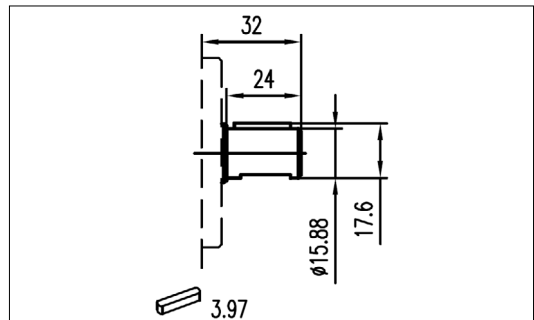
SHAFTS



3

Max. Torque

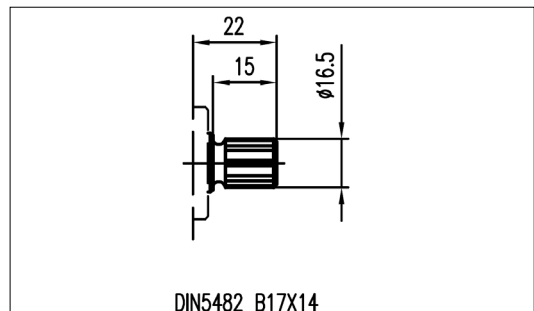
200 Nm



10

Max. Torque

140 Nm



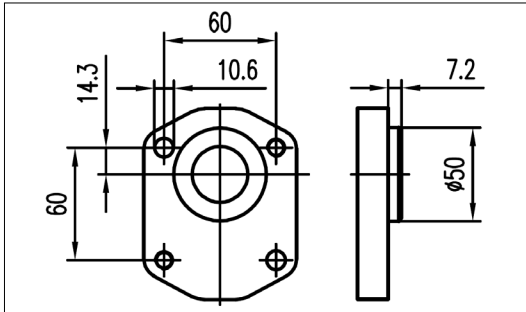
12

Max. Torque

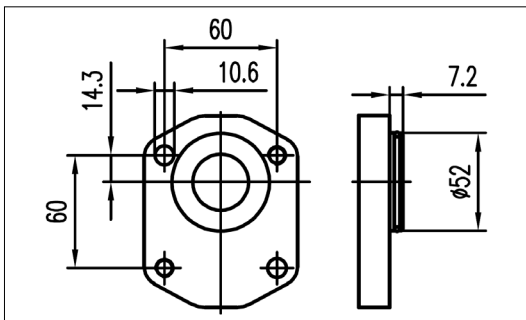
150 Nm



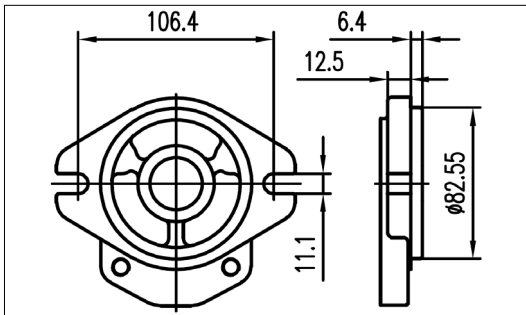
FRONT COVERS



9

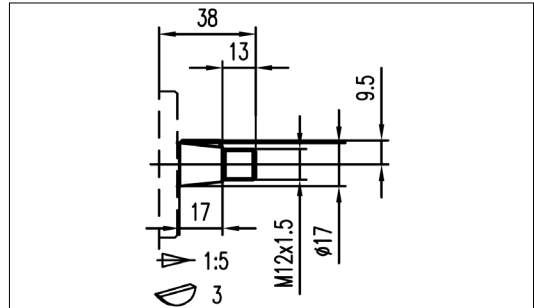


10



2

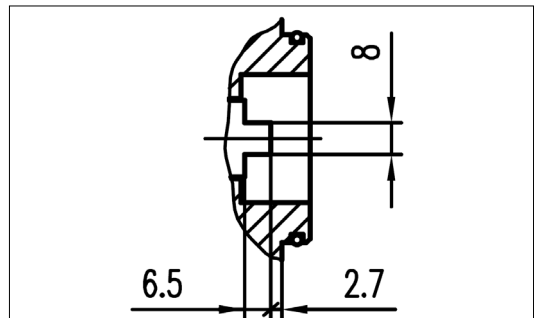
SHAFTS



8

Max. Torque

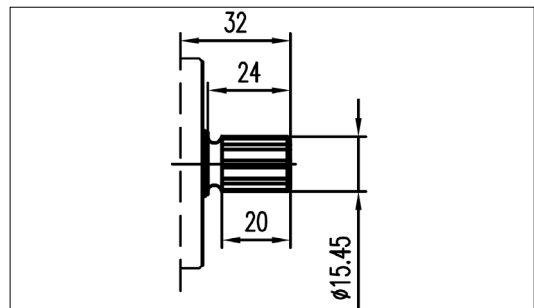
180 Nm



9

Max. Torque

100 Nm



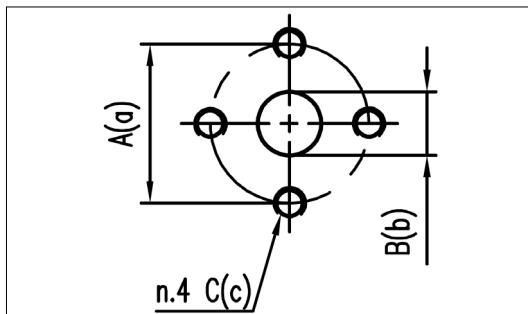
11

Max. Torque

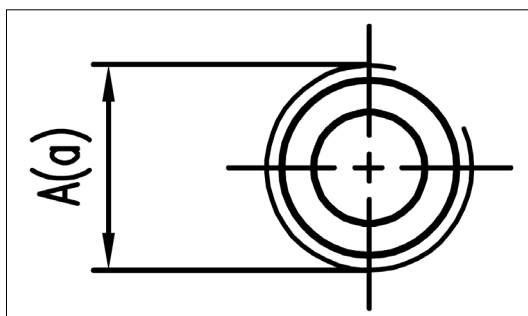
185 Nm



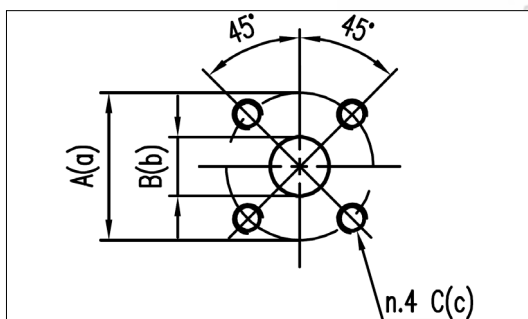
PORTS



PORTS CODE	INLET			OUTLET		
	A	B	C	a	b	c
3030	30	13	M6	30	13	M6
4030	40	20	M8	30	13	M6
4040	40	21	M8	40	19	M8



PORTS CODE	INLET	OUTLET
	A	a
1238	G1/2	G3/8
3412	G3/4	G1/2
1034	G1	G3/4



PORTS CODE	INLET			OUTLET		
	A	B	C	a	b	c
4035	40	20	M6	35	15	M6

