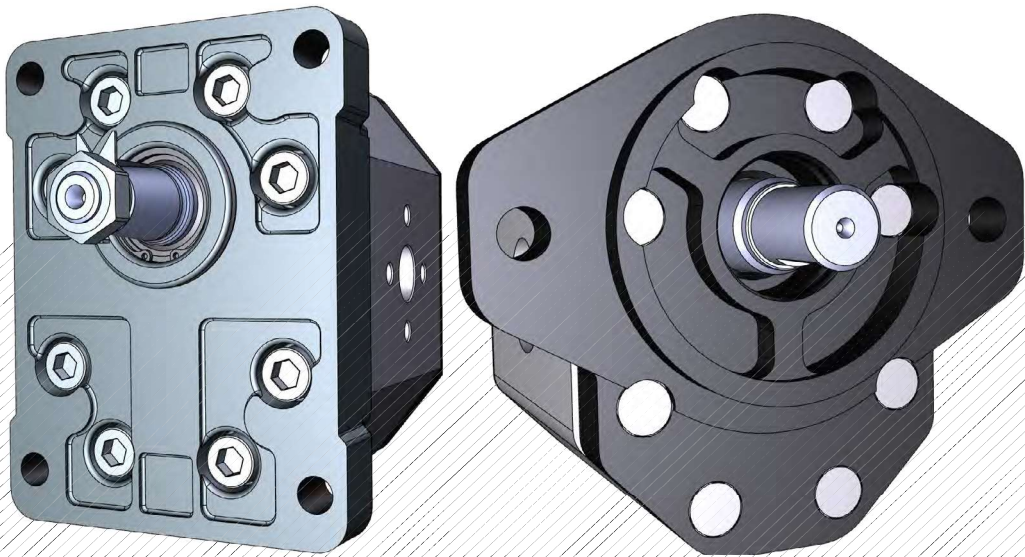


VNK3 GEAR PUMP
GROUP 3



HOW TO ORDER

Single pump	Group	Size	Shaft *	Flange *	Inlet port *	Outlet port *	Rotation
VNKB	3	25					C Clockwise
		28					A Counter clockwise
		30					
		32					
		36					
		38					
		40					
		44					
		50					
		52					
		55					
		63					
		71					
		80					
		90					
		100					

* see specifications of shafts, flanges and ports in pages 28, 29.

C	Clockwise
A	Counter clockwise

VNK3--2-5--*

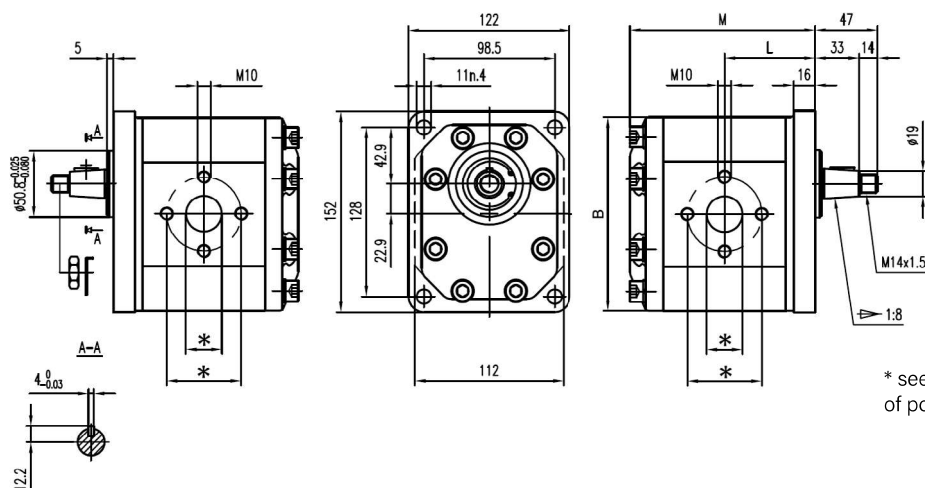
M10 thread depth 18, To mount the pump, n.8 M10 screws, with a torque wrench setting fixed at 47±3 Nm.

Shaft M 14x1.5 nut, with a torque wrench setting fixed at 80 Nm.



OUTLET

INLET



* see specifications of ports in page 29.

Type	Displacement cm³/rev	Max. Pressure			Max. Speed r/min	Min. Speed r/min	Dimensions		
		P1	P2	P3			M	L	B
							mm	mm	mm
VNKB3-25-2-5--*--*	25	260	290	300	3000	500	123	59,3	118
VNKB3-28-2-5--*--*	28	260	290	300	3000	500	126	60,8	118
VNKB3-30-2-5--*--*	30	250	280	300	3000	500	129	62	118
VNKB3-32-2-5--*--*	32	250	280	300	3000	500	131	63,3	118
VNKB3-36-2-5--*--*	36	250	280	300	2750	400	135	65,3	118
VNKB3-38-2-5--*--*	38	250	280	300	2750	400	137	66,3	118
VNKB3-40-2-5--*--*	40	250	280	300	2750	400	139	67,3	118
VNKB3-44-2-5--*--*	44	250	280	300	2750	400	144	69,5	118
VNKB3-50-2-5--*--*	50	220	240	260	3000	500	156	77	146
VNKB3-52-2-5--*--*	52	220	240	260	3000	500	158	78	146
VNKB3-55-2-5--*--*	55	220	240	260	2750	400	160	79	146
VNKB3-63-2-5--*--*	63	200	230	250	2750	400	168	83	146
VNKB3-71-2-5--*--*	71	180	200	220	2500	400	175	86	146
VNKB3-80-2-5--*--*	80	180	200	220	2500	400	189	96	146
VNKB3-90-2-5--*--*	90	180	200	220	2500	400	195	99	146
VNKB3-100-2-5--*--*	100	160	180	200	2500	400	201	102	146



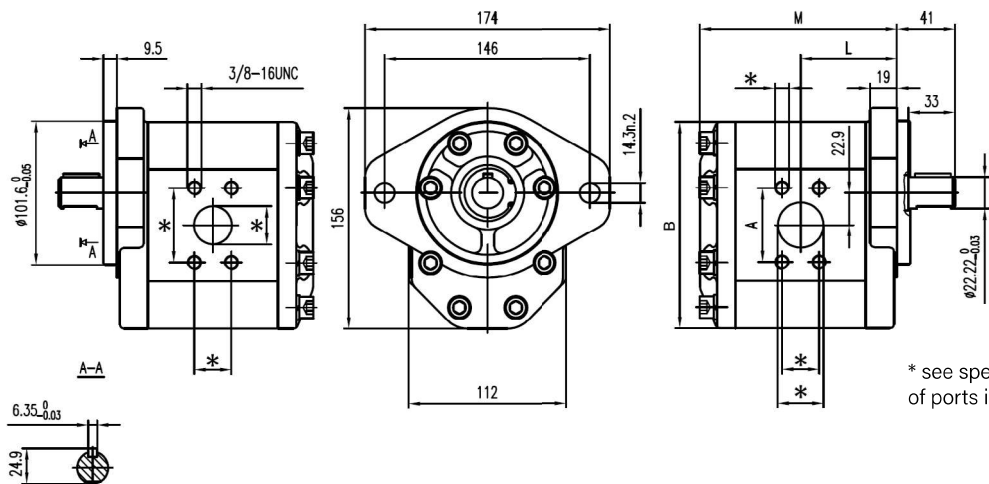
VNK3-*-7-*

To mount the pump, n.8 M10 screws, with a torque wrench setting fixed at 47 ± 3 Nm.



OUTLET

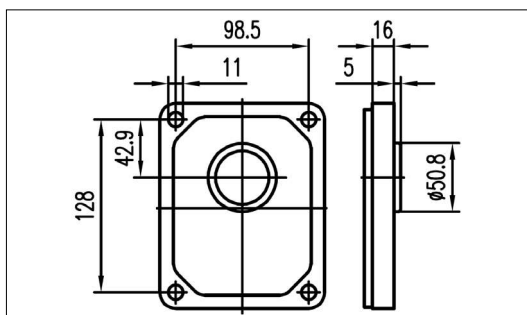
INLET



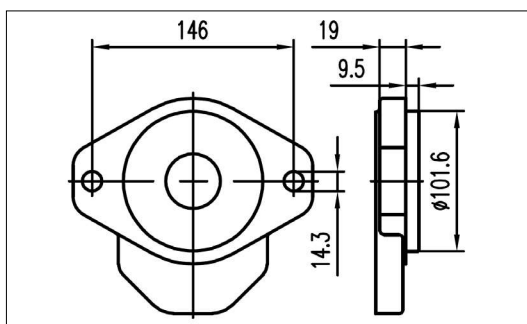
Type	Displacement cm ³ /rev	Max. Pressure			Max. Speed r/min	Min. Speed r/min	Dimensions		
		P1	P2	P3			M	L	B
VNKB3-25-*-7-*-*	25	260	290	300	3000	500	123	59,3	118
VNKB3-28-*-7-*-*	28	260	290	300	3000	500	126	60,8	118
VNKB3-30-*-7-*-*	30	250	280	300	3000	500	129	62	118
VNKB3-32-*-7-*-*	32	250	280	300	3000	500	131	63,3	118
VNKB3-36-*-7-*-*	36	250	280	300	2750	400	135	65,3	118
VNKB3-38-*-7-*-*	38	250	280	300	2750	400	137	66,3	118
VNKB3-40-*-7-*-*	40	250	280	300	2750	400	139	67,3	118
VNKB3-44-*-7-*-*	44	250	280	300	2750	400	144	69,5	118
VNKB3-50-*-7-*-*	50	220	240	260	3000	500	156	77	146
VNKB3-52-*-7-*-*	52	220	240	260	3000	500	158	78	146
VNKB3-55-*-7-*-*	55	220	240	260	2750	400	160	79	146
VNKB3-63-*-7-*-*	63	200	230	250	2750	400	168	83	146
VNKB3-71-*-7-*-*	71	180	200	220	2500	400	175	86	146
VNKB3-80-*-7-*-*	80	180	200	220	2500	400	189	96	146
VNKB3-90-*-7-*-*	90	180	200	220	2500	400	195	99	146
VNKB3-100-*-7-*-*	100	160	180	200	2500	400	201	102	146



FRONT COVERS

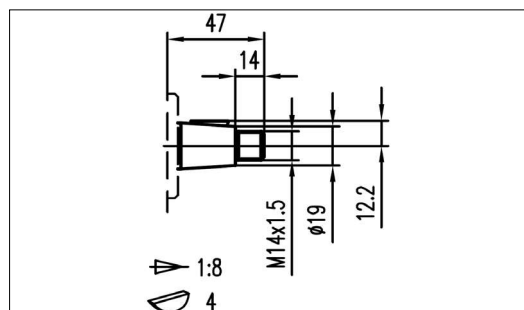


5



7

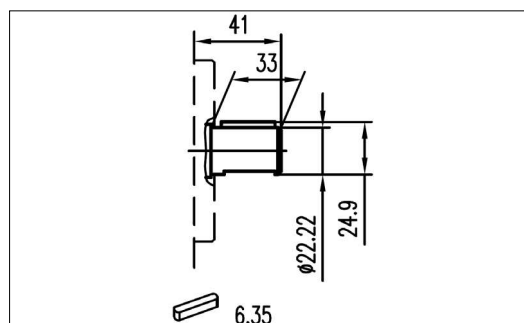
SHAFTS



2

Max. Torque

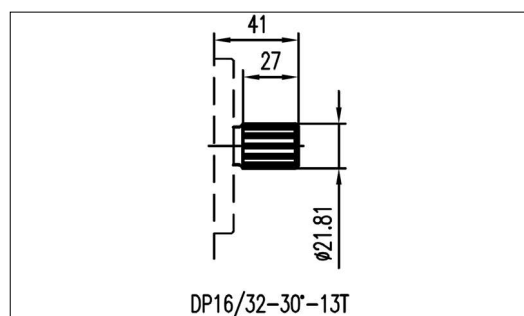
300 Nm



14

Max. Torque

400 Nm



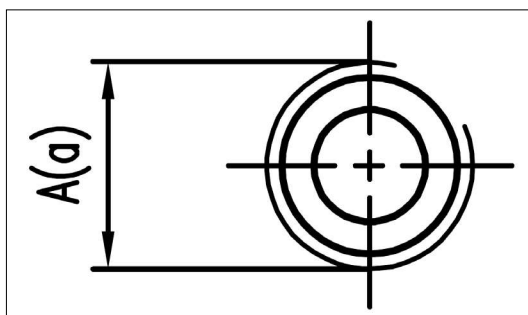
15

Max. Torque

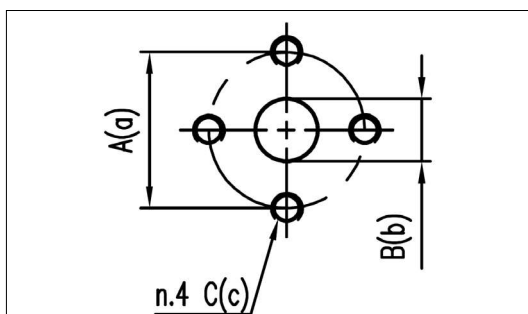
500 Nm



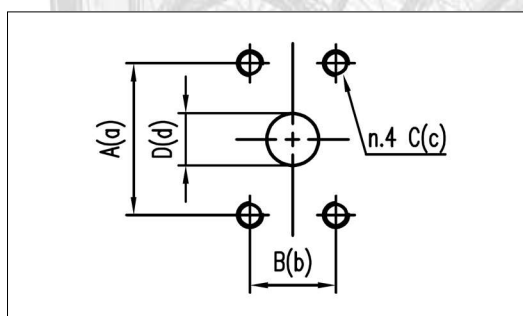
PORTS



PORTS CODE	INLET	OUTLET
	A	a
10 34	G1	G3/4
114 10	G1 1/4	G1
112 114	G1 1/2	G1 1/4



PORTS CODE	INLET			OUTLET		
	A	B	C	a	b	c
51 40	51	25	M10	40	18	M8
62 51	62	33	M10	51	27	M10
62 62	62	33	M10	62	33	M10



PORTS CODE	INLET				OUTLET			
	A	B	C	D	a	b	c	d
52 47	52.4	26.2	3/8-16UNC	27	47.6	22.2	3/8-16UNC	19
58 52	58.7	30.2	7/16-14UNC	33	52.4	26.2	3/8-16UNC	27

