

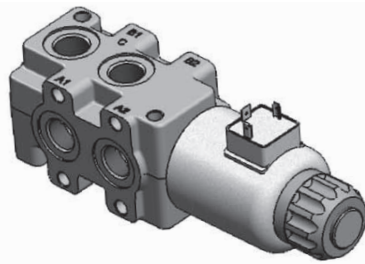
Technical parameters:

Nominal flow	50 l/min
Max operating pressure, with/without L	315 / 210 bar
Filtration	9 to NAS 1638
Hydraulic liquid	Mineral base oil
Viscosity	15-380 mm ² /s
Fluid temperature	-20C to 70C
Ambient temperatura	-30C...+50C
Supply voltaje, V	12DC/24DC
Power, W	39;29
Switching frequency, 1/h	15 000
Duty cycle	100%
Modification/Sections	up to 5

DESCRIPTION: DVS Selector valve has been designed to meet the demand of progressive machine manufacturers for versatile, cost effective, reliable circuit selector. The valve body is produced by cast iron EN-GJL300 alloy and it is machined using high precision, advanced, contemporary techniques. The advanced design of the valve spool ensures that fast spool switching can take place under any conditions without the use of a separate drain line.

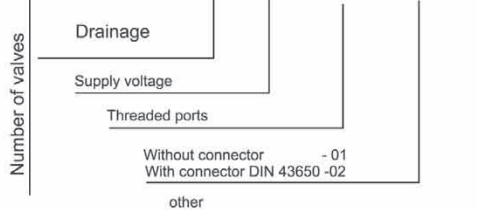
CONSTRUCTION: DVS Selector valve stackable 6 port/2way change over valves are designed to be used when extra circuits are to be operated from one control lever on machines such as fork lift trucks, agricultural front end loader, telescopic handlers, and in transmission circuits. SVV can be stacked up to 3 valves allowing for the diverting of flow 2,3 or 4 directions depending on the combination chosen.

MOUNTING: The distributor is fixed with two bolts M6. DVS valve bank can be optionally equipped with housing, containing relief valve, on the outlet end of the valve, protecting the motor or cylinder operated by the B ports against excessive pressure.

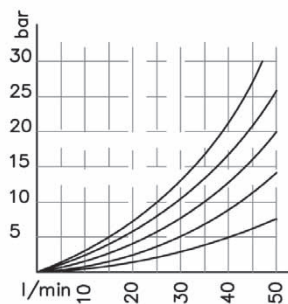
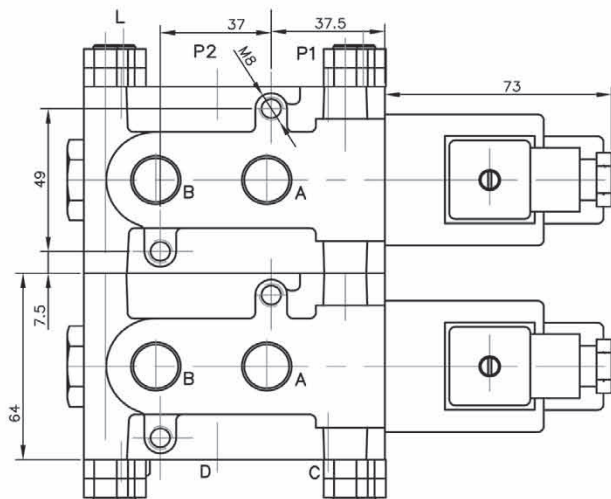
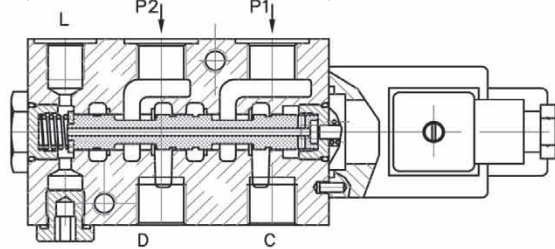
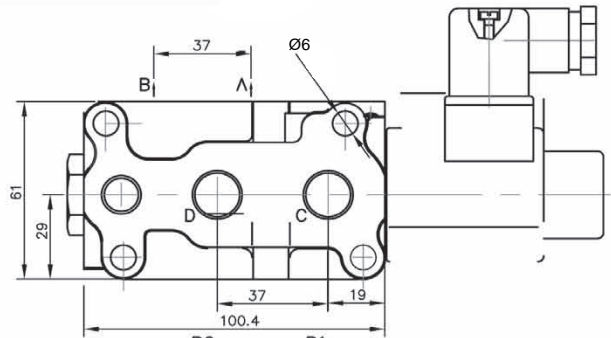
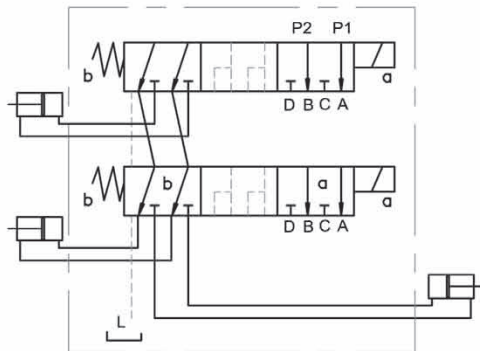


Ordering Code

2DVS6 - 6/2 - L - 12DC - G38 - ... -



	supply voltage
code	Threaded connections
G38	P1, P2, A, B, C, D - G3/8 ; L = G1/4
M18	P1, P2, A, B, C, D - M18x1.5 ; L = M14x1.5
SAE	P1, P2, A, B, C, D - SAE3/8 ; L = SAE4



max P	with L	bar	315	supply voltage	V	12 ; 24 DC
max P	without L	bar	210	power	W	36, 29
flow rate	max	l/min	50	switching frequency	1/h	15 000
oil temperature		°C	-20+70	ambient temperature		to 50°C
viscosity		mm/s	15-380	coil temperature		to 180°C
filtration	NAS1638		9	duty cycle		100%