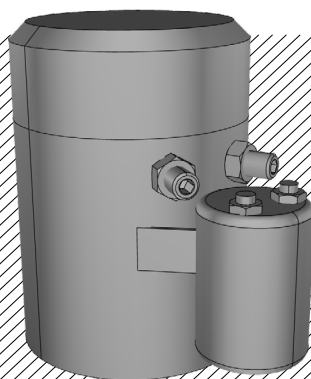
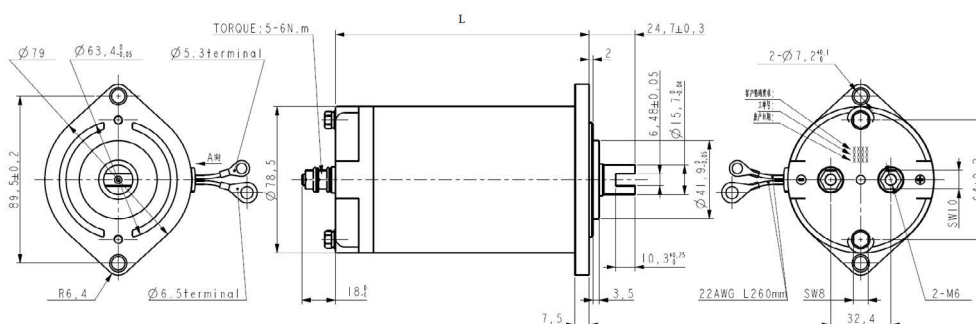


ELECTRIC MOTORS



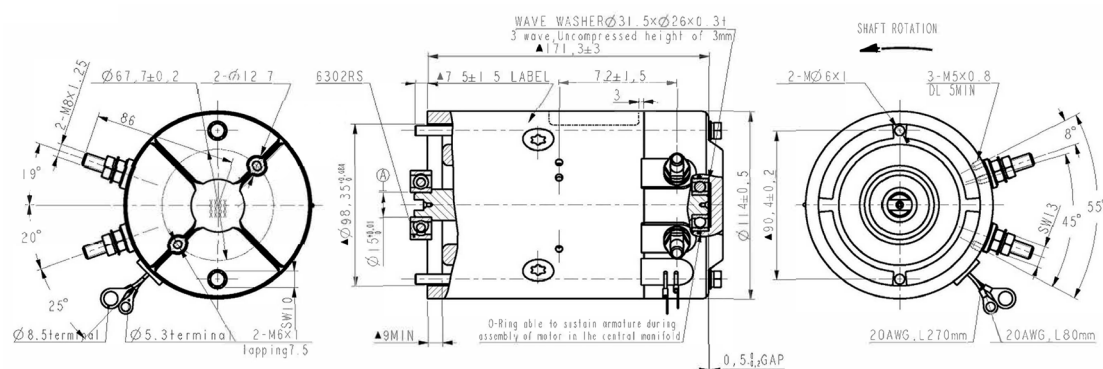
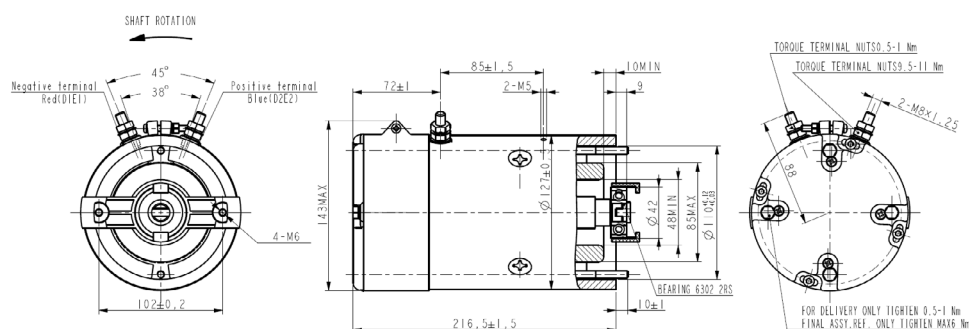
ELECTRIC DC MOTOR WITH OR WITHOUT RELAY

T-80



Reference	Description	Nominal Duty cycle	Nominal Speed (rpm)	Rotation	Nominal Current	L (mm)
VNKPP040100	Motor T-80 24DC 500W w/o Relay	S2 = 2,5 min S3 = 10% ED	2300	CW-CCW	150A	144
VNKPP040102	Motor T-80 12DC 500W w/ Relay	S2 = 2,5 min S3 = 10% ED	2300	CW-CCW	150A	136
VNKPP040103	Motor T-80 12DC 800W w/ Relay	S2 = 3 min S3 = 10% ED	3000	CW-CCW	150A	138
VNKPP040104	Motor T-80 24DC 800W w/ Relay	S2 = 3 min S3 = 10% ED	3400	CW-CCW	150A	136



T-112

T-125


Reference	Description	Nominal Duty cycle	Nominal Speed (rpm)	Rotation	Nominal Current	L (mm)
VNKPP040105	Motor T112 12DC 1600W w/Relay	S2 = 5 min S3 = 20% ED	2800	CCW	150A	179.8
VNKPP040106	Motor T112 24DC 2200W w/Relay	S2 = 3,5 min S3 = 15% ED	2400	CCW	150A	154.3
VNKPP040107	Motor T112 24DC 2200W w/Relay	S2 = 8 min S3 = 20% ED	2900	CCW	150A	179.8
VNKPP040109	Motor T112 12DC 2100W w/Relay	S2 = 2,5 min S3 = 10% ED	2400	CCW	150A	171.3
VNKPP040110	Motor T125 24DC 3000W w/o Relay	S2 = 4 min S3 = 8% ED	2850	CCW	150A	216.5

