

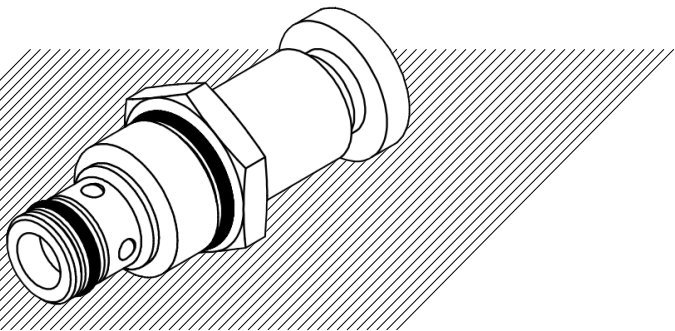
MANUAL VALVES

VNKPP050501

Manual Emergency Valves

The manual emergency valves open the passage of oil in a hydraulic circuit by a manual command (blocked flow in both directions).

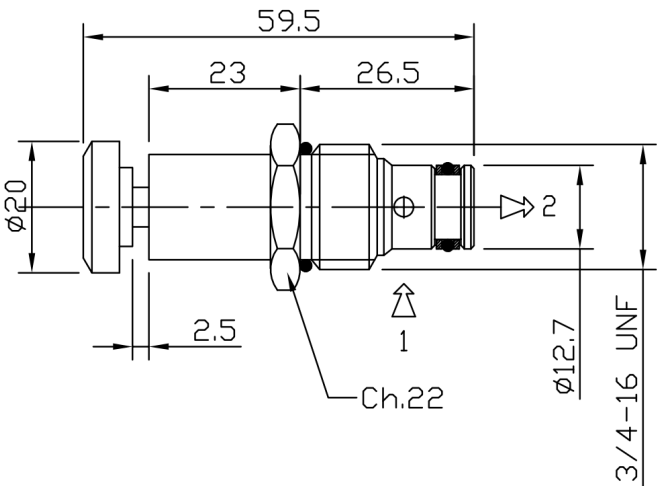
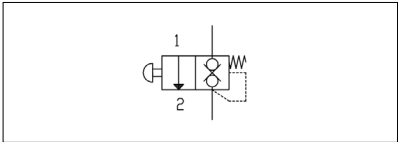
ASS. CODE
4



MAIN FEATURES

Max pressure	320 bar	
Max flow	25 l/min	1→2
Weight	0,15 kg	

SYMBOL



VNKPP050502

ASS. CODE
1

