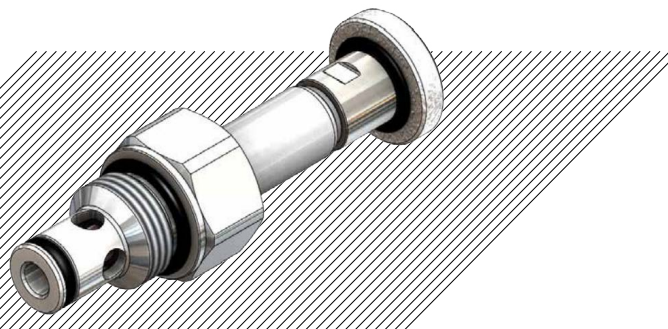


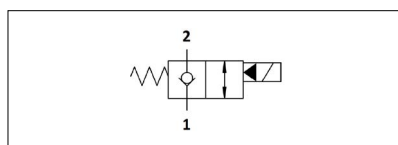
SOLENOIDS 2/2

GROUPS K0, K1

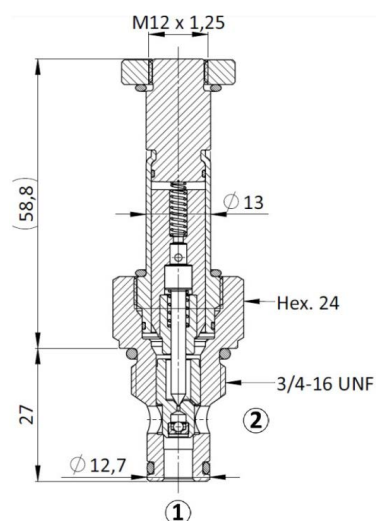
N.O. ASS. CODE	N.O. + Emergency ASS. CODE
7	10



SYMBOL



SAE Cartridge - 350 bar
 NO Single Lock Pilot Operated
 Poppet Type

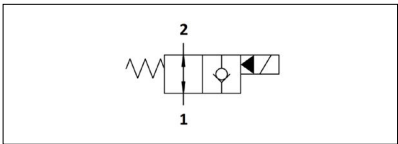


GROUPS K0, K1

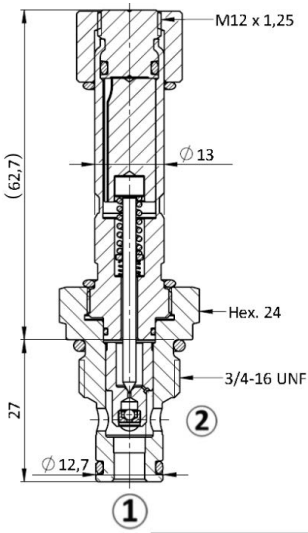
N.C.	N.C. + Emergency
ASS. CODE	ASS. CODE
8	9




SYMBOL



SAE Cartridge - 350 bar
NC Single Lock Pilot Operated
Poppet Type



SOLENOIDS 2/2 GROUPS K0, K1				
Reference	Type	Q (l/m)	Max P (bar)	
VNKPP050601	N.C.	40	350	3/4 UNF
VNKPP050602	N.O.	40	350	3/4 UNF
VNKPP050603	N.O. + Emergency	40	350	3/4 UNF
VNKPP050604	N.C. + Emergency	40	350	3/4 UNF

