



Product Description

VSBL Series: ISO 7241-1B Interchange

1. Body Size: 1/4", 3/8", 1/2", 3/4" 1".
2. Valve: Poppet Type
3. Body materials: Brass for the main parts.
4. Seals materials: Standard in viton FKM.
5. Working temperature: -25° C + 200° C. Others on request
6. Back-up Ring: Teflon
7. Threads available: BSPP female threads.

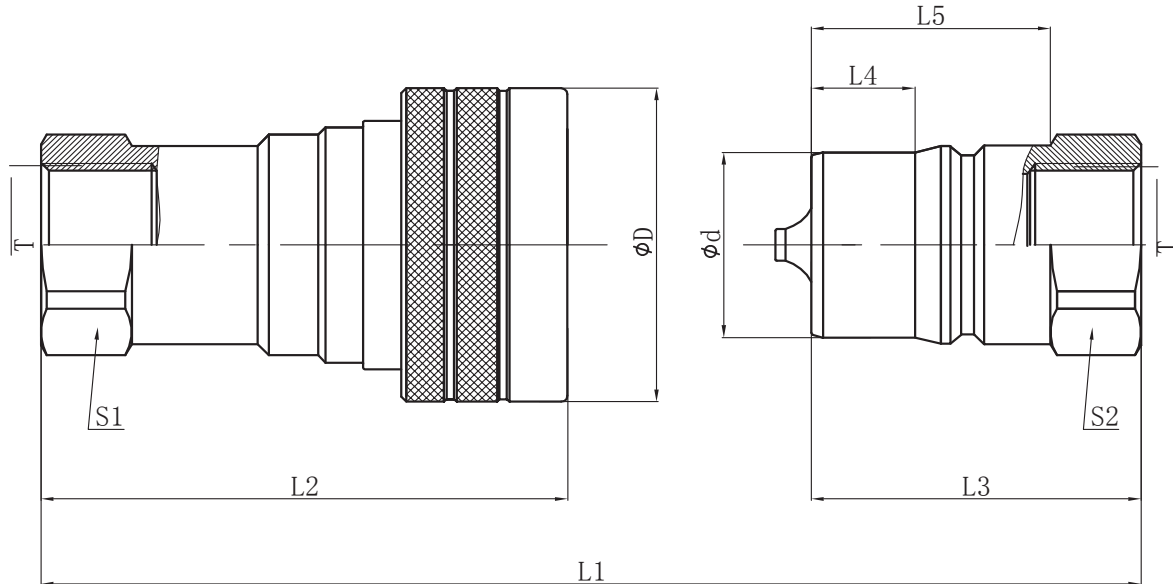
Interchange Standard Parker 60 series, Faster HNV, Dnp PBVM, Stucchi IRBO.

Features

1. Poppet valves are mated in stainless steel perch that maintains valve alignment and prevents flow checking.
2. Both the coupling sleeve and the nipple's body are hardened to make the VSBL series couplings resistant to damage from brinelling and mechanical shock.
3. The durable ball-locking mechanism ensures a reliable connection every time.
4. VSBL series couplings interchange with couplings meeting ISO 7241-1, Series B.

Applications

Versatile VSBL are used across the spectrum of hydraulic applications. Their general solidity permits the strenuous applications in aeronautics, electronics and automotive industry.



Type	ISO Ø	L1	L2	L3	ØD	S1	S2	T
VSBL14	6,3	72,5	57	36	27,5	19	19	BSPP 1/4
VSBL38	10	80	65	40	35	22	22	BSPP 3/8
VSBL12	12,5	94,5	74	46,5	44	27	27	BSPP 1/2
VSBL34	20	112,5	89	57,5	52	34	34	BSPP 3/4
VSBL100	25	132,5	106	65,5	60	41	41	BSPP 1"

Technical characteristics

Type	ISO Ø	Q.	Max. Q	Max. Operating Pressure			Burst Pressure		
				Coupled	Male	Female	Coupled	Male	Female
	mm	l/min	l/min	Bar	Bar	Bar	Bar	Bar	Bar
VSBL14	6,3	12	20	60	60	60	1270	800	840
VSBL38	10	23	46	60	60	60	950	800	870
VSBL12	12,5	45	90	60	60	60	1020	720	910
VSBL34	20	106	148	60	60	60	810	550	680
VSBL100	25	189	200	60	60	60	600	590	700