

POWER PACKS



HYDRAULIC POWER PACK

Vincke is fully dedicated to hydraulic power pack components and system design, combining continuous research, development, and innovation with a strong focus on quality, efficiency, and customer responsiveness. We develop custom-made solutions, tailored to the specific requirements of each application.

Our organization is built around agile manufacturing processes and supported by automated warehouses, enabling fast response times, optimized logistics, and consistent product availability. Thanks to this flexibility, we are able to manufacture pre-series within 24–48 hours, supporting our customers from early design validation through to series production.

Vincke is highly competitive both in low-volume production and in scheduled series, always maintaining high technical standards, precision, and cost efficiency. Our production and quality management system is ISO 9001 certified, ensuring reliable processes and consistent quality across all projects.

Our workshop features 1,500 m² dedicated exclusively to production and is equipped with the necessary testing and validation equipment to guarantee the reliability and performance of every product we manufacture. With strong know-how in hydraulic components as well as system and application design, Vincke offers a flexible supply policy: from loose components to kits, or fully assembled and tested power packs.

Through innovation, technical expertise, and close collaboration with our customers, we deliver dependable, efficient, and high-quality hydraulic solutions.

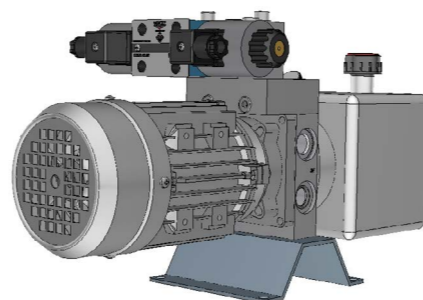
GENERAL APPLICATION

Installation position	No specific limitation, provided that the suction filters is correctly positioned.
Ambient Temperature	-15 °C to +50 °C
Hydraulic oil	Hydraulic oil, either mineral or synthetic based, compliant with ISO 6743/4 or DIN 51519. Viscosity range: 15-100mm ² /s according to ISO 3448 (recommended viscosity: 22-46mm ² /s)
Oil temperature	-10°C to + 70°C
Contamination level	Oil cleanliness must exceed class 18/4 according to ISO 4406.
First Start	<ol style="list-style-type: none"> 1. Secure the power unit using the mounting legs (9) or the motor brackets to the intended application, ensuring it is firmly fixed and vibrations are minimized as much as possible. 2. Connect the power unit to the system using either flexible or rigid connections, making sure not to force any components and respecting their nominal dimensions. 3. Fill the unit's tank with hydraulic oil through the filler cap (4). 4. Adjust the relief valve (6) by loosening the lock nut and turning the adjustment screw counterclockwise until it can be moved smoothly by hand (do not fully unscrew it). 5. Open the pressure gauge valve (13) by gently turning the knob counterclockwise. 6. Connect the electric motor (2) to the voltage and current specified on its nameplate. This task must be carried out by qualified personnel in accordance with applicable safety regulations. 7. Briefly power the motor to verify that its rotation direction matches the arrow indicated on the motor housing. Incorrect rotation may damage the pump seal or the pump itself and affect proper operation. <ul style="list-style-type: none"> • Once the correct rotation has been confirmed, start the unit and operate the valves as required. Adjust the maximum pressure screw (6) until the pressure gauge shows the desired working pressure. • Repeatedly actuate valves (12 or 14) to remove air from the hydraulic circuit. • With the motor switched off, check the oil level and top it up if necessary to the tank's maximum capacity. For filling or level checking, the cylinders must be fully retracted.

HYDRAULIC POWER PACK FAMILIES

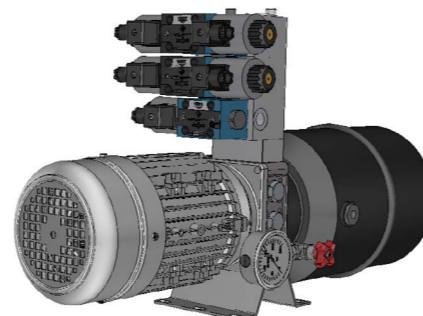
● AC & DC MICRO HYDRAULIC POWER PACK

- Highly compact
- Flow: 0.19cc to 2cc
- Pressure up to 250 bar
- DC motors up to 2.2kW
- AC motors up to frame 80
- Single & double acting & reversible circuits



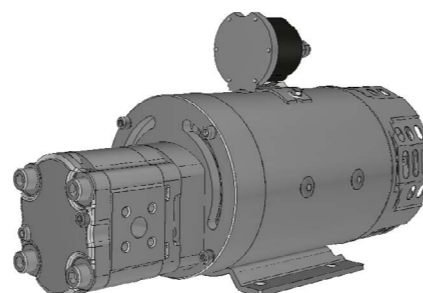
● AC & DC COMPACT HYDRAULIC POWER PACK

- 0.8 to 13cc
- Low pressure drop
- Pressure up to 250 bar
- DC motors up to 4 kW
- AC motors up to 5.5kW
- Single & double acting



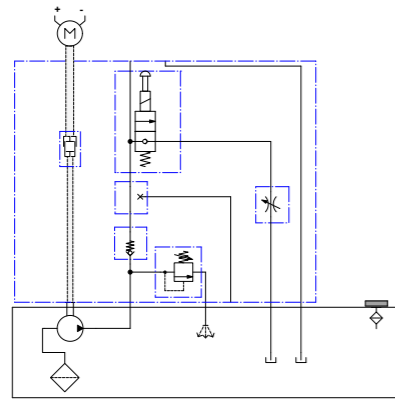
● DC ELECTROPUMPS

- 0.5 ~ 4 kW, 12V e 24V 48 DC motors (same used in Compact and Micro power packs)
- Forced ventilation for high cycle times
- 0.19 ~ 12cc/rev gear pumps (same used in Compact and Micro power packs. Available also lateral ports pumps)
- Option: starter switch, thermal protection, foot mounting support
- AC8 0.12 ~ 5.5 kW

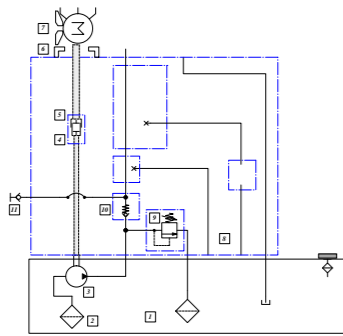


INDEX

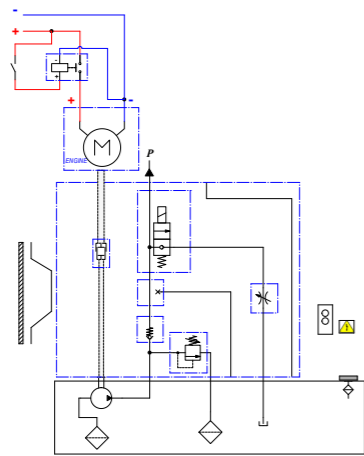
● PALLETS TRUCKS



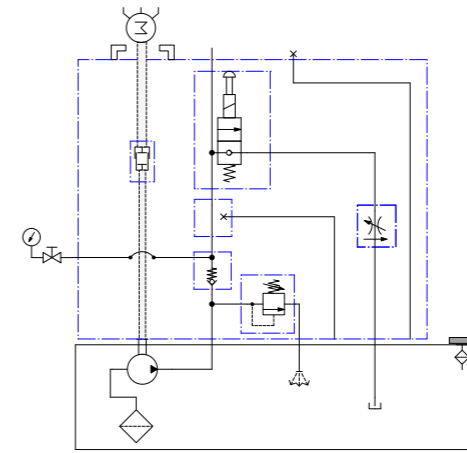
● TIPPING CONTAINER



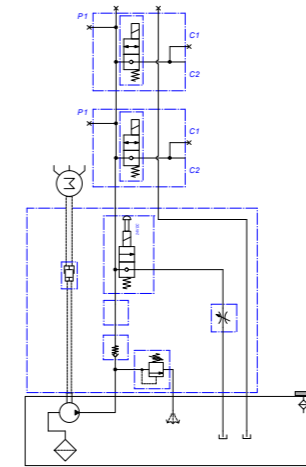
● DUMP TRAILER



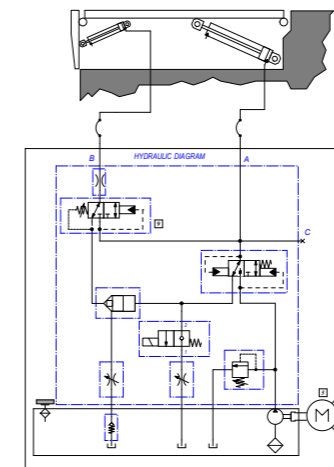
● LIFTING PLATFORM



● LARGE SCISSOR LIFT



● DOCKLEVELLER

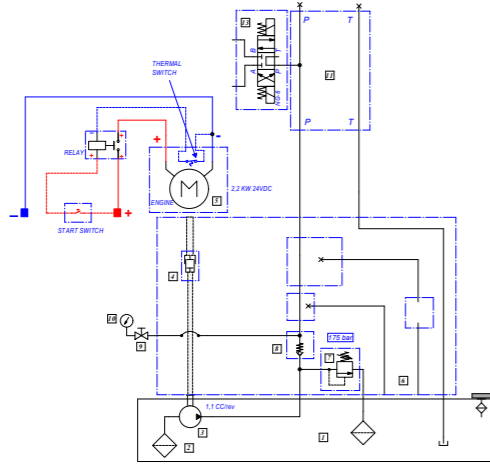


APPLICATIONS

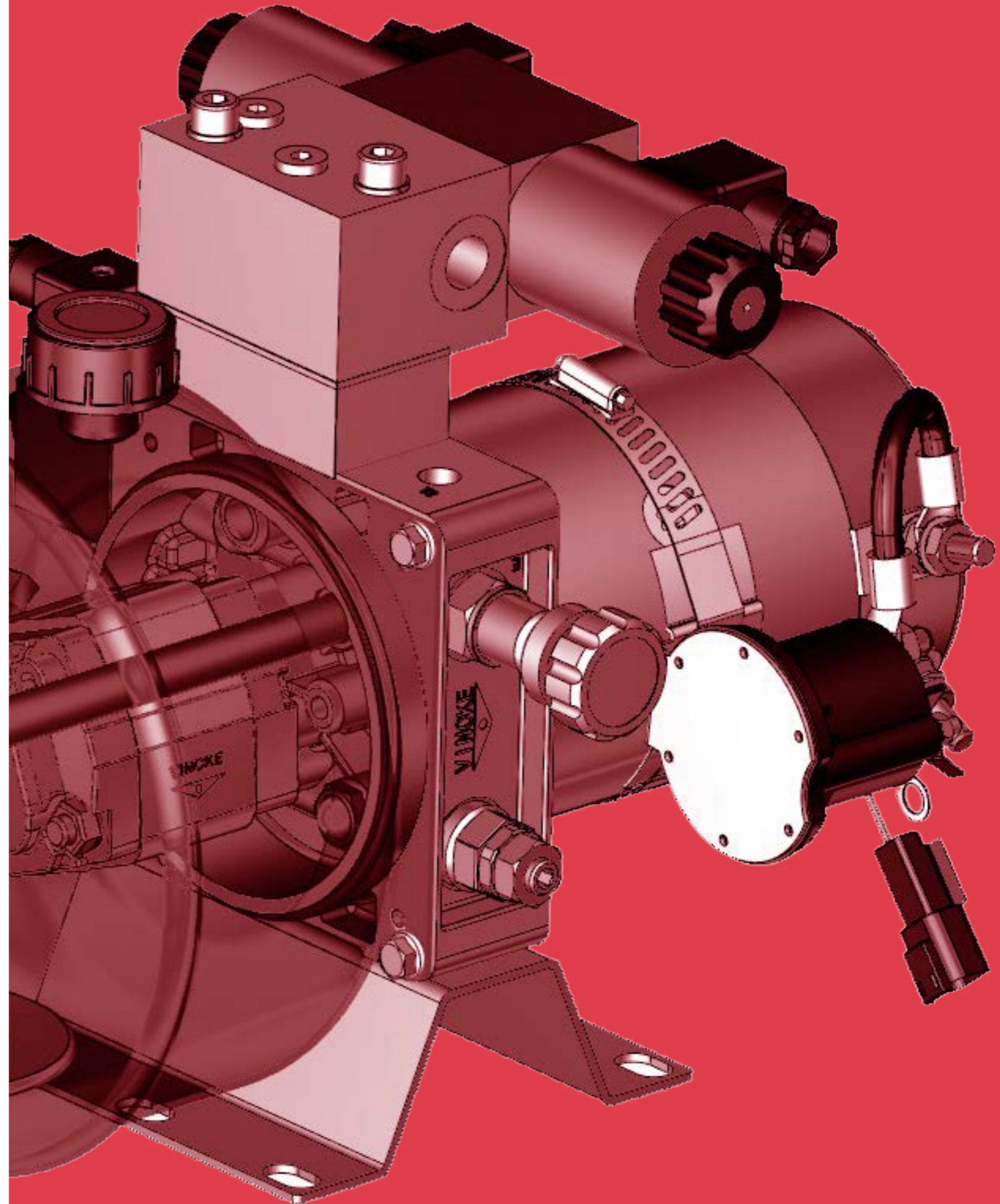
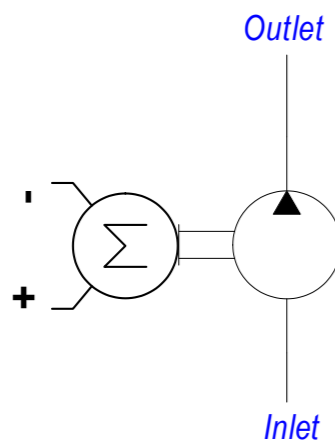
● BOLLARD



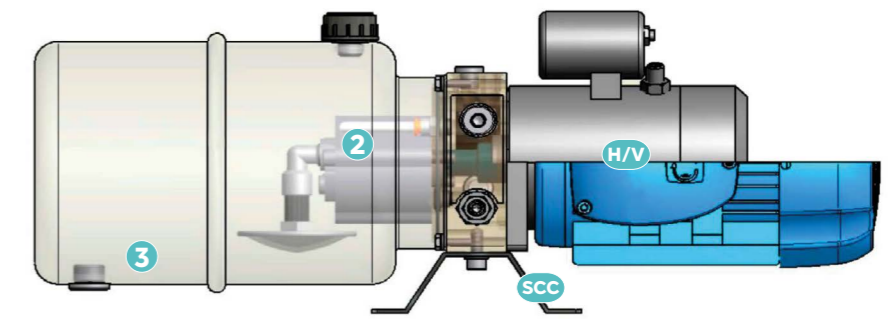
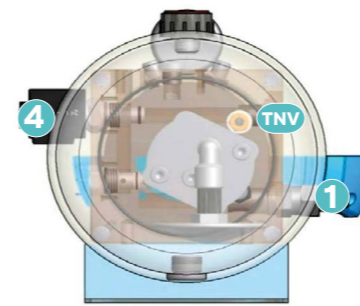
● SNOW PLOW



● AERIAL WORK VEHICLE



POWER UNITS SINGLE ACTION K0



K0 SE - **S/P** **H/V** - **MOTOR** - **2P-IE1** - **e/v** - **VOLTAJE** - **TNV** - **MONOMETER** - **SCC** →

PRESSURE RANGE		cm3	TANK		MOTOR		2P-IE1		e/v		VOLTAJE		MONOMETER		SCC
N	plug	0.19	Horizontal		DC		2P IE1		NC		12 DC	FT1 UPRIGHT		OPTIONAL FOOT MOUNTING SUPPORT	
O	5...40	0.25	1		C01	500W 12DC Ø80	2P IE3		NC-E		24 DC	FT2 ELBOW			
A	30...100	0.38	1.5		C02	500W 24DC Ø80	2P IE1 UL		NA		24 AC	M*** ***=RANG		FLOW CONTROL VALVE	
B	50...210	0.5	2.5		C03	800W 12DC Ø80	2P IE3 UL		NA-E		24 RAC	Example: M250; 0-25bar			
C	100...350	0.65	4		C04	800W 24DC Ø80	4P IE1		NC-D		110 RAC	PP Pressure Point			
D	55...180	0.75	X/H W/o Tank		C05	1600W 12DC Ø112	4P IE3		NA-D		220 RAC	PC Plastic Cover			
E	120...300	0.88	Vertical		C06	1600W 12DC Ø112 Fan.	4P IE1 UL		NC-PM			RF Return Filter			
		1.00	1		C07	1600W 24DC Ø112	4P IE3 UL								
		1.25	1.5		C08	2100W 12DC Ø112									
		1.5	2.5		C09	2100W 12DC Ø112									
		1.75	4		C10	2100W 12DC Ø112Fan.									
		2	X/V W/o Tank		C11	2200W 24DC Ø112Fan.									
					C12	2000W 48DC Ø112									
					C13	3000W 24DC Ø125									
					C14	2000W 12DC Ø125 Fan.									
					C15	3000W 12DC Ø125Fan.									
					C16	3000W 24DC Ø125Fan.									

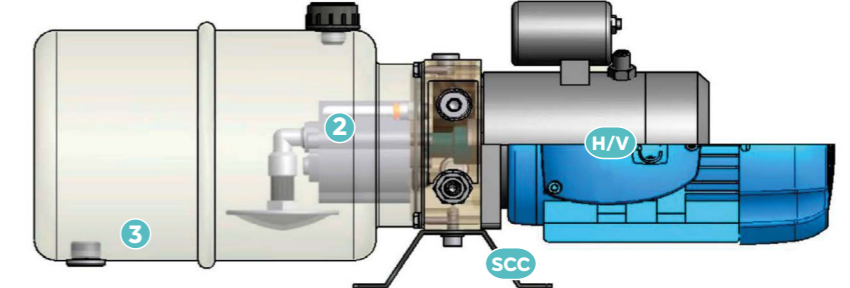
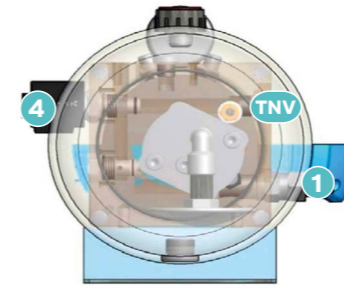
MONOPHASE (M1-M4)
THREE-PHASE (T1-T5)

EXAMPLE

K1 - SE - B - 2 - 1 L - H - T4 - NC-E 12DC - TNV - SCC

For more options (hand valves, additional hand pumps, flow control valves pressure gauges, pressure connections, pressure switches, etc...) please contact our sales department.

POWER UNITS SINGLE ACTION K1



K1 - **SE** - **S/P** - **H/V** - **MOTOR** - **TNV** - **SCC**

PRESSURE RANGE		cm ³			TANK	
N	plug	P	S	H	Horizontal	
O	5...40	0.8	1.0	2.3	Plastic	Steel
A	30...100	1.1	1.2	2.7	1.5	1.5
B	50...210	1.3	1.6	3.2	2.5	2.5
C	100...350	1.6	2.1	3.8	4	5
D	55...180	1.8	2.5	4.3	5	8
E	120...300	2.1	3.2	5.0	7	10
		2.7	3.5	6.3	8	12
		3.2	4.2	7.8	10	18
		3.7	5.0	9.5	12	24
		4.2	6.2	11		30
		4.8	7.0		X/H	W/o Tank
		5.8	8.0		Vertical	
		7.0	10		Plastic	Steel
		8.0			1.5	1.5
		9.8			2.5	2.5
					4	5
					5	7
					7	8
					8	10
					10	12
					12	15
						20
						30
						55
					X/V	W/o tank

MOTOR	
DC	AC
C01	M1
C02	M2
C03	M3
C04	M4
C05	M5
C06	M6
C07	M7
C08	M8
C09	M9
C10	T1
C11	T2
C12	T3
C13	T4
C14	T5
C15	T6
C16	T7
C17	T8
C18	T9
C19	T10
S Mx/Tx	W/o Motor

MONOPHASE

THREE-PHASE

e/v	
NC	
NC-E	
NA	
NA-E	
NC-D	
NC-PM	

VOLTAJE	
2P-IE1	12 DC
2P IE3	24 DC
2P IE1 UL	24 AC
2P IE3 UL	24 RAC
4P IE1	110 RAC
4P IE3	220 RAC
4P IE1 UL	
4P IE3 UL	

MONOMETER	
FT1	UPRIGHT
FT2	ELBOW
M***	***=RANG
	Example: M250; 0-25bar
PP	Pressure Point
PC	Plastic Cover
RF	Return Filter

FLOW CONTROL VALVE

OPTIONAL FOOT MOUNTING SUPPORT

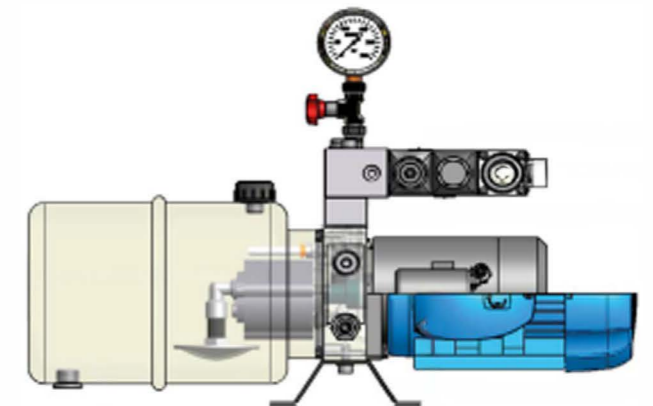
EXAMPLE

K1 - SE - B - 2.6 - 12 L - H - T4 - NC - EE 12DC - STCB - SCC

For more options (hand valves, additional hand pumps, flow, control valves pressure connections, pressure switches, etc...) please contact our sales department.

S	Splined
H	Helical

POWER UNITS DOUBLE ACTION K1



K1 DE **S/P H/V** **SCC**

PRESSURE RANGE		cm3			TANK		MOTOR				SUBPLATE		NG-6 CETOP VALVES		VOLTAJE		MONOMETER	
N	plug	P	S	H	Horizontal		DC		AC		PT	P-T	D	FW	12 DC		OPTIONAL FOOT MOUNTING SUPPORT	
O	5...40	0.8	1.0	2.3	Plastic	Steel	C01	500W 12DC Ø80	M1	0.33CV Mon-4P	1	Serie	G	FA	24 DC			
A	30...100	1.1	1.2	2.7	1.5	1.5	C02	500W 24DC Ø80	M2	0.5CV Mon-4P	2	Parallel	E	FB	24 AC			
B	50...210	1.3	1.6	3.2	2.5	2.5	C03	800W 12DC Ø80	M3	0.75CV Mon-4P	3	90°	H	PW	24 RAC			
C	100...350	1.6	2.1	3.8	4	5	C04	800W 24DC Ø80	M4	1CV Mon-4P	4	S/E	J	PA	110 RAC			
D	55...180	1.8	2.5	4.3	5	8	C05	1600W 12DC Ø112	M5	1.5CV Mon-4P	e/v		HA	LB	220 RAC			
E	120...300	2.1	3.2	5.0	7	10	C06	1600W 12DC Ø112 Fan.	M6	2CV Mon-4P	NA	NA-E	X	LW	MONOMETER			
		2.7	3.5	6.3		30	C07	1600W 24DC Ø112	M7	3CV Mon-4P	NC-PM		LA	FT1			UPRIGHT	
		3.2	4.2	7.8	X/H	W/o Tank	C08	2100W 12DC Ø112	M8	4CV Mon-4P			LB	FT2			ELBOW	
		3.7	5.0	9.5	Vertical		C09	2100W 12DC Ø112	M9	5CV Mon-4P			RP	M***			***=RANG	
		4.2	6.2	11	Plastic	Steel	C10	2100W 12DC Ø112 Fan.	T1	0.33CV Trif-4P			RA				Example: M250; 0-25bar	
		4.8	7.0		1.5	1.5	C11	2200W 24DC Ø112 Fan.	T2	0.5CV Trif-4P			RB	PP			Pressure Point	
		5.8	8.0		2.5	2.5	C12	2000W 48DC Ø112	T3	0.75CV Trif-4P			OW	PC			Plastic Cover	
		7.0	10		4	5	C13	3000W 24DC Ø125	T4	1CV Trif-4P			OA	RF			Return Filter	
		8.0			5	7	C14	2000W 12DC Ø125 Fan.	T5	1.5CV Trif-4P			OB					
		9.8			7	8	C15	3000W 12DC Ø125 Fan.	T6	2CV Trif-4P								
					8	10	C16	3000W 24DC Ø125 Fan.	T7	3CV Trif-4P								
					10	12	C17	2500W 12DC Ø151 Fan.	T8	4CV Trif-4P								
					12	15	C18	3000W 24DC Ø151 Fan.	T9	5CV Trif-4P								
						20	C19	4000W 24DC Ø141 Fan.	T10	7.5CV Trif-4P								
						30			S Mx/Tx	W/o Motor								
						55												
					X/V	W/o tank												

S	Splined
H	Helical

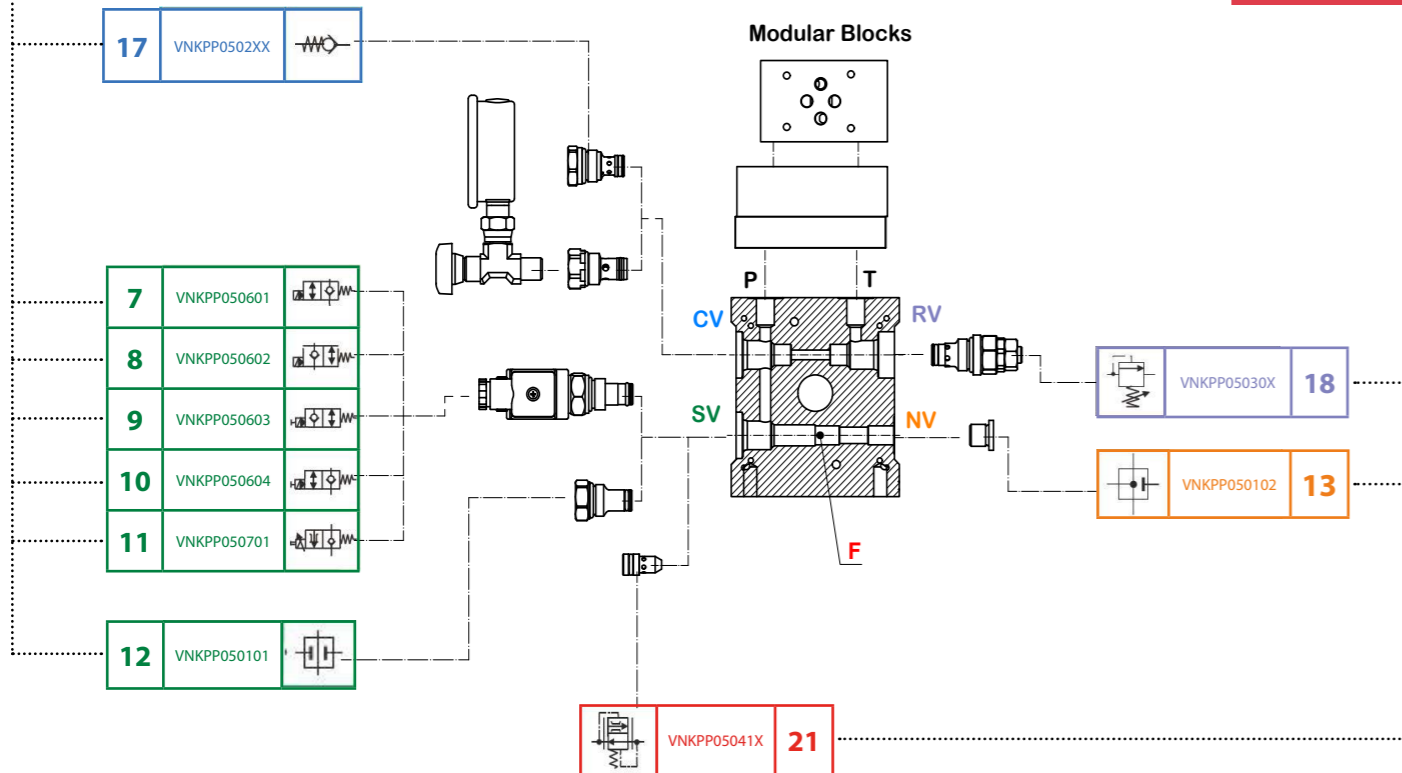
EXAMPLE

K1 - DE - B - 2.6 - 12 L - H - T6 - NA-E 12DC - 1 - FA - SCC

For more options (hand valves, additional hand pumps, flow control valves pressure gauges, pressure connections, pressure switches, etc...) please contact our sales department.

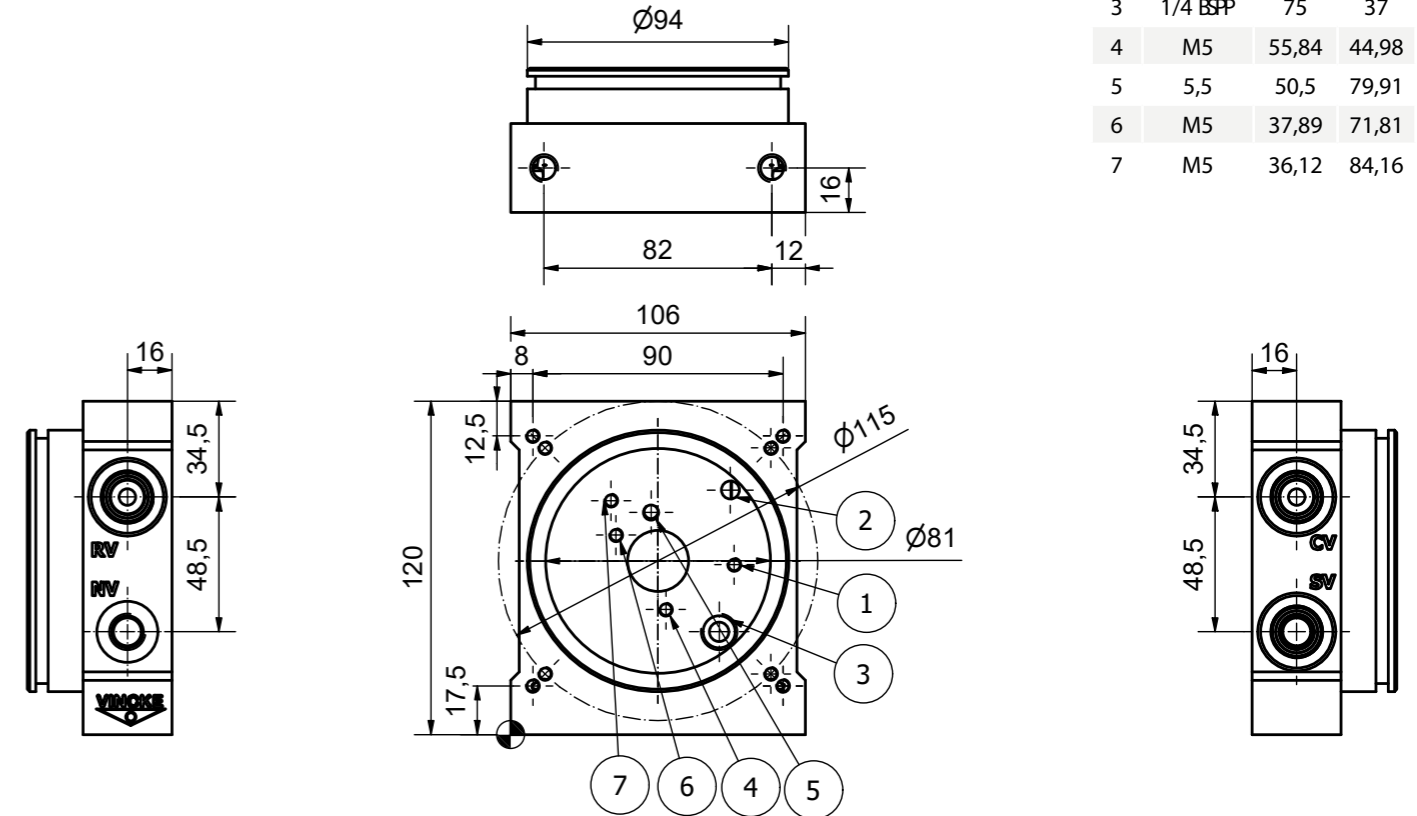
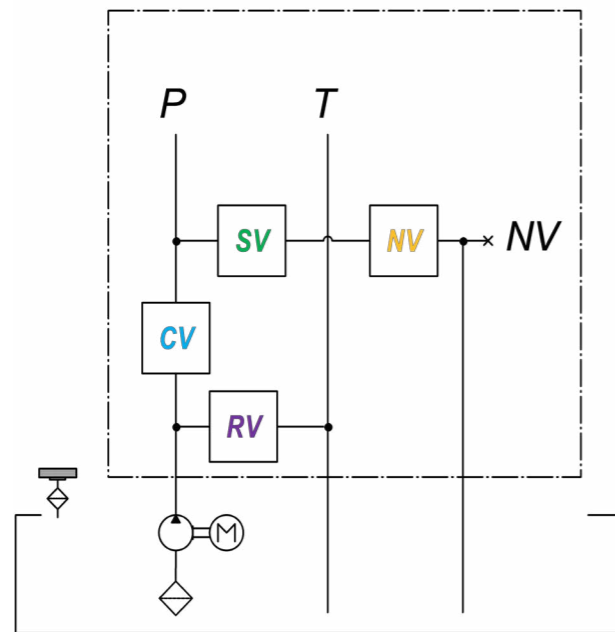
● VNKPP010106 CENTRAL MANIFOLD, 2 WAYS, K0

ASS. CODE

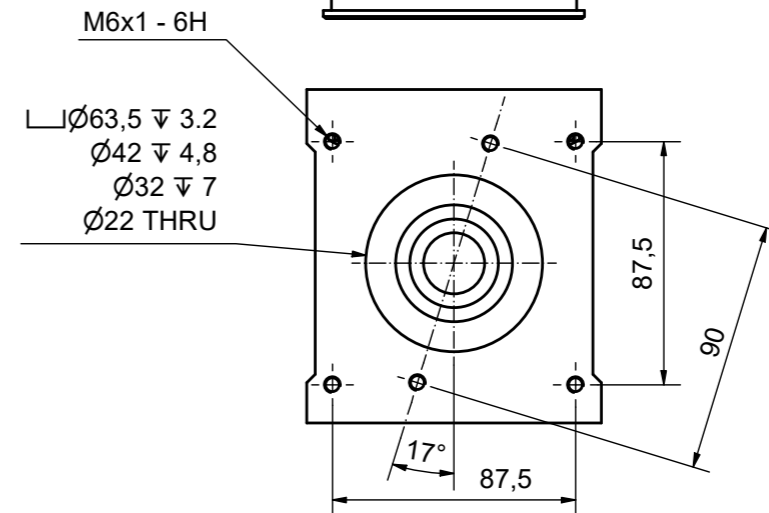


ASS. CODE

HYDRAULIC DIAGRAM

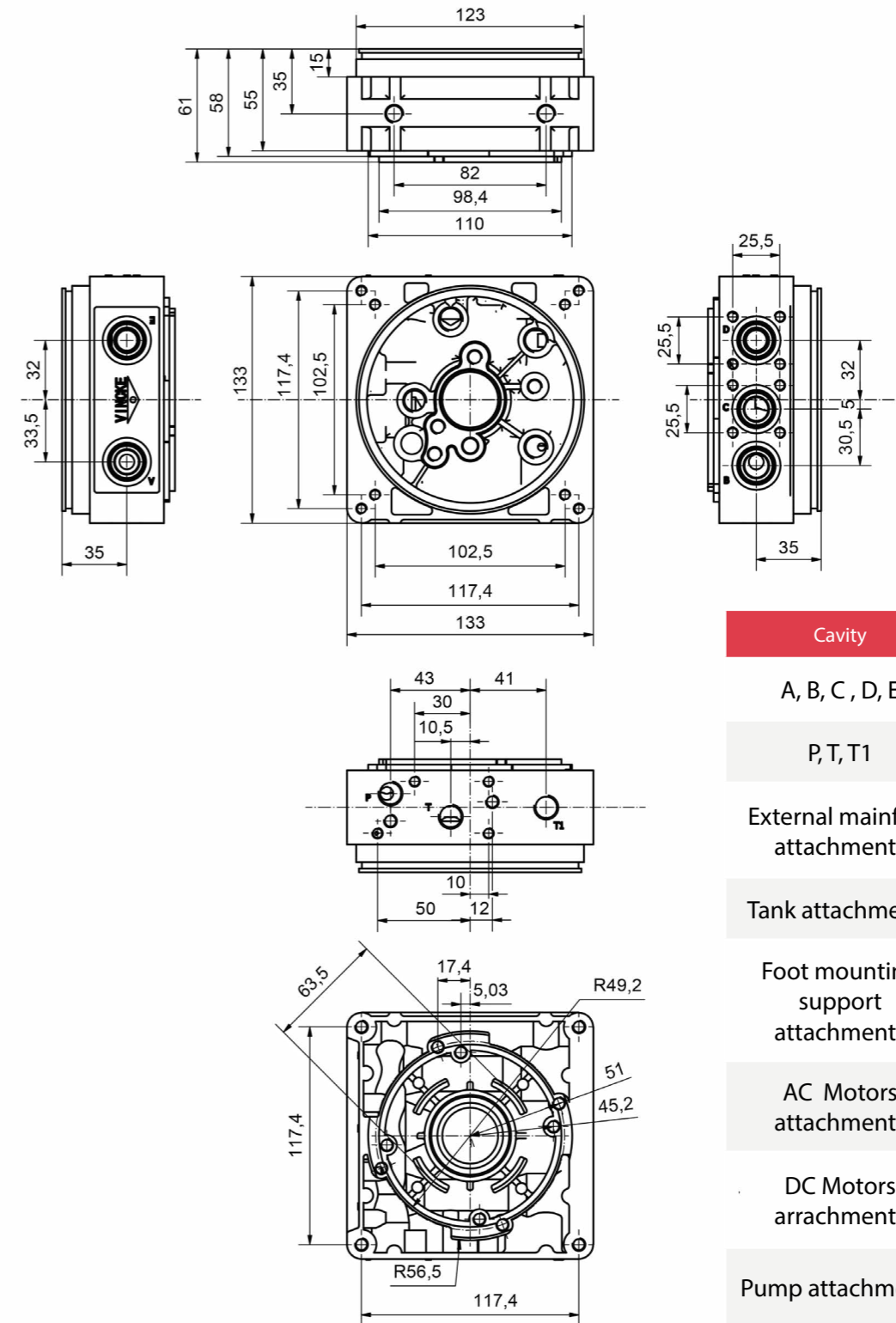
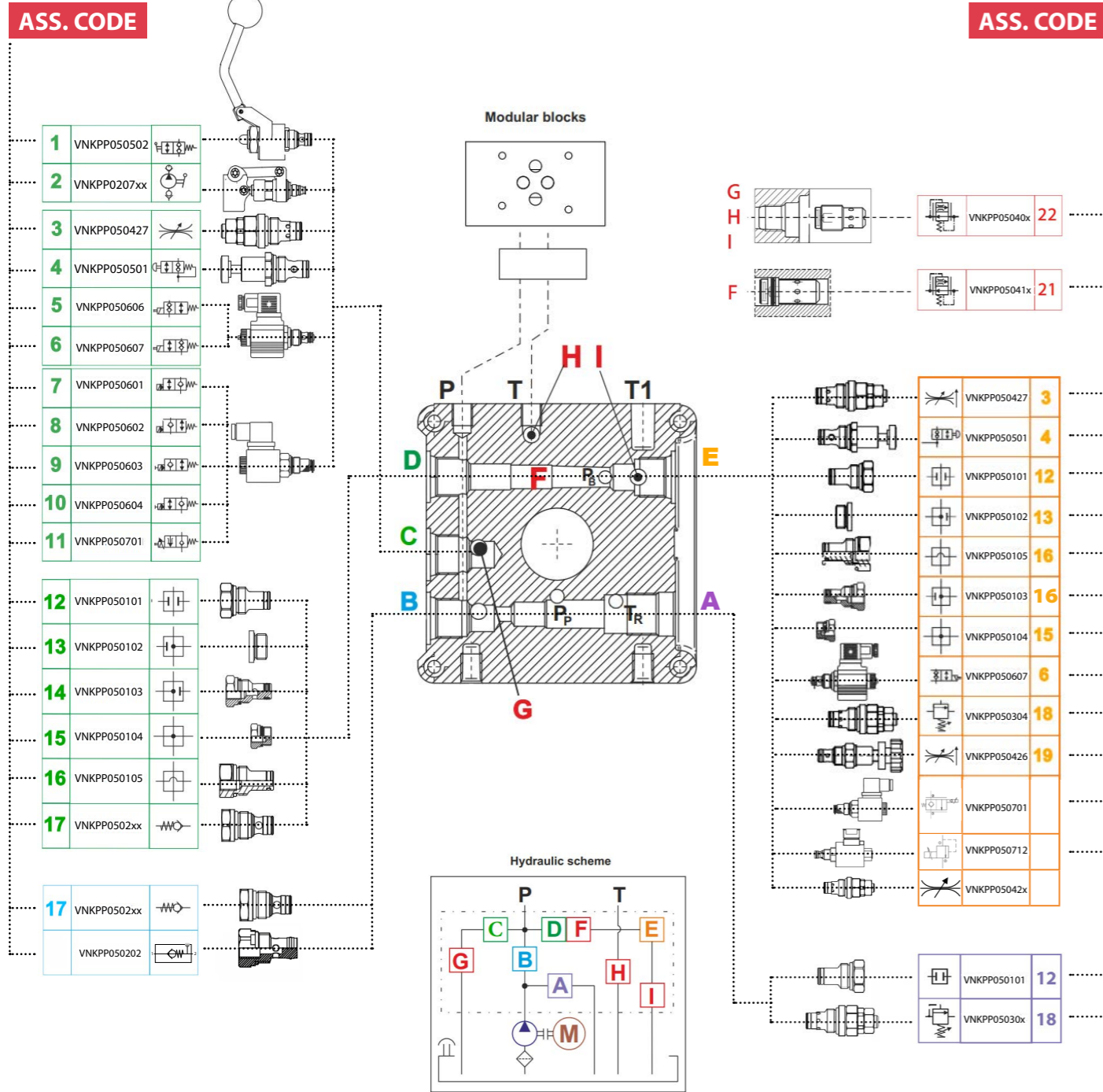


N°	Ø	X	Y
1	M5	80,43	61,11
2	6,5	79	88
3	1/4" BSP	75	37
4	M5	55,84	44,98
5	5,5	50,5	79,91
6	M5	37,89	71,81
7	M5	36,12	84,16



Cavity	Threads
SV-RV-CV	SAE08-2
P, T, NV	1/4" BSP
Tank attachments	8 x M5
Foot munting support attachments	2 x M10
AC Motors attachments	4 x M6
DC Motors arranchments	2 x M6
Pump attachments	2 x M5

● VNKPP010101 CENTRAL MANIFOLD K1

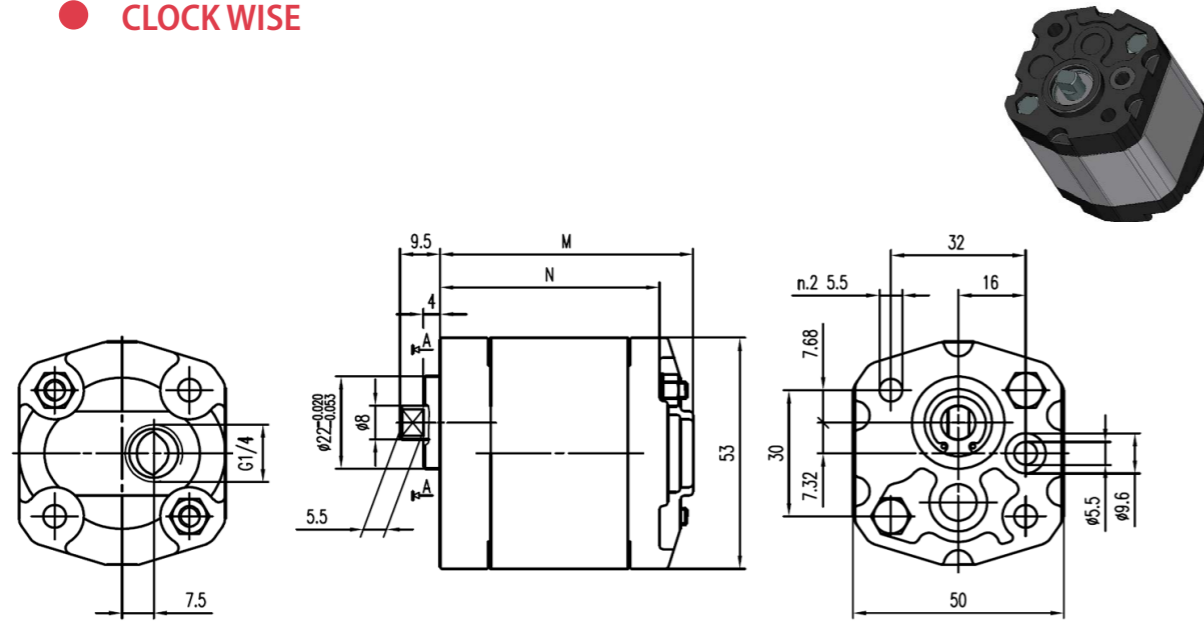


Cavity	Threads
A, B, C, D, E	3/4" UNF
P, T, T1	1/4" BSP
External manifold attachments	2 x M8 4 x M6
Tank attachments	4 x M6
Foot mounting support attachments	2 x M10
AC Motors attachments	4 x M8
DC Motors attachments	4 x M6
Pump attachments	2 x M8
Hand pump cap attachments	4 x M5

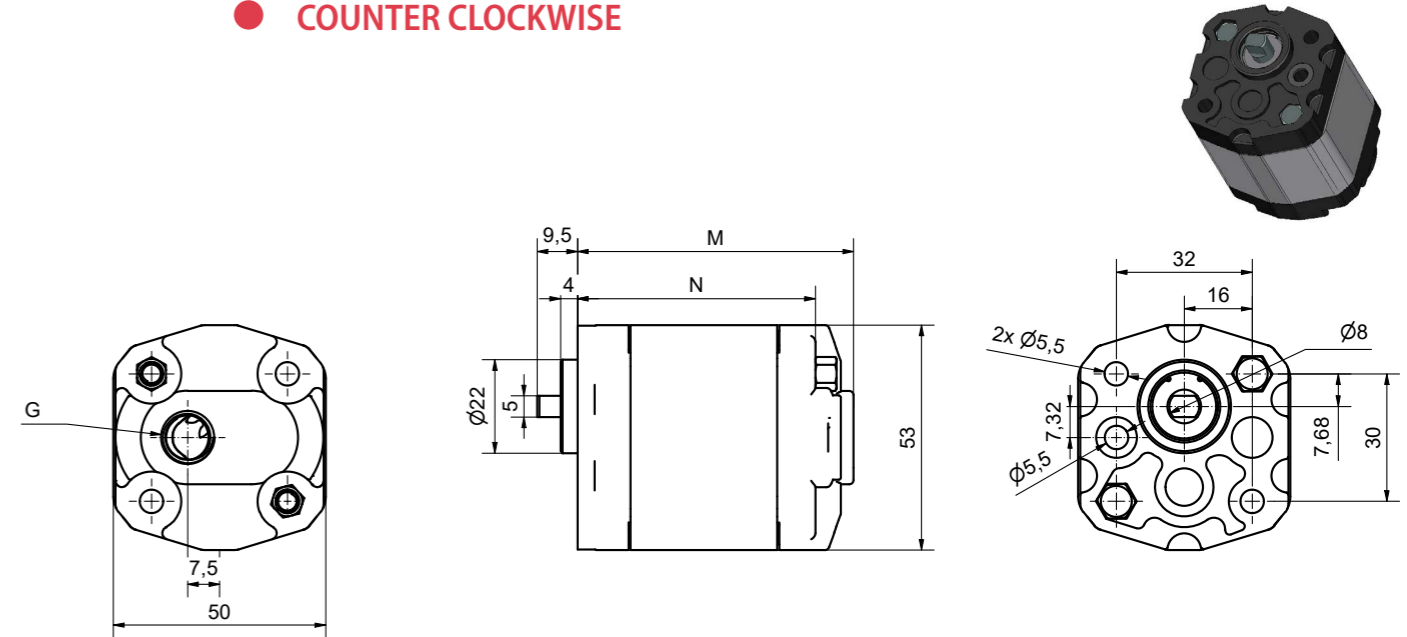
VNKO GEAR PUMP

GROUP 0

● CLOCK WISE



● COUNTER CLOCKWISE



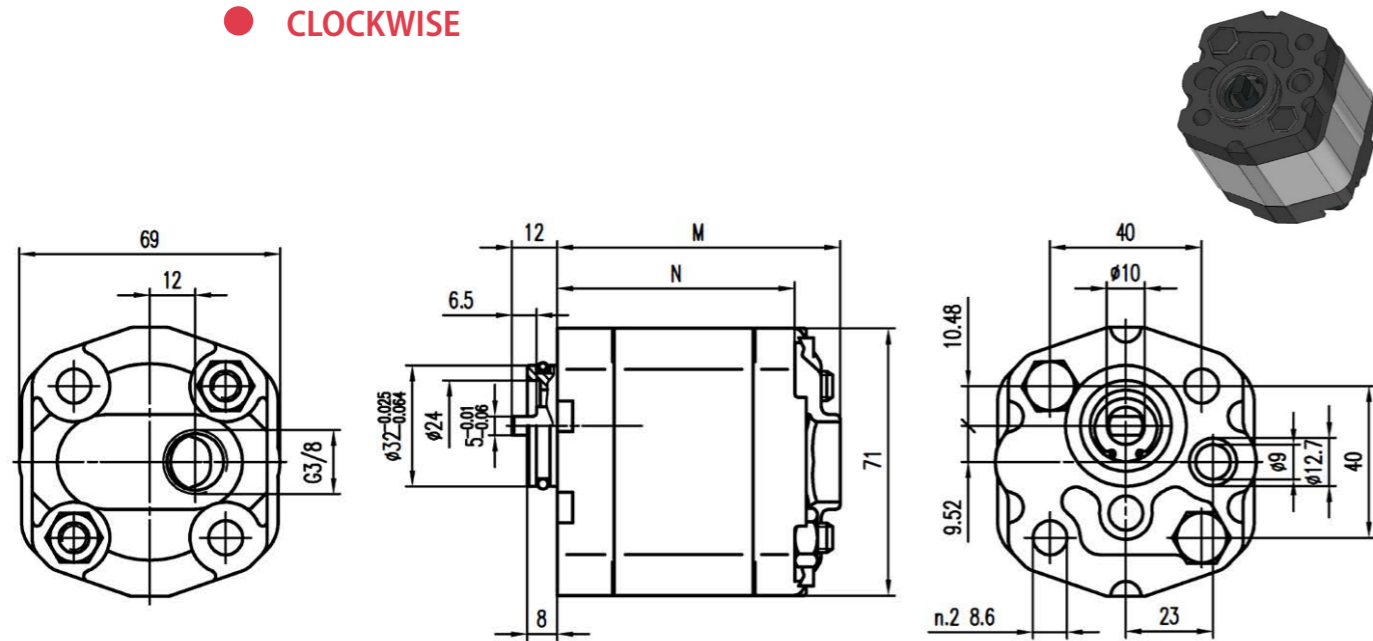
Type	Reference	cm ³ /rev	Max. Pressure			Max. Speed r/min	Min. Speed r/min	Dimensions	
			P1	P2	P3			M	N
			mm	mm	mm			mm	
VNKPP020101	VNK0-0,19-01-02-B-38-OR-C	0.19	200	230	250	700	1000	60	58.2
VNKPP020102	VNK0-0,25-01-02-B-38-OR-C	0.25	200	230	250	700	1000	60.5	59
VNKPP020103	VNK0-0,38-01-02-B-38-OR-C	0.38	200	230	250	700	1000	61.5	60.3
VNKPP020104	VNK0-0,50-01-02-B-38-OR-C	0.5	200	230	250	700	1000	62.5	61
VNKPP020105	VNK0-0,65-01-02-B-38-OR-C	0.65	200	230	250	700	1000	63.5	54.5
VNKPP020106	VNK0-0,75-01-02-B-38-OR-C	0.75	200	230	250	700	1000	64.5	63.5
VNKPP020107	VNK0-0,88-01-02-B-38-OR-C	0.88	200	230	250	700	1000	65.5	56.5
VNKPP020108	VNK0-1-01-02-B-38-OR-C	1.00	200	230	250	6000	850	66.5	66
VNKPP020109	VNK0-1,25-01-02-B-38-OR-C	1.25	200	230	250	500	700	68.5	68.5
VNKPP020110	VNK0-1,5-01-02-B-38-OR-C	1.5	200	230	250	400	600	70.5	70
VNKPP020111	VNK0-1,75-01-02-B-38-OR-C	1.75	180	210	230	4000	600	72.5	73
VNKPP020112	VNK0-2-01-02-B-38-OR-C	2	160	190	210	3000	500	74.5	75.5

Type	Reference	cm ³ /rev	Max. Pressure			Max. Speed r/min	Min. Speed r/min	Dimensions	
			P1	P2	P3			M	N
			mm	mm	mm			mm	mm
VNKPP020201	VNK0-0,19-01-02-B-38-OR-A	0.19	200	230	250	700	1000	60	58.2
VNKPP020202	VNK0-0,25-01-02-B-38-OR-A	0.25	200	230	250	700	1000	60.5	59
VNKPP020203	VNK0-0,38-01-02-B-38-OR-A	0.38	200	230	250	700	1000	61.5	60.3
VNKPP020204	VNK0-0,50-01-02-B-38-OR-A	0.5	200	230	250	700	1000	62.5	61
VNKPP020205	VNK0-0,65-01-02-B-38-OR-A	0.65	200	230	250	700	1000	63.5	54.5
VNKPP020206	VNK0-0,75-01-02-B-38-OR-A	0.75	200	230	250	700	1000	64.5	63.5
VNKPP020207	VNK0-0,88-01-02-B-38-OR-A	0.88	200	230	250	700	1000	65.5	56.5
VNKPP020208	VNK0-1-01-02-B-38-OR-A	1.00	200	230	250	6000	850	66.5	66
VNKPP020209	VNK0-1,25-01-02-B-38-OR-A	1.25	200	230	250	500	700	68.5	68.5
VNKPP020210	VNK0-1,5-01-02-B-38-OR-A	1.5	200	230	250	400	600	70.5	70
VNKPP020211	VNK0-1,75-01-02-B-38-OR-A	1.75	180	210	230	4000	600	72.5	73
VNKPP020212	VNK0-2-01-02-B-38-OR-A	2	160	190	210	3000	500	74.5	75.5

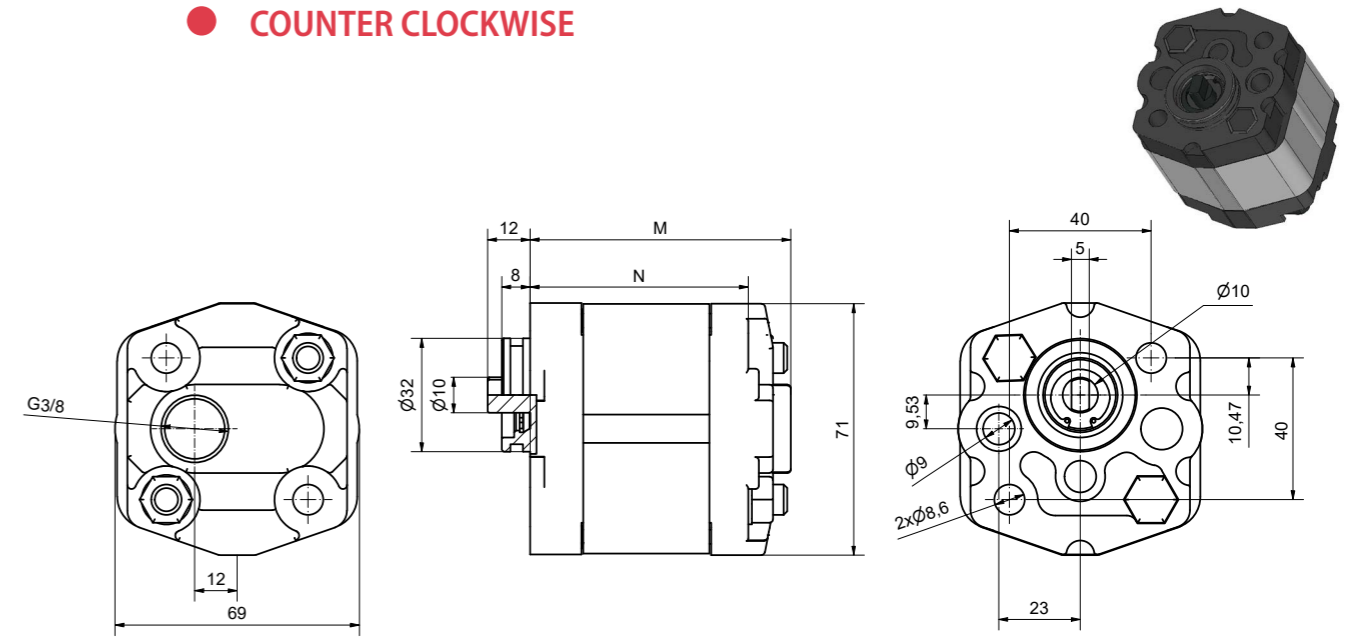
GEAR PUMP

GROUP 1

● CLOCKWISE



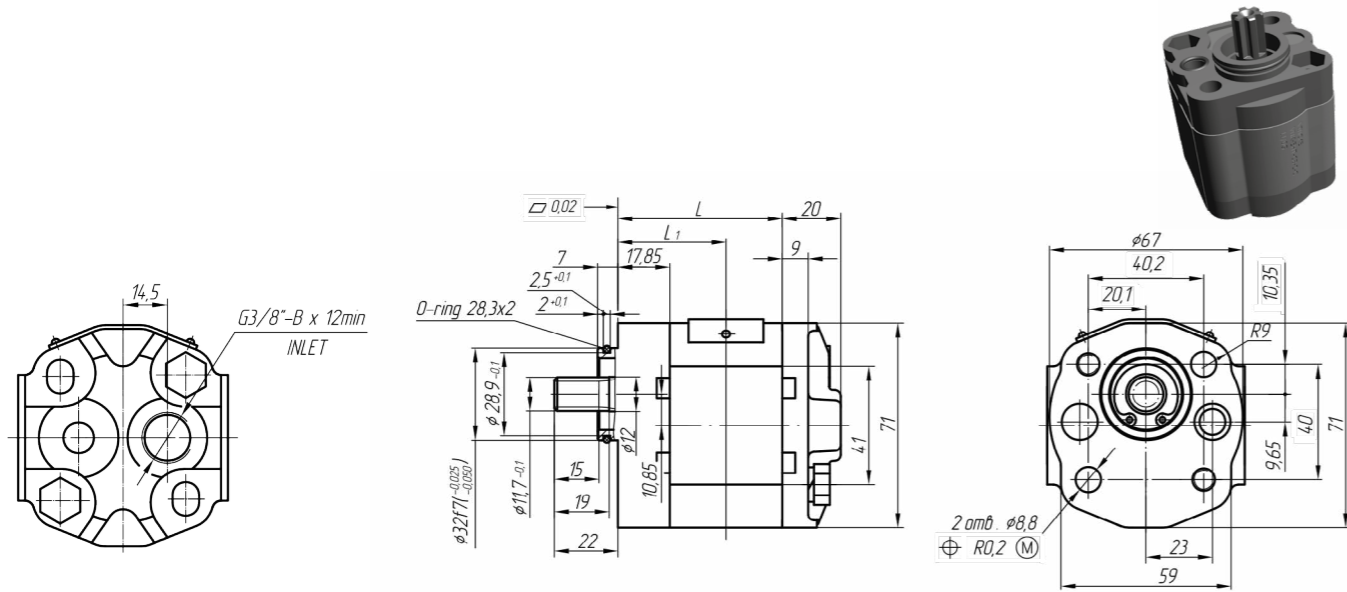
● COUNTER CLOCKWISE



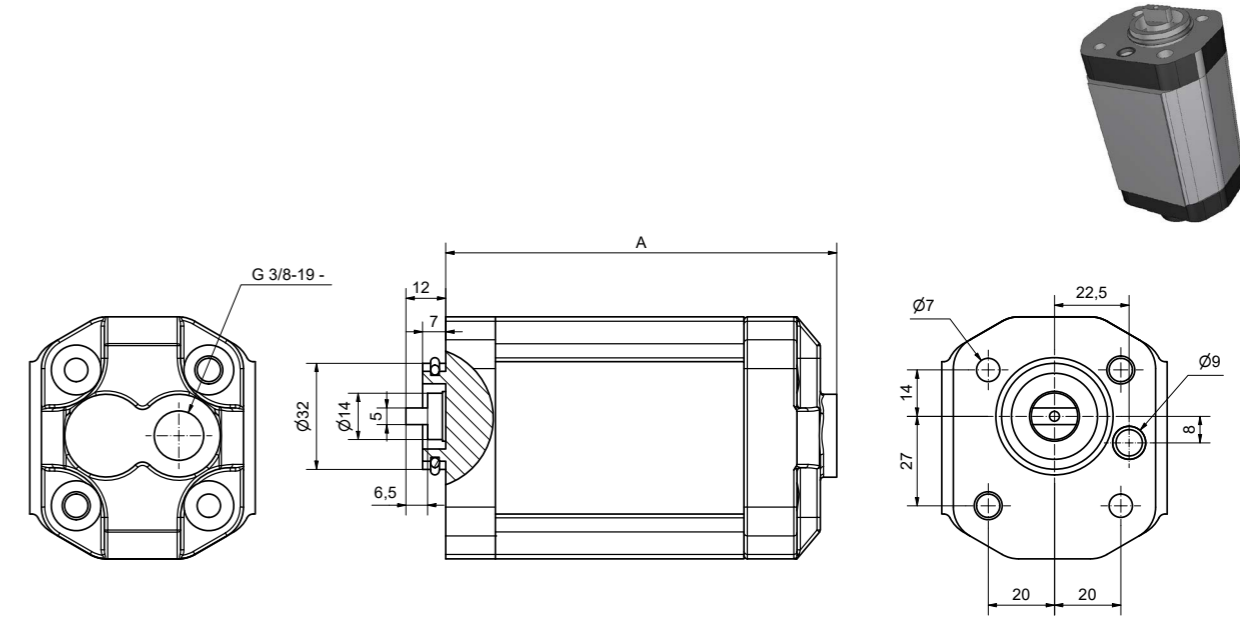
Type	Reference	cm ³ /rev	Max. Pressure			Max. Speed rW/min	Min. Speed r/min	Dimensions	
			P1	P2	P3			M	L
								mm	mm
VNKPP020301	VNK1-0,8-02-B-38-OR-C	0.8	250	270	290	6000	1000	73.5	61.5
VNKPP020302	VNK1-1,1-02-B-38-OR-C	1.1	250	270	290	6000	1000	74	62
VNKPP020303	VNK1-1,3-02-B-38-OR-C	1.3	250	270	290	6000	1000	75	63
VNKPP020304	VNK1-1,6-02-B-38-OR-C	1.6	250	270	290	6000	1000	76	64
VNKPP020305	VNK1-1,8-02-B-38-OR-C	1.8	250	270	290	6000	1000	77	65
VNKPP020306	VNK1-2,1-02-B-38-OR-C	2.1	250	270	290	6000	1000	78	66
VNKPP020307	VNK1-2,7-02-B-38-OR-C	2.7	250	270	290	6000	800	80	68
VNKPP020308	VNK1-3,2-02-B-38-OR-C	3.2	250	270	290	5000	800	82	70
VNKPP020309	VNK1-3,7-02-B-38-OR-C	3.7	250	270	290	4500	800	84	72
VNKPP020310	VNK1-4,2-02-B-38-OR-C	4.2	250	270	290	4000	800	86	74
VNKPP020311	VNK1-4,8-02-B-38-OR-C	4.8	230	250	270	3500	600	88	76
VNKPP020312	VNK1-5,8-02-B-38-OR-C	5.8	230	250	270	3000	600	92	80
VNKPP020313	VNK1-7-02-B-38-OR-C	7	210	230	250	2500	600	96	84
VNKPP020314	VNK1-8-02-B-38-OR-C	8	180	200	230	2100	600	100	88
VNKPP020315	VNK1-9,8-02-B-38-OR-C	9.8	150	170	190	2100	600	104	92

Type	Reference	cm ³ /rev	Max. Pressure			Max. Speed rW/min	Min. Speed r/min	Dimensions	
			P1	P2	P3			M	L
								mm	mm
VNKPP020401	VNK1-0,8-02-B-38-OR-A	0.8	250	270	290	6000	1000	73.5	61.5
VNKPP020402	VNK1-1,1-02-B-38-OR-A	1.1	250	270	290	6000	1000	74	62
VNKPP020403	VNK1-1,3-02-B-38-OR-A	1.3	250	270	290	6000	1000	75	63
VNKPP020404	VNK1-1,6-02-B-38-OR-A	1.6	250	270	290	6000	1000	76	64
VNKPP020405	VNK1-1,8-02-B-38-OR-A	1.8	250	270	290	6000	1000	77	65
VNKPP020406	VNK1-2,1-02-B-38-OR-A	2.1	250	270	290	6000	1000	78	66
VNKPP020407	VNK1-2,7-02-B-38-OR-A	2.7	250	270	290	6000	800	80	68
VNKPP020408	VNK1-3,2-02-B-38-OR-A	3.2	250	270	290	5000	800	82	70
VNKPP020409	VNK1-3,7-02-B-38-OR-A	3.7	250	270	290	4500	800	84	72
VNKPP020410	VNK1-4,2-02-B-38-OR-A	4.2	250	270	290	4000	800	86	74
VNKPP020411	VNK1-4,8-02-B-38-OR-A	4.8	230	250	270	3500	600	88	76
VNKPP020412	VNK1-5,8-02-B-38-OR-A	5.8	230	250	270	3000	600	92	80
VNKPP020413	VNK1-7-02-B-38-OR-A	7	210	230	250	2500	600	96	84
VNKPP020414	VNK1-8,0-02-B-38-OR-A	8	180	200	230	2100	600	100	88
VNKPP020415	VNK1-9,2-02-B-38-OR-A	9.8	150	170	190	2100	600	104	92

● CLOCK WISE - SPLINED SHAFT



● CLOCK WISE - HELICAL PUMP




Type	Reference	cm ³ /rev	Max. Pressure		Max. Speed r/min	Min. Speed r/min	Dimensions	
			P1	P2			M	N
			mm	mm	mm	mm		
VNKPP020502	VNK1-1,2-7-B-38-OR-C SPLINED	1.2	300	320	1500	3500	81,1	70,1
VNKPP020503	VNK1-1,6-7-B-38-OR-C SPLINED	1.6	300	320	1500	3500	83,1	72,1
VNKPP020504	VNK1-2,1-7-B-38-OR-C SPLINED	2.1	300	320	1500	3500	84,9	73,9
VNKPP020505	VNK1-2,5-7-B-38-OR-C SPLINED	2.5	300	320	1500	3500	86,4	75,4
VNKPP020506	VNK1-3,2-7-B-38-OR-C SPLINED	3.2	300	320	1500	3500	89,3	78,3
VNKPP020507	VNK1-3,5-7-B-38-OR-C SPLINED	3.5	300	320	1500	3000	90,6	79,6
VNKPP020508	VNK1-4,2-7-B-38-OR-C SPLINED	4.2	300	320	1500	2800	94,3	83,3
VNKPP020509	VNK1-5,0-7-B-38-OR-C SPLINED	5.0	270	290	1500	2400	97,3	86,3
VNKPP020510	VNK1-6,0-7-B-38-OR-C SPLINED	6.0	240	260	1500	2000	101,1	90,1
VNKPP020511	VNK1-7,0-7-B-38-OR-C SPLINED	7.0	200	230	1500	1800	105,1	94,1
VNKPP020512	VNK1-8,0-7-B-38-OR-C SPLINED	7.8	170	200	1500	1800	108,9	97,9
VNKPP020513	VNK1-10-7-B-38-OR-C SPLINED	10	140	170	1500	1800	118,1	107,1
VNKPP020514	VNK1-12-7-B-38-OR-C SPLINED	12	140	170	1500	1800	125,5	114,5

Type	Reference	cm ³ /rev	Max. Pressure	Max. Speed	A±0.8
			bar	r/min	
VNKPP020602	VNK1-2,2-02-B-38-OR-C-SS HELICAL	2.3	220	4000	89.5
VNKPP020603	VNK1-2,6-02-B-38-OR-C-SS HELICAL	2.7	220	4000	91.5
VNKPP020604	VNK1-3,2-02-B-38-OR-C-SS HELICAL	3.2	220	4000	93
VNKPP020605	VNK1-3,8-02-B-38-OR-C-SS HELICAL	3.8	220	3500	95.5
VNKPP020606	VNK1-4,3-02-B-38-OR-C-SS HELICAL	4	275	3500	97.5
VNKPP020607	VNK1-5-02-B-38-OR-C-SS HELICAL	5	275	3500	100.5
VNKPP020608	VNK1-6-02-B-38-OR-C-SS HELICAL	6	275	3500	105.5
VNKPP020609	VNK1-8-02-B-38-OR-C-SS HELICAL	8	246	3500	111.5
VNKPP020610	VNK1-10-02-B-38-OR-C-SS HELICAL	10	222	3500	118.5
VNKPP020612	VNK1-13-02-B-38-OR-C-SS HELICAL	13	176	3500	125

● HAND PUMP



HAND PUMP

Ref	cm ³	
VNKPP020701	2	3/4 - UNF

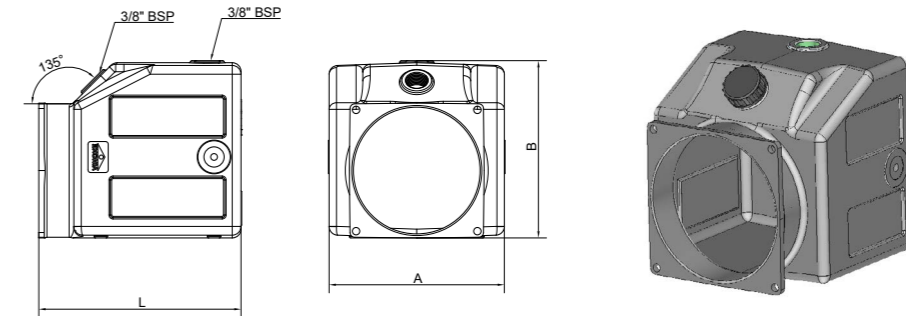


HAND PUMP

Ref	cm ³	
VNKPP020702	7	3/4 - UNF

TANKS

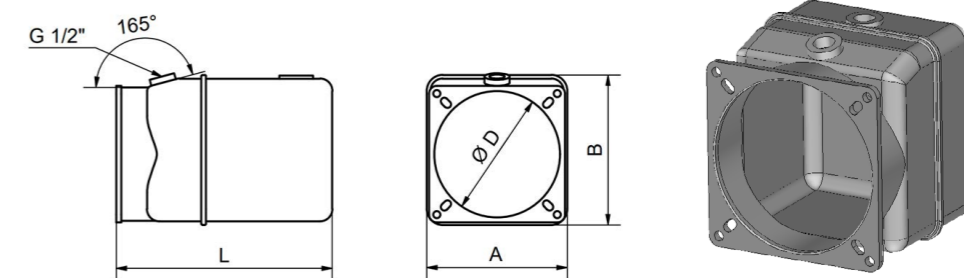
● PLASTIC TANK, VERTICAL / HORIZONTAL, RECTANGULAR BASE, GROUP K0



PLASTIC TANK RECTANGULAR BASE GROUP K0

Reference	ØD (mm)	L (mm)	A (mm)	B (mm)	Vol. (L)	Position
VNKPP030101,2	94	125	130	130	1	H/V
VNKPP030102,2	94	150	130	130	1.5	H/V
VNKPP030103,1	94	260	140	125	2.5	H/V
VNKPP030104,0	94	395	140	125	4	H/V

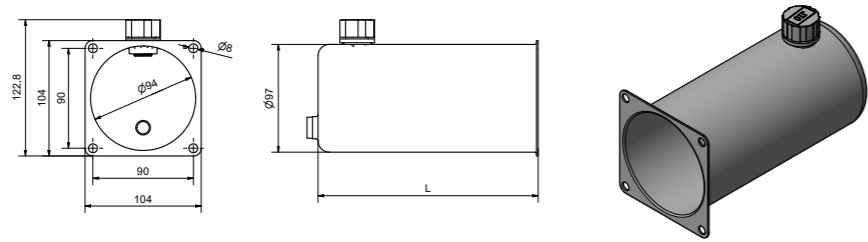
● PLASTIC TANK, VERTICAL / HORIZONTAL, RECTANGULAR BASE, GROUP K1



PLASTIC TANK RECTANGULAR BASE GROUP K1

Reference	ØD (mm)	L (mm)	A (mm)	B (mm)	Vol. (L)
VNKPP030301	123	135	130	135	1.5
VNKPP030302	123	205	130	135	2.5
VNKPP030303	123	280	130	135	3.8
VNKPP030303.1	123	200	180	180	4
VNKPP030304	123	260	170	170	5
VNKPP030305	123	330	170	170	8
VNKPP030306	123	440	170	170	10
VNKPP030307	123	545	170	170	12

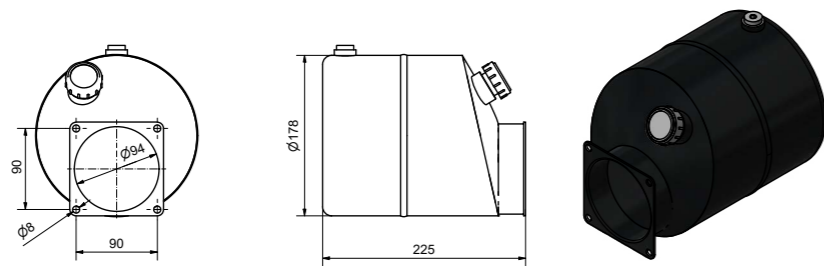
● METALIC TANK, VERTICAL / HORIZONTAL, RECTANGULAR BASE, GROUP K0



METALLIC TANK RECTANGULAR BASE GROUP K0

Reference	ØD (mm)	L (mm)	Vol. (L)	Position
VNKPP030202	94	197	1.2	H/V
VNKPP030203	94	330	1	H/V

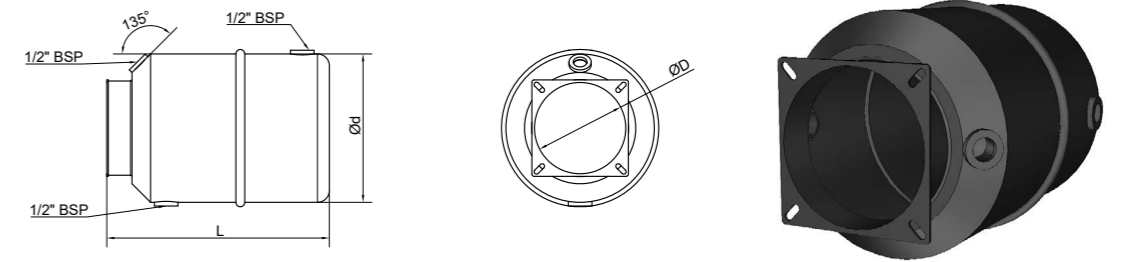
● METALIC TANK, VERTICAL / HORIZONTAL, RECTANGULAR BASE, GROUP K0



METALLIC TANK RECTANGULAR BASE GROUP K0

Reference	L (mm)	Vol. (L)	Position
VNKPP030204	225	4	H/V

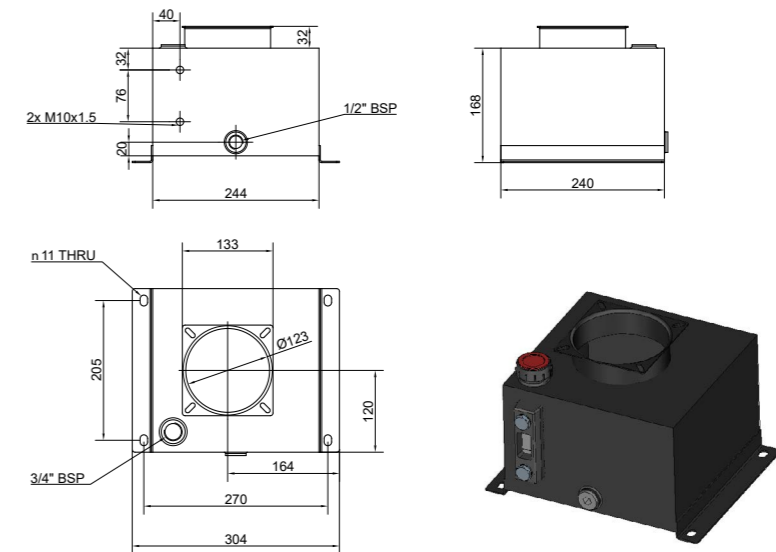
● METALIC TANK, VERTICAL / HORIZONTAL, ROUND BASE, GROUP K1



METALLIC TANK ROUND BASE GROUP K1

Reference	ØD (mm)	L (mm)	Ød (mm)	Vol. (L)
VNKPP030401	123	155	125	1.5
VNKPP030402	123	230	125	2.5
VNKPP030403	123	210	200	5
VNKPP030404	123	300	200	8
VNKPP030405	123	370	200	10
VNKPP030406	123	445	200	12

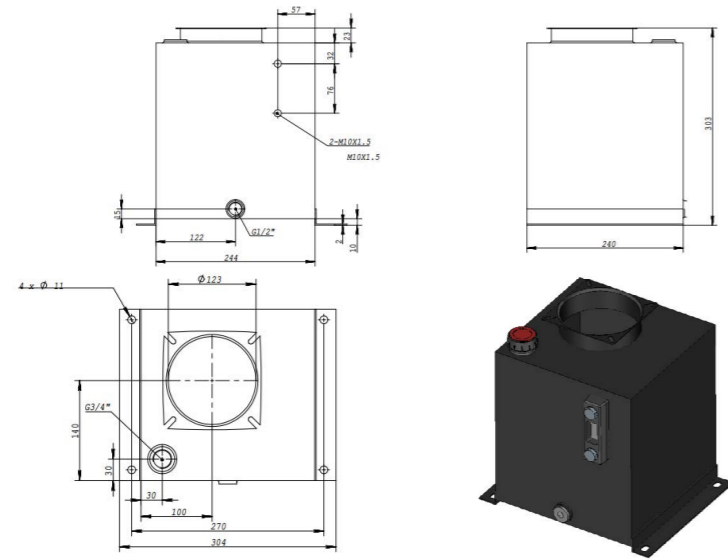
● METALIC TANK, VERTICAL, GROUP K1



VERTICAL TANK 7L K1 GROUP W/LEVEL

Reference	Mounting	ØD (mm)	L (mm)	B (mm)	H (mm)	E (mm)	Vol. (L)
VNKPP030501	Vertical	123	240	240	160	10	7

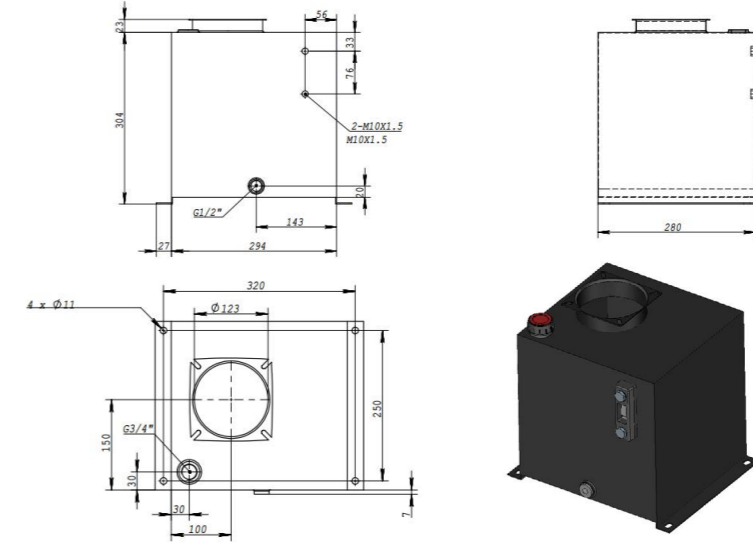
● METALIC TANK, VERTICAL WITH LEVEL, SQUARE / RECTANGULAR BODY, GROUP K1



VERTICAL SQUARE TANK 15L K1 GROUP W/LEVEL

Reference	Mounting	ØD (mm)	L (mm)	B (mm)	H (mm)	E (mm)	Vol. (L)
VNKPP030502	Vertical	123	245	240	295	10	15

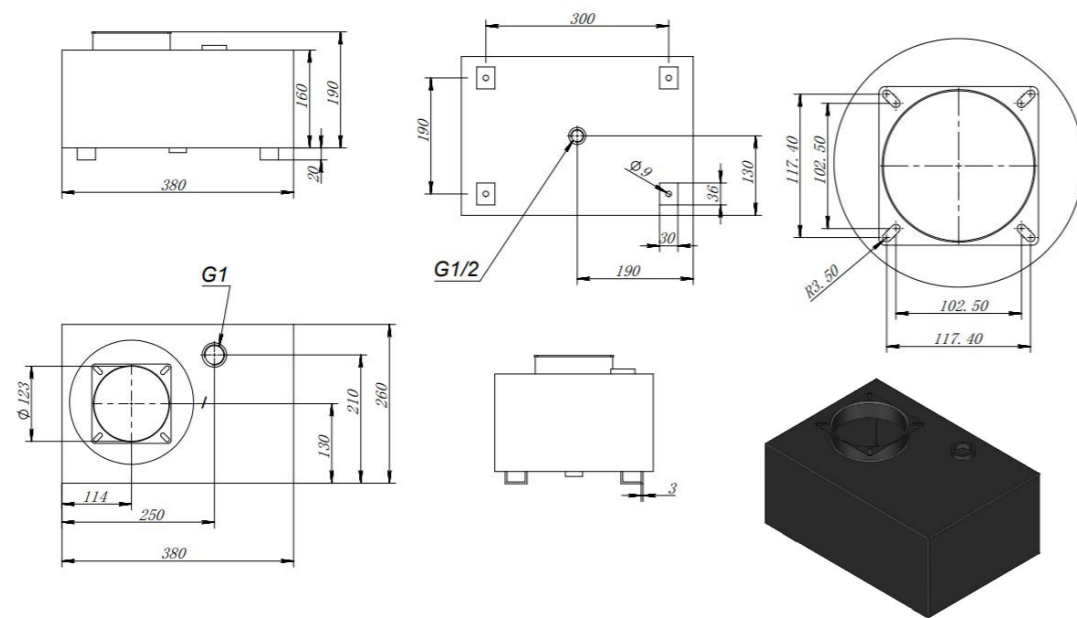
● METALIC TANK, VERTICAL / HORIZONTAL WITH LEVEL, SQUARE / RECTANGULAR BODY, GROUP K1



VERTICAL TANK 20L K1 GROUP W/LEVEL

Reference	Mounting	ØD (mm)	L (mm)	B (mm)	H (mm)	E (mm)	Vol. (L)
VNKPP030504	Vertical	123	295	280	320	10	20

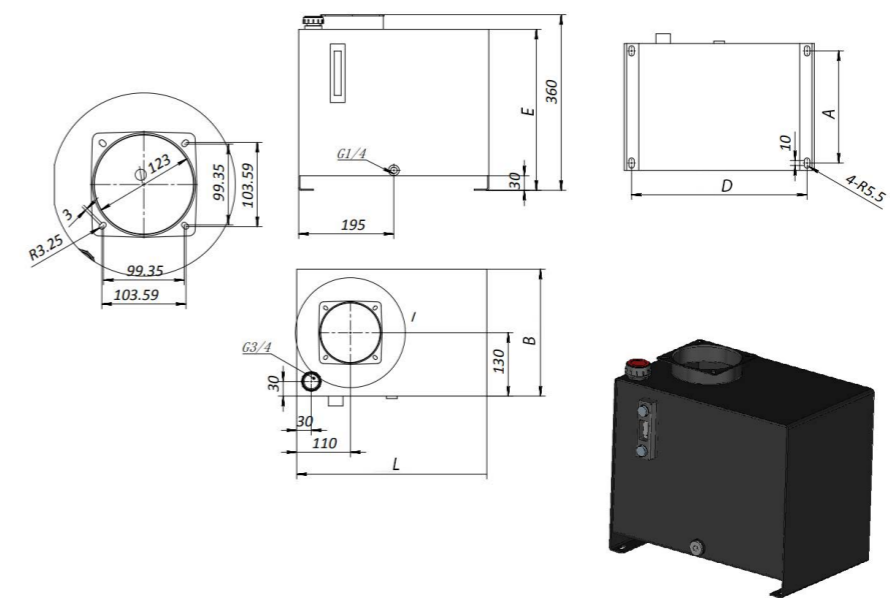
● METALIC TANK, VERTICAL / HORIZONTAL WITH LEVEL, SQUARE / RECTANGULAR BODY, GROUP K1



VERTICAL RECTANGULAR TANK 15L K1 GROUP W/LEVEL

Reference	Mounting	ØD (mm)	L (mm)	B (mm)	H (mm)w	E (mm)	Vol. (L)
VNKPP030503	Vertical	123	380	260	160	20	15

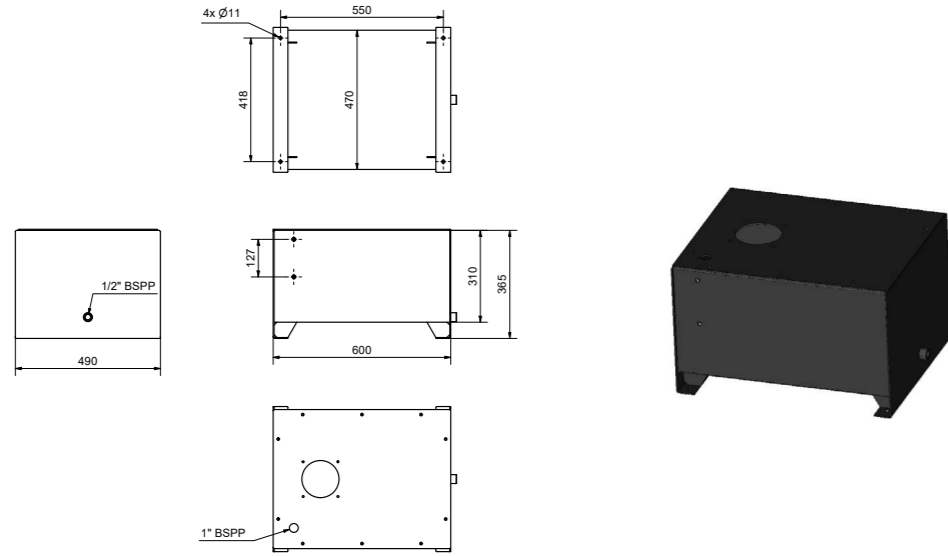
● METALIC TANK, VERTICAL WITH LEVEL, SQUARE / RECTANGULAR BODY, GROUP K1



VERTICAL TANK 30L K1 GROUP W/LEVEL

Reference	Mounting	ØD (mm)	L (mm)	B (mm)	H (mm)	A	D	Vol. (L)
VNKPP030505	Vertical	123	390	260	300	230	360	30
VNKPP030505.2	Vertical	123	350	290	360	250	320	30

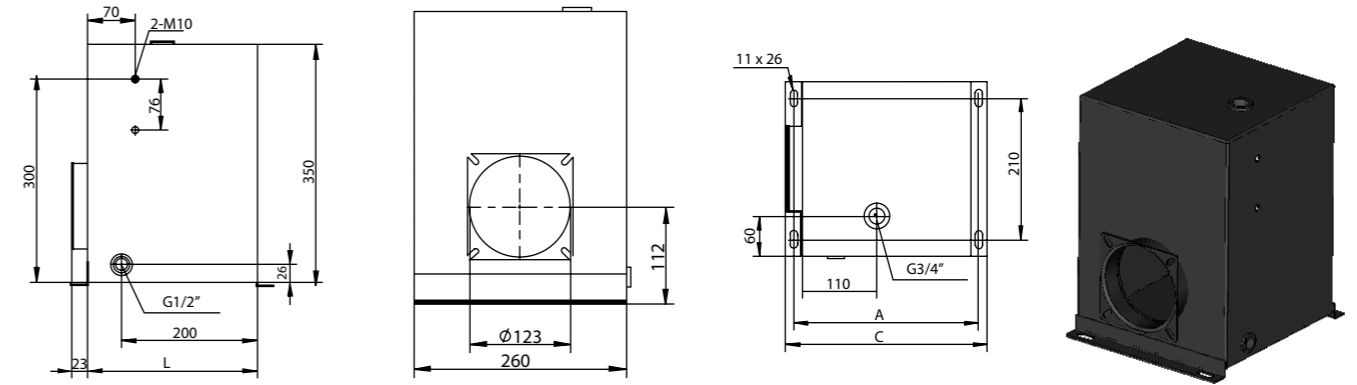
● METALIC TANK, VERTICAL READY FOR LEVEL AND FILLER CAP



VERTICAL TANK 30L K1 GROUP W/LEVEL

Reference	Mounting	ØD (mm)	L (mm)	B (mm)	H (mm)	A	D	Vol. (L)
VNKPP030505.1	Vertical	123	600	490	365	418	550	55

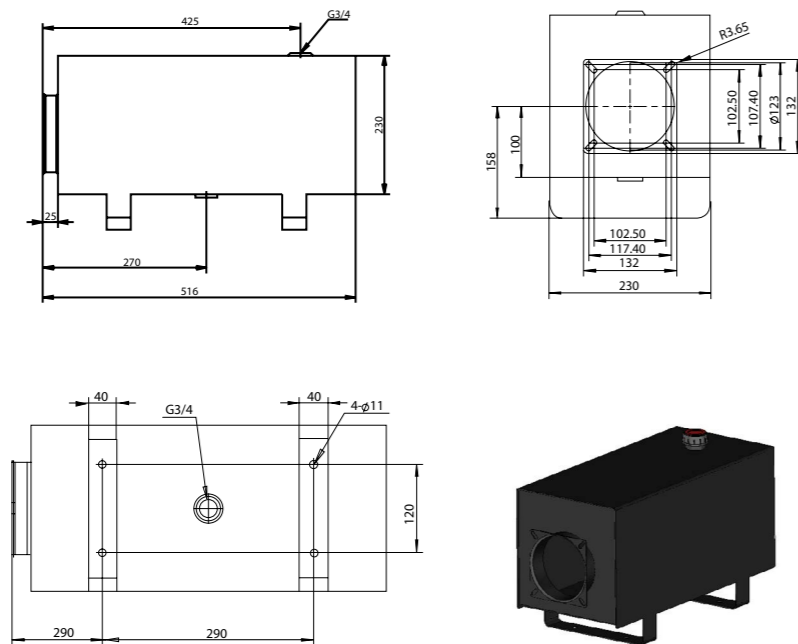
● METALIC TANK, HORIZONTAL WITH LEVEL, SQUARE / RECTANGULAR BODY, GROUP K1 VINCKE



METALIC TANK HORIZTONTAL W/ LEVEL

Reference	ØD (mm)	L (mm)	A (mm)	B (mm)	C (mm)	D (mm)	Vol. (L)
VNKPP030507	123	350	275	260	300	210	24
VNKPP030508	123	350	425	260	450	210	30
VNKPP030510	123	300	465	400	490	340	50

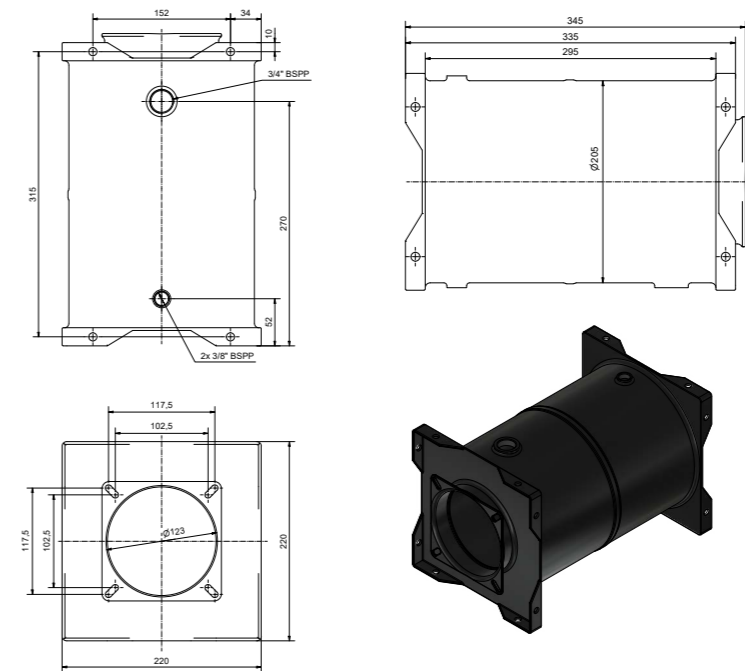
● METALIC TANK, HORIZONTAL WITH LEVEL, SQUARE / RECTANGULAR BODY, GROUP K1 VINCKE



HORIZONTAL TANK 18L K1 GROUP W/LEVEL

Reference	Mounting	ØD (mm)	L (mm)	B (mm)	H (mm)	E (mm)	Vol. (L)
VNKPP030506	Horizontal	123	520	230	230	55	18


● METALIC TANK, VERTICAL / HORIZONTAL WITH LEVEL, SQUARE / RECTANGULAR BODY, GROUP K1

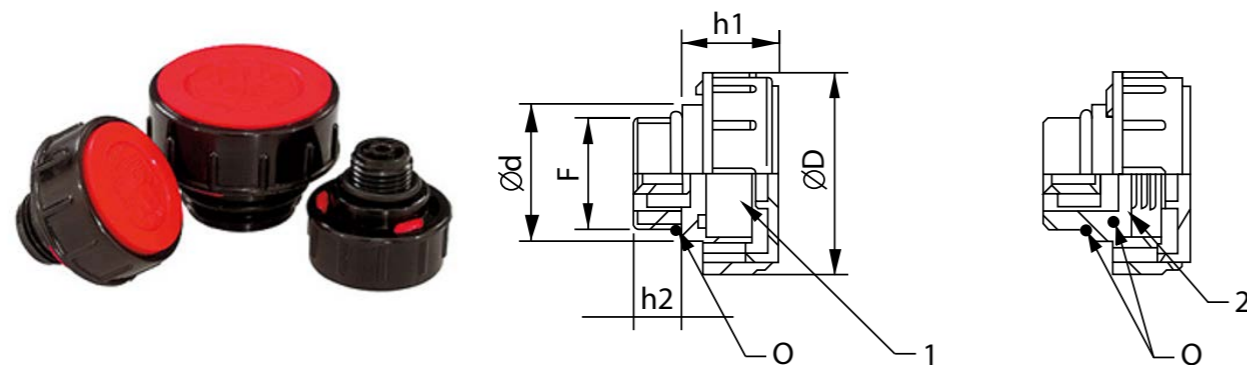



Reference	Mounting	ØD (mm)	A (mm)	Holes C (mm)	Vol. (L)
VNKPP030550	Horizontal	123	227	267	7
VNKPP030551	Horizontal	123	324	364	10

● ASSEMBLIES ACCESORIES



Reference	Type	
VNKPP030604	O-RING K0	-
VNKPP030602	O-RING K1	-
VNKPP020703	ADAPT.	1/2"
VNKPP060202	RETURN FITTING	1/4"

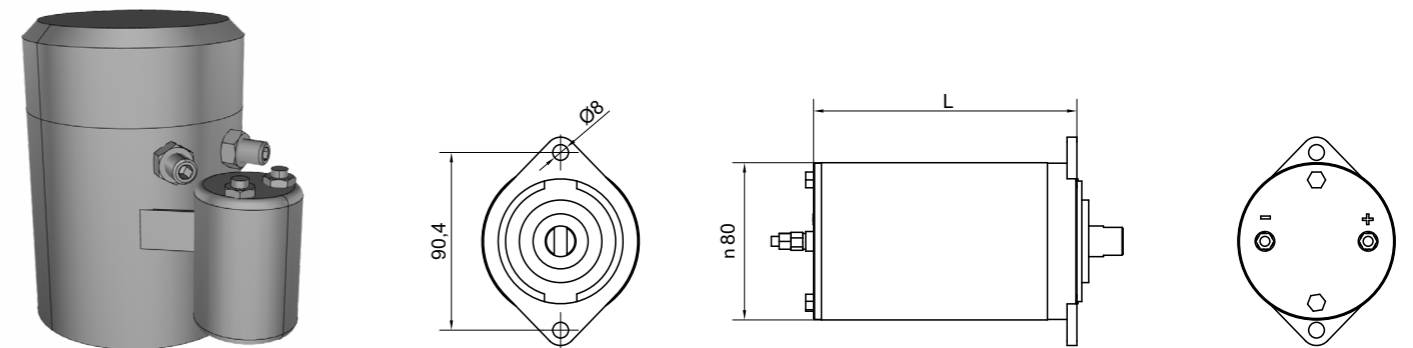


Reference	Type		D	d	h1	h2
VNKPP030604	PLASTIC PLUG	3/8"	36	23	21	11
VNKPP030605	PLASTIC PLUG	1/2"	41	28	21	12
VNKPP030606	PLASTIC PLUG	3/4"	47	33	22	12
VNKPP030607	PLASTIC PLUG	1"	52	38	25	12

ELECTRIC MOTORS DC

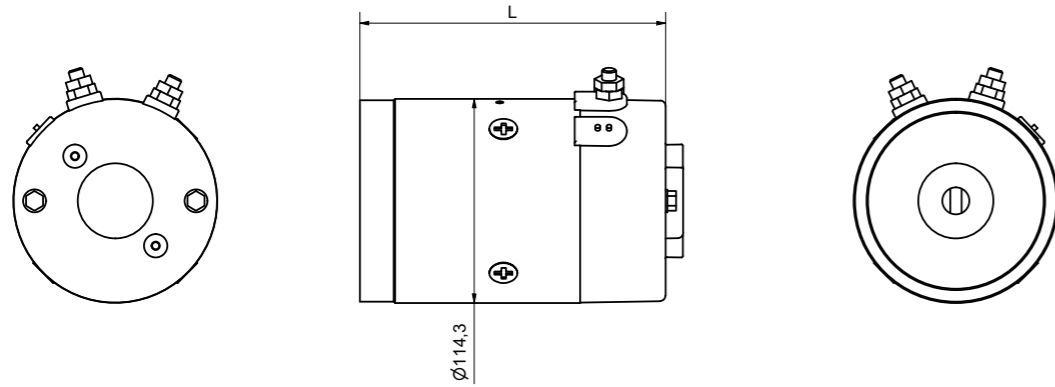
● ELECTRIC DC MOTOR WITH OR WITHOUT RELAY

● T-80



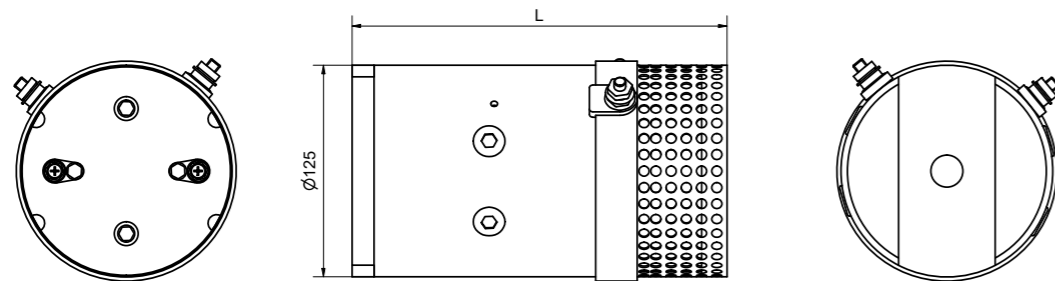
Reference	Description	Nominale Duty Cycle	Nominal Speed (rpm)	Rotation	Nominal Current	L (mm)
VNKPPP040100	Motor T-80 24DC 500W w/o Relay	S2 = 2,5 min S3 = 10% ED	2300	CW-CCW	150A	144
VNKPP040102	Motor T-80 12DC 500W w/ Relay	S2 = 2,5 min S3 = 10% ED	2300	CW-CCW	150A	136
VNKPP040103	Motor T-80 12DC 800W w/ Relay	S2 = 3 min S3 = 10% ED	3000	CW-CCW	150A	138
VNKPP040104	Motor T-80 24DC 800W w/ Relay	S2 = 3 min S3 = 10% ED	3400	CW-CCW	150A	136

● T-112



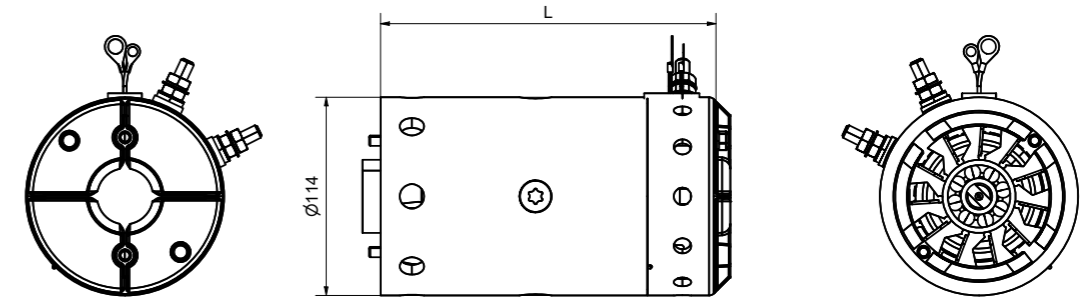
Reference	Description	Nominale Duty Cycle	Nominal Speed (rpm)	Rotation	Nominal Current	L (mm)
VNKPP040105	Motor T-112 12DC 1600W w/ Relay	S2 = 5 min S3 = 20% ED	2800	CCW	150A	179.8
VNKPP040105.6	MOTOR T112 24DC 1600W CCW C/RELE 150A	S2=3min S3=10%	2600	CW-CCW	150A	154,5
VNKPP040106	Motor T-112 24DC 2200W w/ Relay	S2 = 3,5 min S3 = 15% ED	2400	CCW	150A	154.3
VNKPP040107	Motor T-112 24DC 2200W w/ Relay	S2 = 8 min S3 = 20% ED	2900	CCW	150A	179.8
VNKPP040109	Motor T-112 12DC 2100W w/ Relay	S2 = 2,5 min S3 = 10% ED	2400	CCW	150A	171.3
VNKPP040111	MOTOR T112 48DC 2000W CCW C/Relay 200A	S2=3,5min S3=15%	2600	CW-CCW	150A	153,8

● T-125



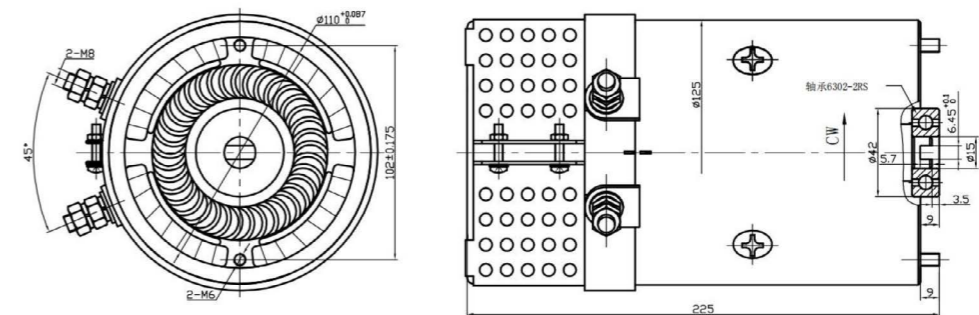
Reference	Description	Nominale Duty Cycle	Nominal Speed (rpm)	Rotation	Nominal Current	L (mm)
VNKPP040110	Motor T-125 24DC 3000W w/o Relay	S2 = 4 min S3 = 8% ED	2850	CCW	150A	216.5

● T-112 FAN



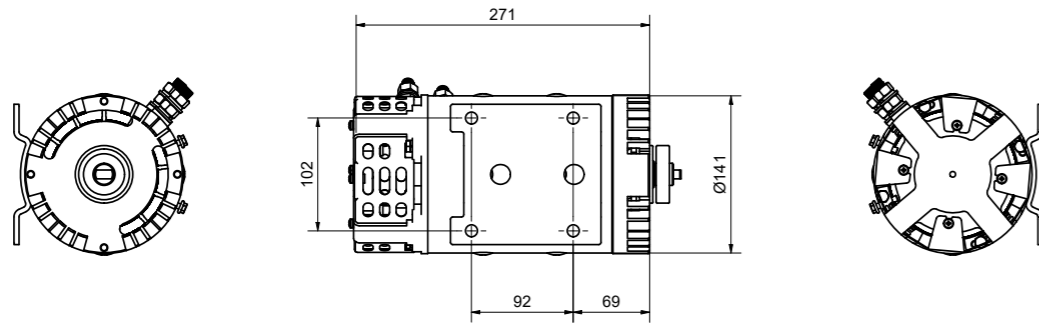
Reference	Description	Nominale Duty Cycle	Nominal Speed (rpm)	Rotation	Nominal Current	L (mm)
VNKPP040105.2	Motor Fan T-112 12DC 1600W w/ Relay	S2 = 12 min S3 = 10% ED	2800	CCW	150A	179.8
VNKPP040107.1	Motor Fan T-112 24DC 2200W w/ Relay	S2 = 8 min S3 = 20% ED	2900	CCW	150A	179.8
VNKPP040109.5	MOTOR VENT. T112 12DC 2100W CCW C/RELE 150A	S2=2,2min S3=7%	2400	CW-CCW	150A	192,3

● T-125 FAN



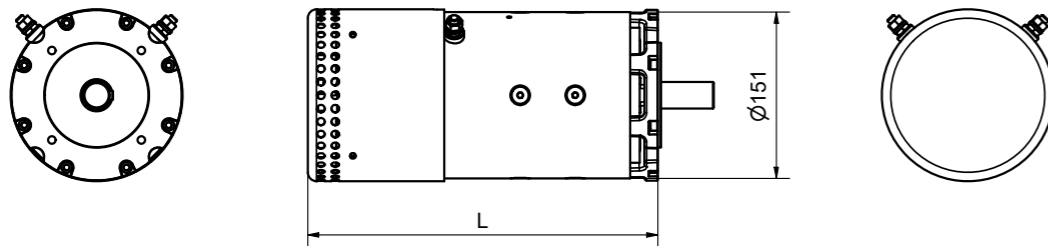
Reference	Description	Nominale Duty Cycle	Nominal Speed (rpm)	Rotation	Nominal Current	L (mm)
VNKPP040113	Motor Fan T-112 24DC 3000W w/o Relay	S2 = 12 min S3 = 10% ED	2800	CCW	120A	225
VNKPP040112.5	MOTOR VENT. T125 12DC 3000W CCW S/Relay	S2=4min S3=8%	2700	CW-CCW	150A	240

● T-141 FAN



Reference	Description	Nominale Duty Cycle	Nominal Speed (rpm)	Rotation	Nominal Current	L (mm)
VNKPP040119	MOTOR VENT. T141 24DC 4000W CCW S/Relay	S2=18min S3=26%	2300	CW-CCW	150A	271,5

● T-151 FAN



Reference	Description	Nominale Duty Cycle	Nominal Speed (rpm)	Rotation	Nominal Current	L (mm)
VNKPP040114	Motor Fan T-151 12DC 2500W w/o Relay	S2 = 7 min S3 = 15% ED	1700	CCW	298A	318
VNKPP040116	Motor Fan T-151 24DC 3000W w/o Relay	S2 = 15 min S3 = 20% ED	1700	CCW	190A	318

● CONNECTION KIT



Reference	Type
VNKPP040601	Kit connection T-80
VNKPP040602	Kit connection T-112/125
VNKPP040603	Kit connection T-141/151

● RELAYS FOR DC MOTOR



Reference	Type	Amp. (A)	Voltage (V)
VNKPP040606	Relay 12 DC 150A	150	12
VNKPP040607	Relay 24 DC 150A	150	24
VNKPP040608	Relay 48 DC 150A	150	48
VNKPP040609	Relay 12 DC 300A	300	12
VNKPP040610	Relay 24 DC 300A	300	24

● DC MOTOR PROTECTION COVER



Reference	Type
VNKPP040611	Cover DC motor T-112

PLUGS BODY CENTRAL

GROUPS K0,K1

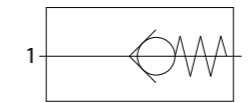
ASS. CODE
2

Reference	Dimension	Symbols	Housing
VNKPP050101			ACDES V
VNKPP050102			CDE
VNKPP050103			CDE
VNKPP050104			CDE
VNKPP050105			CDE

CHECK VALVES

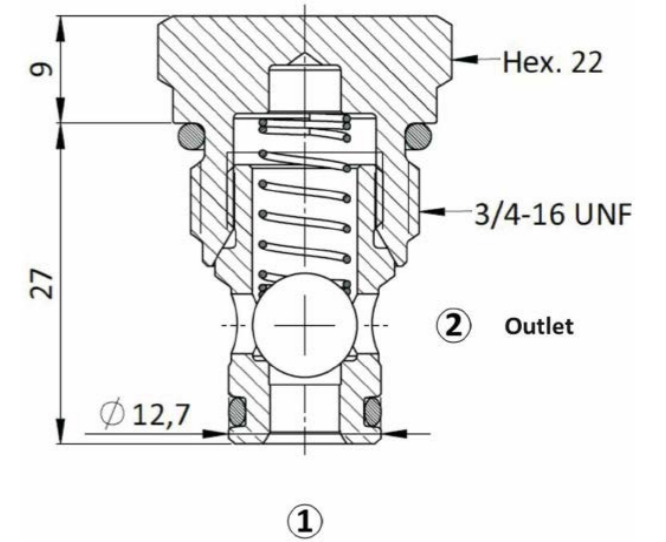
GROUPS K0,K1

VNKPP050201.2/.3



MAIN FEATURES

	Max pressure	420 bar
	Max flow	30 l/min.
	Weight	0,055 kg
	Cracking pressure	2,1 bar

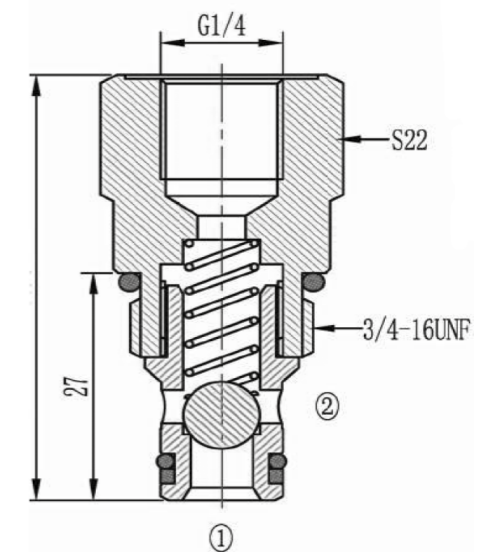


VNKPP050202



MAIN FEATURES

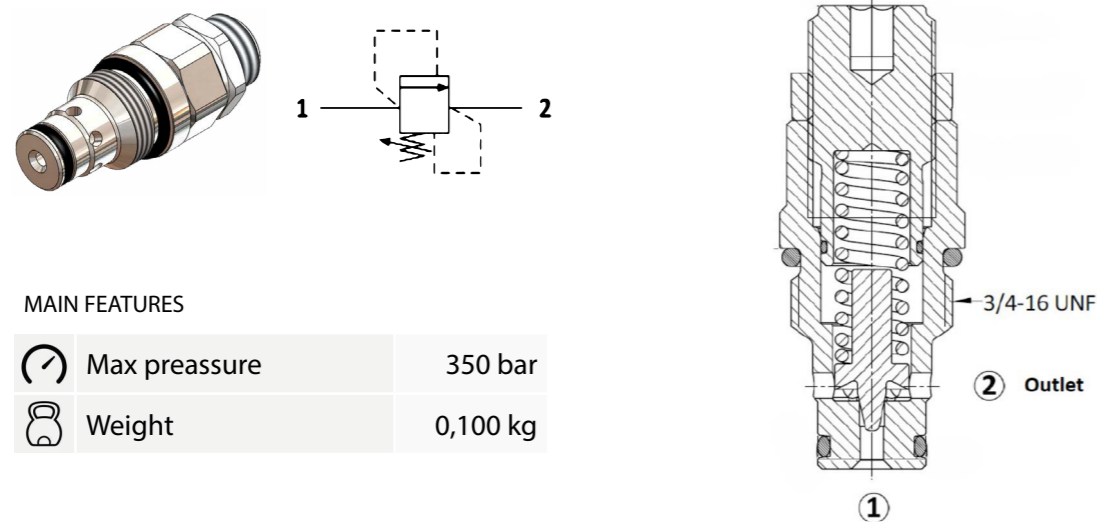
	Max pressure	250 bar
	Max flow	20 l/min.
	Weight	0,065 kg
	Cracking pressure	0.7 bar



CHECK VALVES

Reference	P (bar)	Flow (l/min)	Weight	Checking pressure	Ass. Code
VNKPP050201.2	420	30	0.055	0,5	17
VNKPP050203	420	30	0.055	1.5	17
VNKPP050202	250	20	0.065	0.5	17

RELIEF VALVES



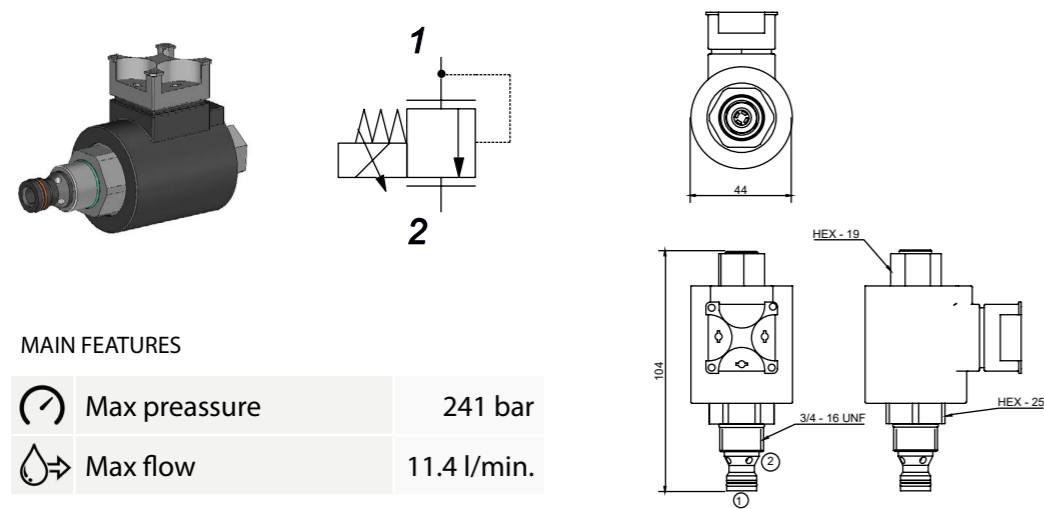
MAIN FEATURES

	Max pressure	350 bar
	Weight	0,100 kg

RELIEF VALVES GROUP K0 & K1

Reference	Flow (L/min)	Working Range (bar)
VNKPP050301	10 (L/min)	5 - 40
VNKPP050302	25 (L/min)	10 - 160
VNKPP050303	10 (L/min)	50 - 210
VNKPP050304	25 (L/min)	100 - 350
VNKPP050305	30 (L/min)	55-180
VNKPP050306	30(L/min)	120-300

● PROPORTIONAL EMERGENCY (GROUPS K0, K1)



MAIN FEATURES

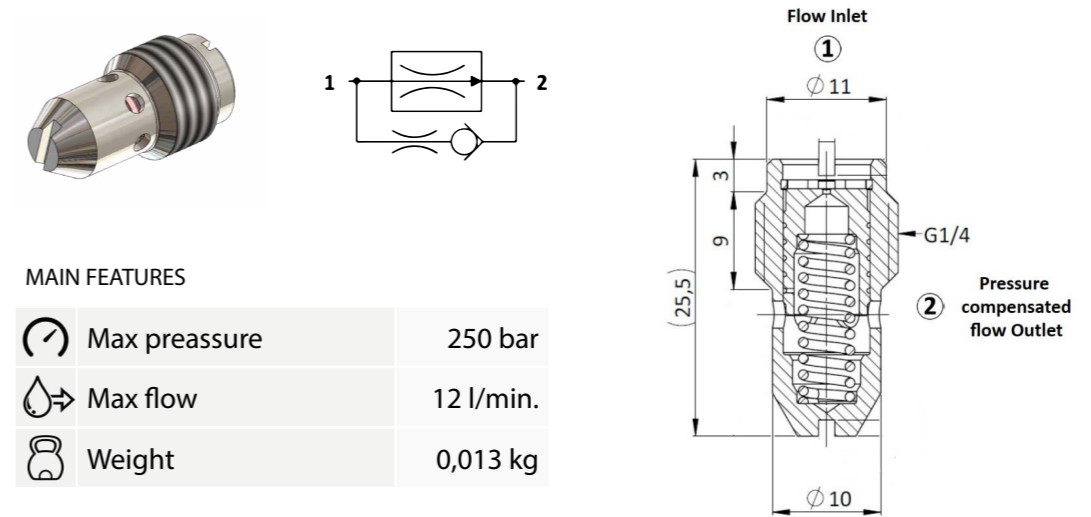
	Max pressure	241 bar
	Max flow	11.4 l/min.

Reference	Q (l/m)	Working range (bar)	Voltatge
VNKPP050712	11.4	0-138	24 D.C.

FLOW REGULATOR

GROUPS K0,K1

● FIXED COMPENSATED FLOW REGULATOR THREADED



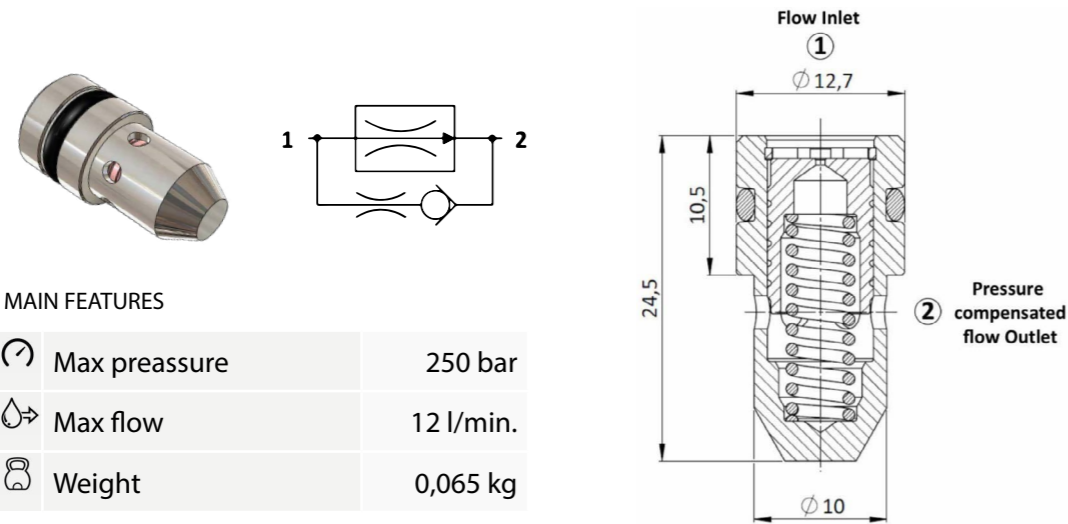
MAIN FEATURES

	Max pressure	250 bar
	Max flow	12 l/min.
	Weight	0,013 kg

COMPENSATED FLOW REGULATOR (Group K0 & K1)

Reference	Q (L/min)	Reference	Q (L/min)
VNKPP050401	1,2	VNKPP050405	6
VNKPP050401.2	1.6	VNKPP050406	7
VNKPP050402	3	VNKPP050407	9.5
VNKPP050403	4	VNKPP050408	12
VNKPP050404	5		

● **FIXED COMPENSATED FLOW REGULATOR INSERTED**



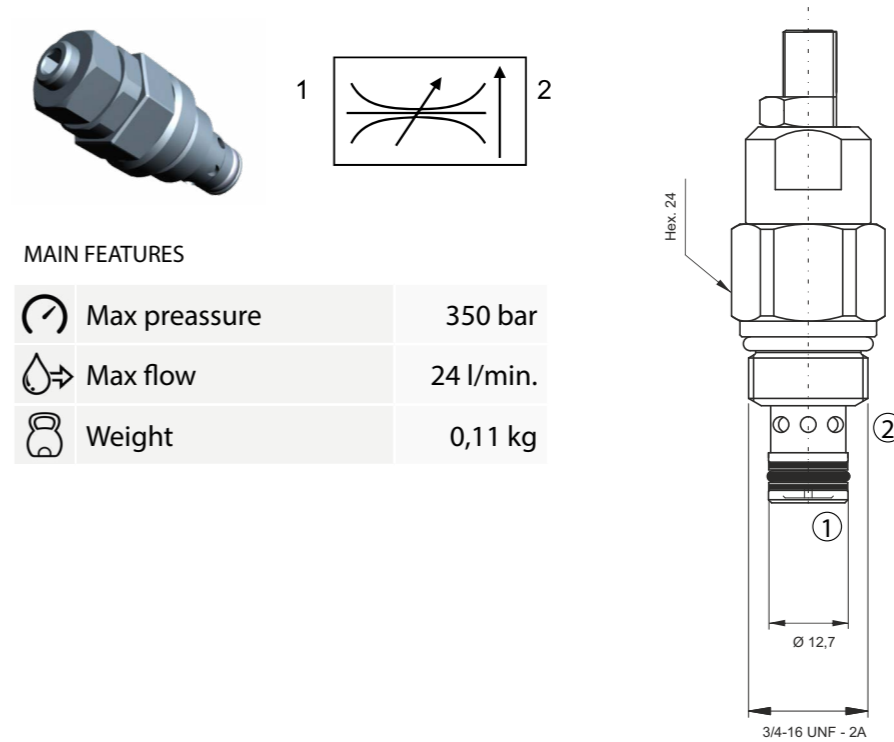
MAIN FEATURES

	Max pressure	250 bar
	Max flow	12 l/min.
	Weight	0,065 kg

COMPENSATED FLOW INSERTED (Group K0 & K1)

Reference	Q (L/min)	Reference	Q (L/min)
VNKPP050411	1,2	VNKPP050415	6
VNKPP050411.5	1.5	VNKPP050416	7
VNKPP050412	3	VNKPP050419	9.5
VNKPP050413	4	VNKPP050418	12
VNKPP050414	5		

● **3/4-16 UNF COMPENSATED FLOW REGULATOR**



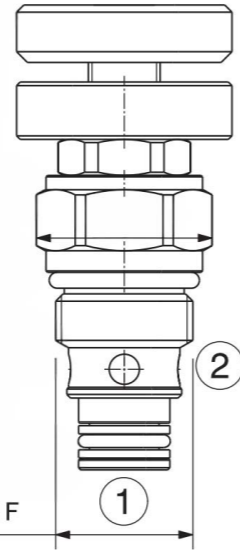
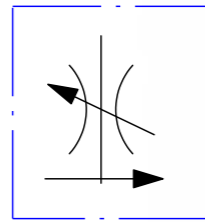
MAIN FEATURES

	Max pressure	350 bar
	Max flow	24 l/min.
	Weight	0,11 kg

RANGE AVAILABLE

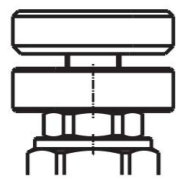
Reference	Controlled flow at 100 bar ± 10% l/min
VNKPP050419	0.6 ÷ 2.2
VNKPP050420	1.3 ÷ 5.1
VNKPP050421	4 ÷ 14.4
VNKPP050422	7.2 ÷ 24

● FLOW REGULATOR 3/4-16 UNF



3 / 4 - 16 UNF

ADJUSTMENTS	
VNKPP050426	VNKPP050427



Handknob and locknut



Leakproof hex socket screw

MAIN FEATURES

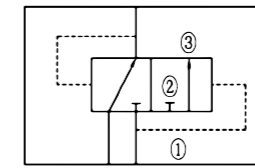
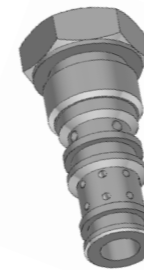
	Max pressure	250 bar
	Max flow	30 l/min.
	Installation torque	27-30 Nm

FLOW REGULATOR 3/4-16 UNF

Reference	P (bar)	Flow (l/m)	Install Torque (Nm)	Handknob	Ass. Code
VNKPP050426	350	30	27-30	YES	19
VNKPP050427	350	30	27-30	NO	3

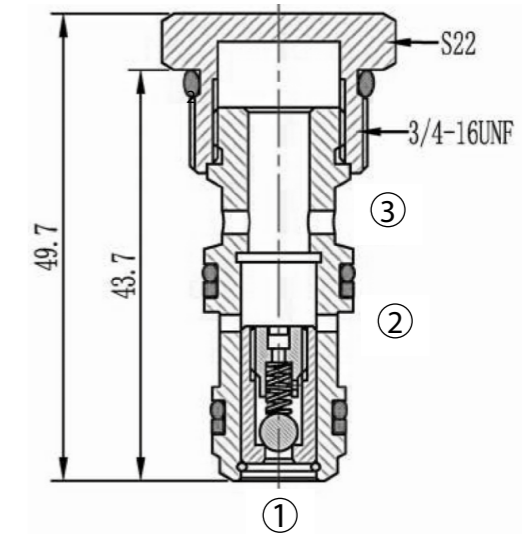
PILOTED VALVE

3/4 " UNF



MAIN FEATURES

	Operating pressure	250 bar
	Internal leakage	5 drops/min
	Temperature	-40°C->+120°C



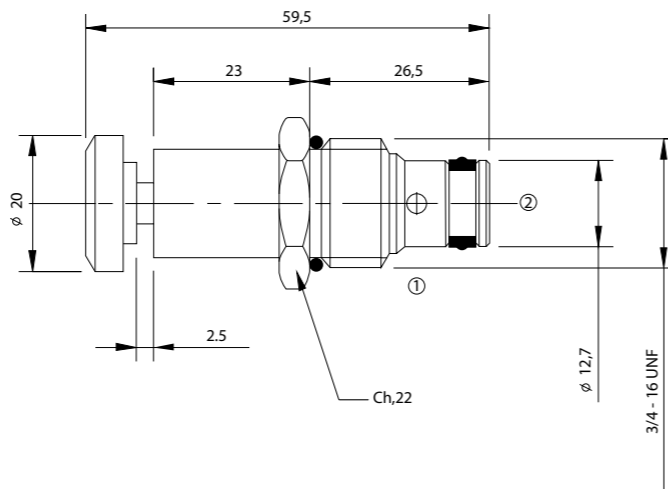
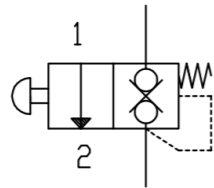
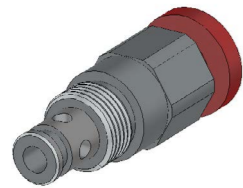
PILOTED VALVE 3/4" UNF

Reference	Pressure (bar)	Internal leakage (drop/min)
VNKPP050504	240	5

MANUAL VALVES

3/4" UNF

● VNKPP050501 (Manual Emergency Valves)

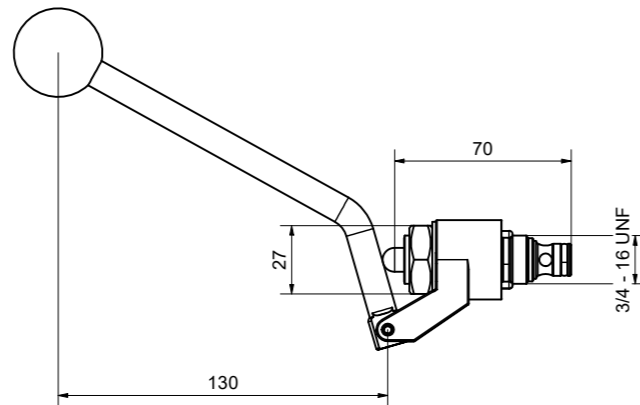


The manual emergency valves open the passage of oil in a hydraulic circuit by a manual command (blocked flow in both directions).

MAIN FEATURES

	Max pressure	320 bar
	Max flow	25 l/min. 1 -> 2
	Weight	0,15 kg

● MANUAL VALVE W/ LEVEL

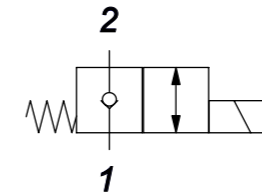


MAIN FEATURES

	Max pressure	250 bar
	Max flow	20 l/min.

SOLENOIDS 2/2

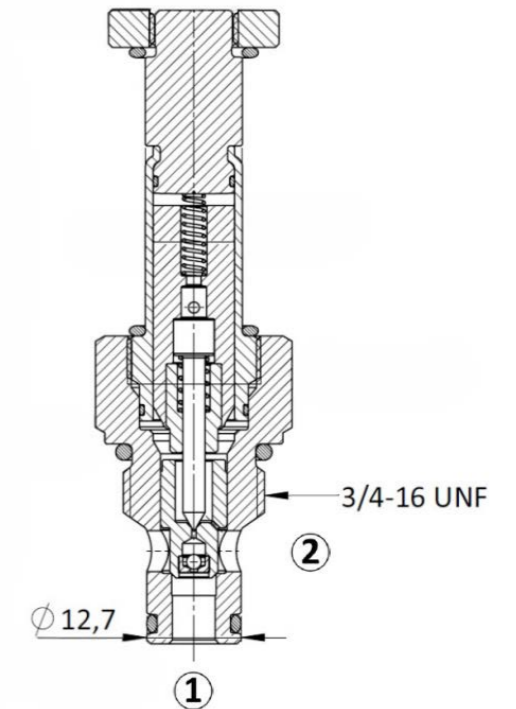
● GROUPS K0, K1



SAE Cartridge - 350 bar
NC Single Lock Pilot Operated
Poppet Type
Power: 18/22 wats

MAIN FEATURES

	Max pressure	350 bar
	Max flow	40 l/min.
	Weight	0,15 kg

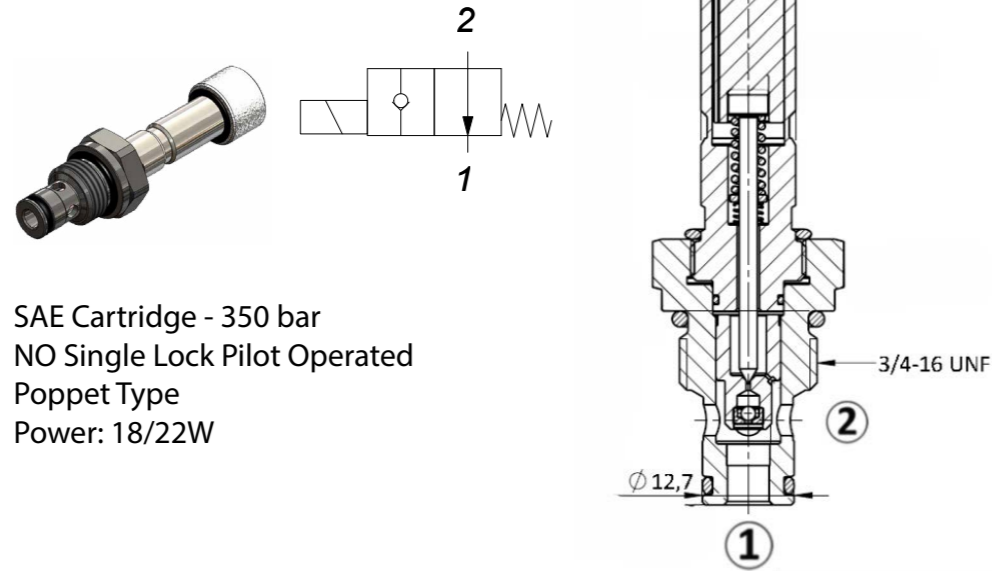


SOLENOIDS 2/2 GROUPS K0, K1

Reference	Type	Q (l/m)	Max P (bar)	Power (W)	
VNKPP050601	N.C.	40	350	18/22	3/4 UNF
VNKPP050604	N.C. + Emergency	40	350	18/22	3/4 UNF
VNKPP050604.1	N.C. + Emergency	20	250	18/22	3/4 UNF
VNKPP050609	N.C.	30	207	18/22	3/4 UNF *

* ROUND COIL

● GROUPS K0, K1



SAE Cartridge - 350 bar
NO Single Lock Pilot Operated
Poppet Type
Power: 18/22W

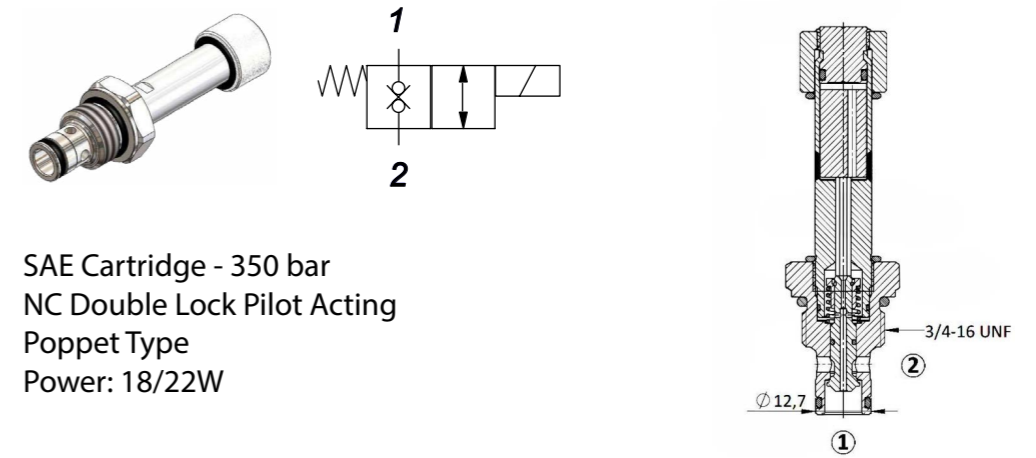
SOLENOIDS 2/2 GROUPS K0, K1

Reference	Type	Q (l/m)	Max P (bar)	Power (W)	⚡
VNKPP050602	N.O.	40	350	18/22	3/4 UNF
VNKPP050603	N.O. + Emergency	40	350	18/22	3/4 UNF
VNKPP050612	N.O.	30	207	18/22	3/4 UNF *

* ROUND COIL

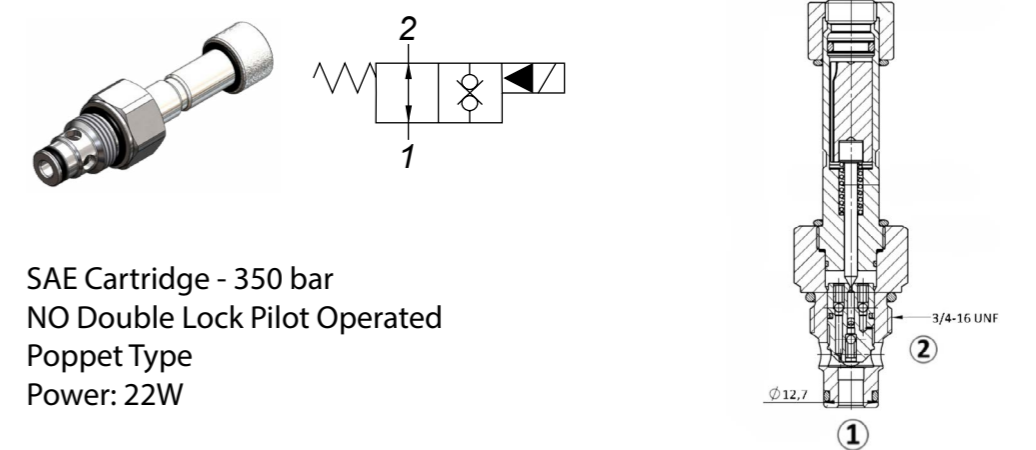
● DOUBLE CHECK VALVE (With Emergency Groups K0, K1)

○ N.C.



SAE Cartridge - 350 bar
NC Double Lock Pilot Acting
Poppet Type
Power: 18/22W

○ N.O.

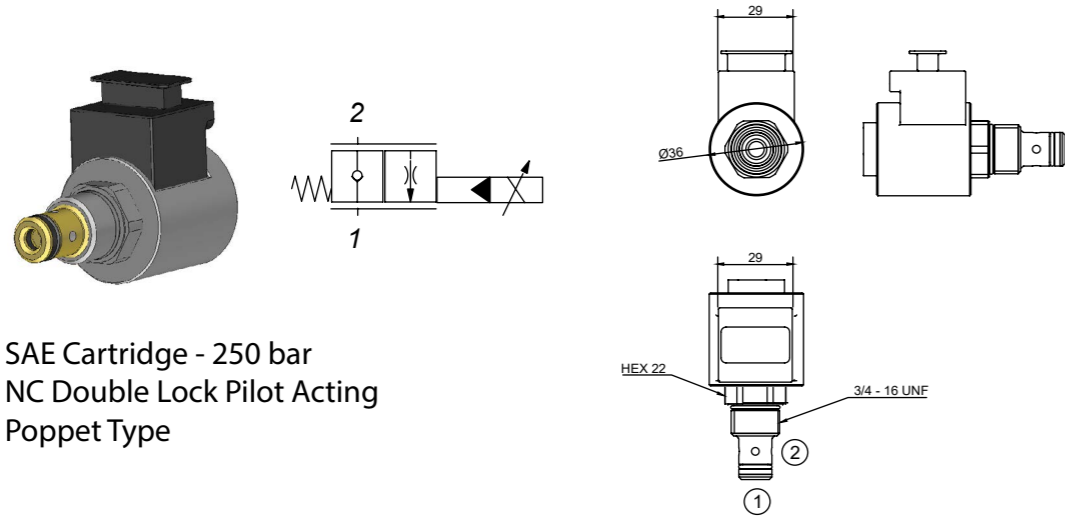


SAE Cartridge - 350 bar
NO Double Lock Pilot Operated
Poppet Type
Power: 22W

SOLENOIDS 2/2 DOUBLE CHECK W/EMER. GROUPS K0, K1


Reference	Type	Q (l/m)	Max P (bar)	Power	⚡
VNKPP050605	N.C. + Emergency	15	250	18/22W	3/4 UNF
VNKPP050606	N.O. + Emergency	40	350	22W	3/4 UNF
VNKPP050607	N.C. + Emergency	30	250	22W	3/4 UNF
VNKPP050608	N.C. + Emergency	40	350	18/22W	3/4 UNF

● PROPORTIONAL W/O EMERGENCY



SAE Cartridge - 250 bar
NC Double Lock Pilot Acting
Poppet Type

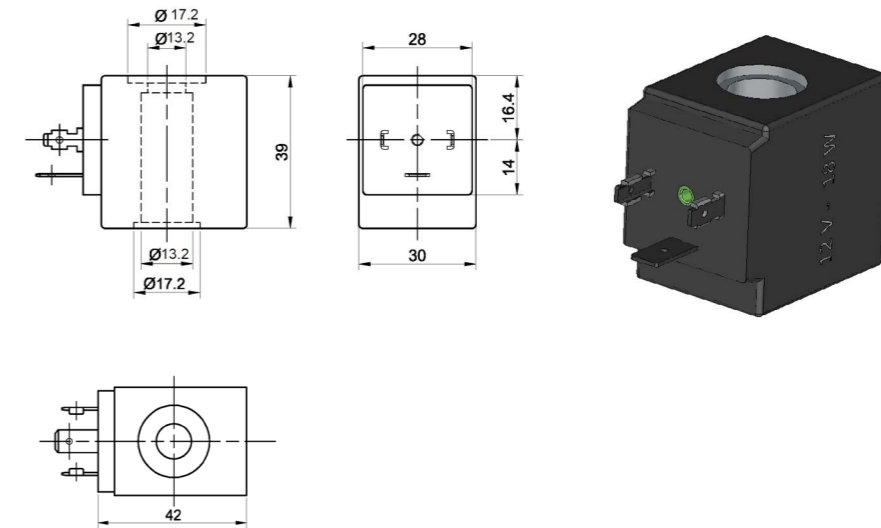
SOLENOIDS 2/2 PROPORTIONAL W/O EMERG. GROUPS K0, K1

Reference	Type	Q (l/m)	Voltage	
VNKPP050701	N.C.	25	12 dc	3/4 UNF
VNKPP050702	N.C.	25	24 dc	3/4 UNF

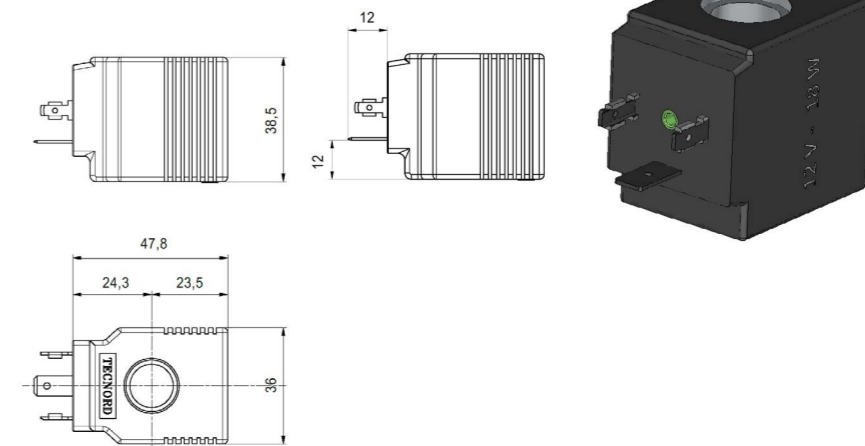
COILS

GOUPS K0, K1

● VNKPP05080X



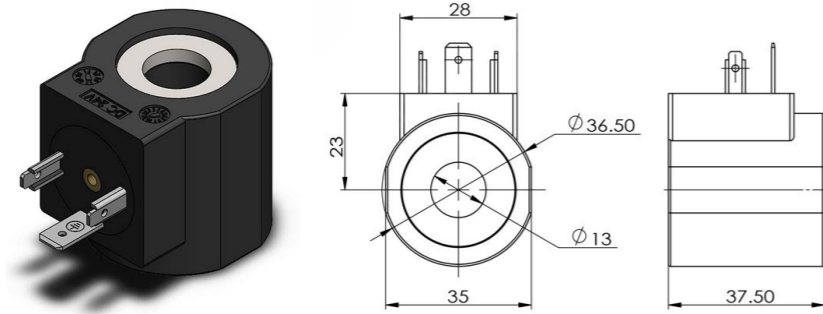
● VNKPP05090X RECTANGULAR



FILTERS

GOUPS K0, K1

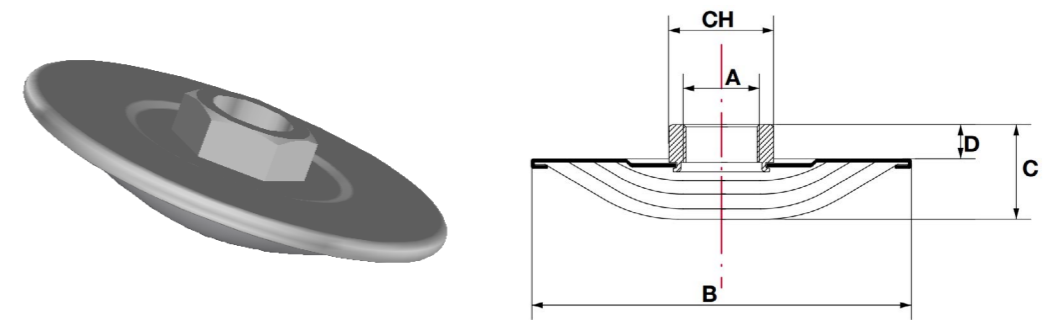
● VNKPP05090X ROUND



COIL. GROUPS K0, K1

Reference		Watt	Voltage	Coil
VNKPP050801	13	18	12 DC	Rectangular
VNKPP050802	13	18	24 DC	Rectangular
VNKPP050803	13	18	110 RAC	Rectangular
VNKPP050804	13	18	220 RAC	Rectangular
VNKPP050901	13	22	12 DC	Rectangular
VNKPP050902	13	22	24 DC	Rectangular
VNKPP050903	13	22	26DC	Rectangular
VNKPP050904	13	22	110 RAC	Rectangular
VNKPP050905	13	22	220 RAC	Rectangular
VNKPP050908	13	22	12 DC	Round
VNKPP050909	13	22	24 DC	Round
VNKPP050909.5	13	22	220 RAC	Round
VNKPP050910	13	18	12 DC	Round
VNKPP050911	13	18	24 DC	Round
VNKPP050912	13	18	220 RAC	Round
VNKPP050913	13	18	24 VAC	Round
VNKPP050914	13	18	24 V RAC	Round

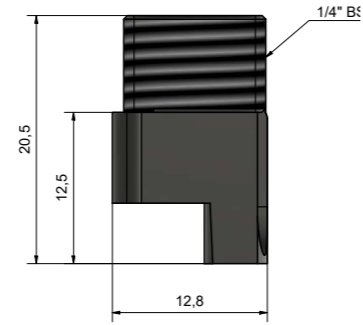
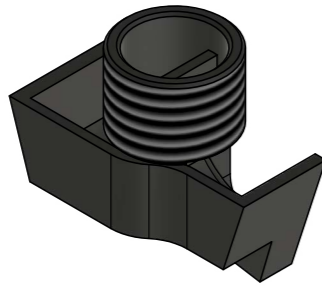
● SUCTION FILTERS (GROUPS K0,K1)



Reference	A	B	C	D	CH	Filtering Surface	Flow
	(mm)	(mm)	(mm)	(mm)	(mm)	(cm ²)	(l/min)
VNKPP060101	3/8	63	20	8	22	120	13
VNKP060102	3/8	80	21	7	22	100	14

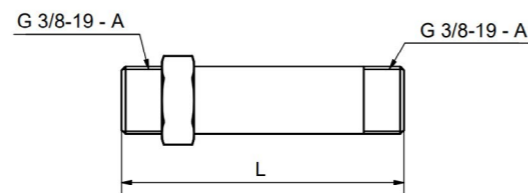
● **VNKPP060103**

Relief valve return filter
To be mounted in cavity Tr



It reduces foam and noise when relief valve is laminating.
Recommended for all vertical mounting tanks.

● **SUCTION TUBE (GROUPS K0,K1)**

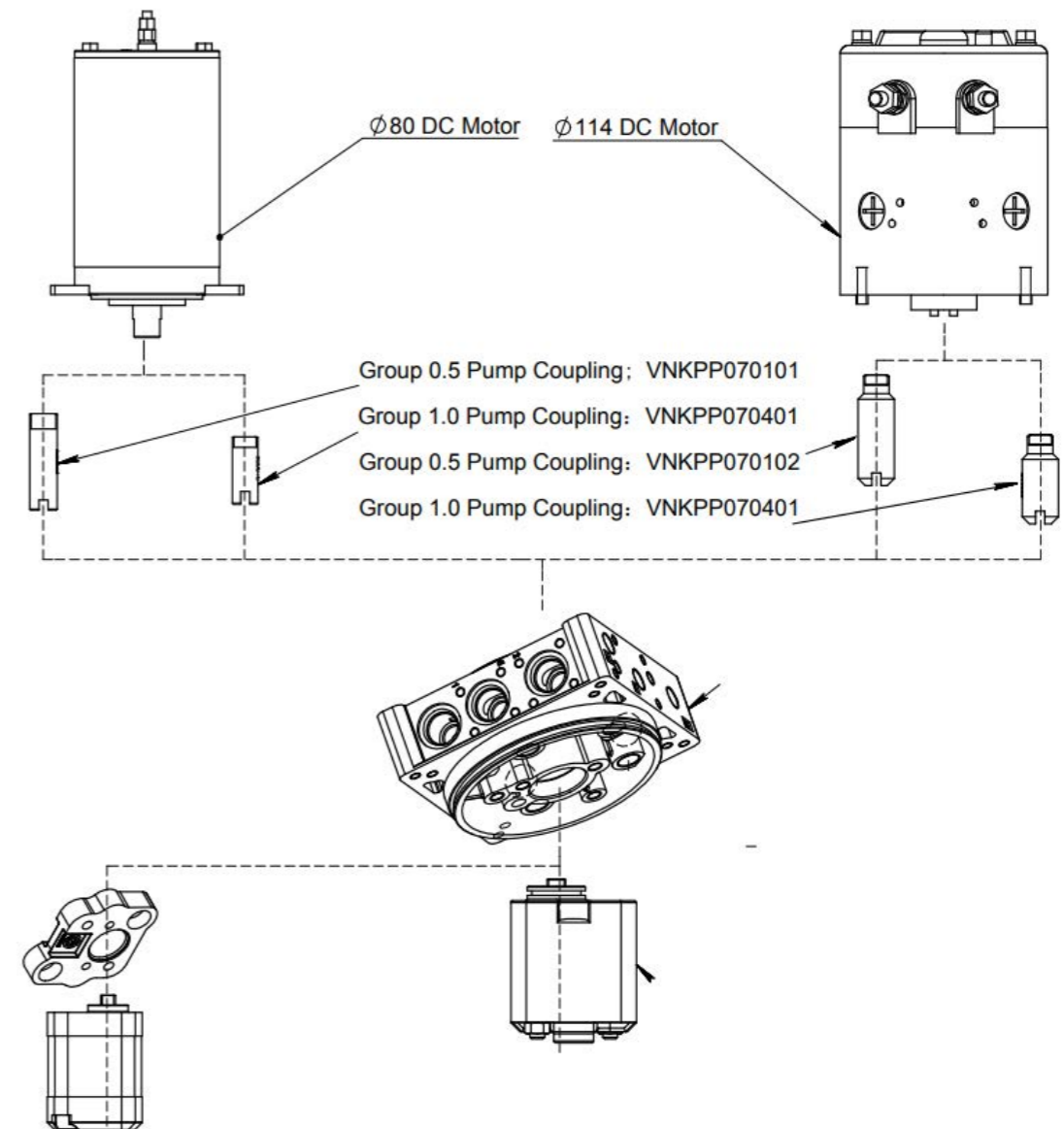


SUCTION TUBE GROUP K1

Reference	L (mm)	Reference	L(mm)
VNKPP060301	35	VNKPP060307	175
VNKPP060302	70	VNKPP060308	205
VNKPP060303	80	VNKPP060309	240
VNKPP060304	100	VNKPP060310	315
VNKPP060305	130	VNKPP060311	400
VNKPP060306	160		

COUPLINGS

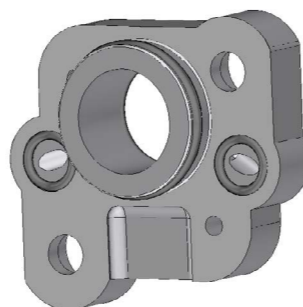
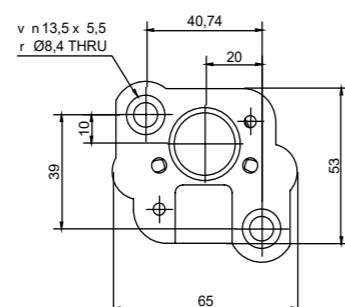
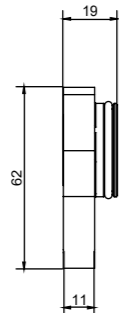
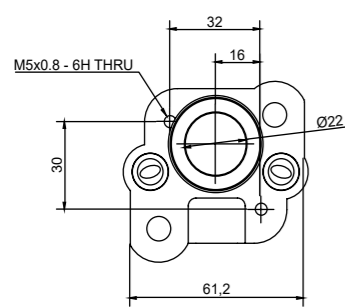
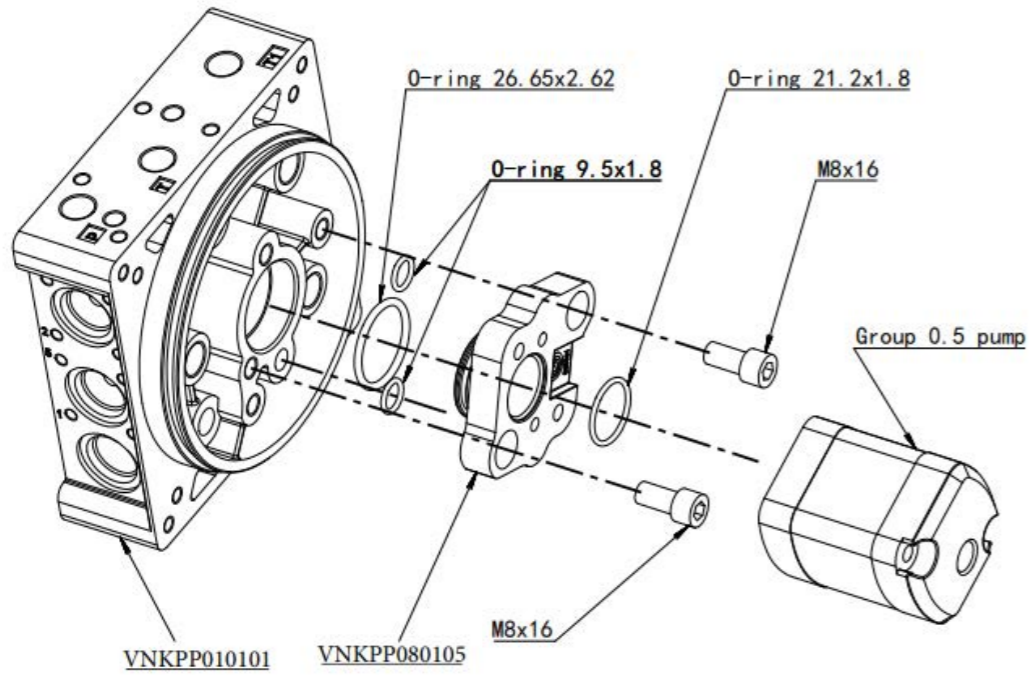
● **DC MOTORS PUMPS ASSEMBLY GUIDE**



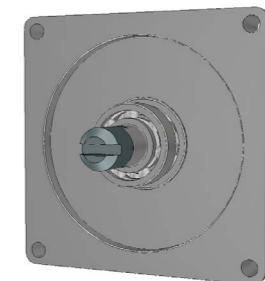
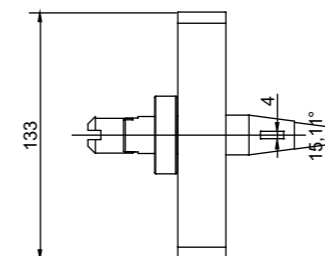
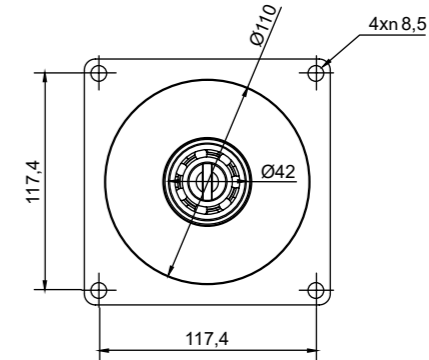
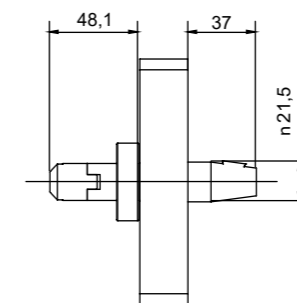
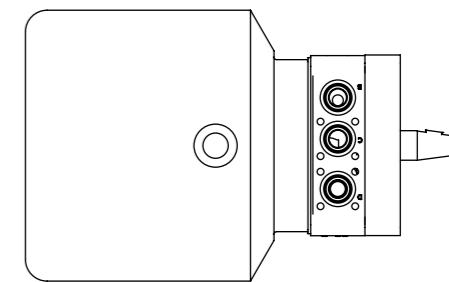
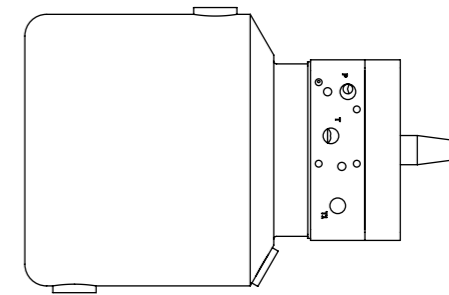
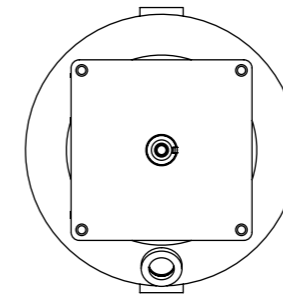
● MANIFOLD AND GROUP 0.5 PUMP ASSEMBLY

COUPLING PULLEY

● VNKPP080302

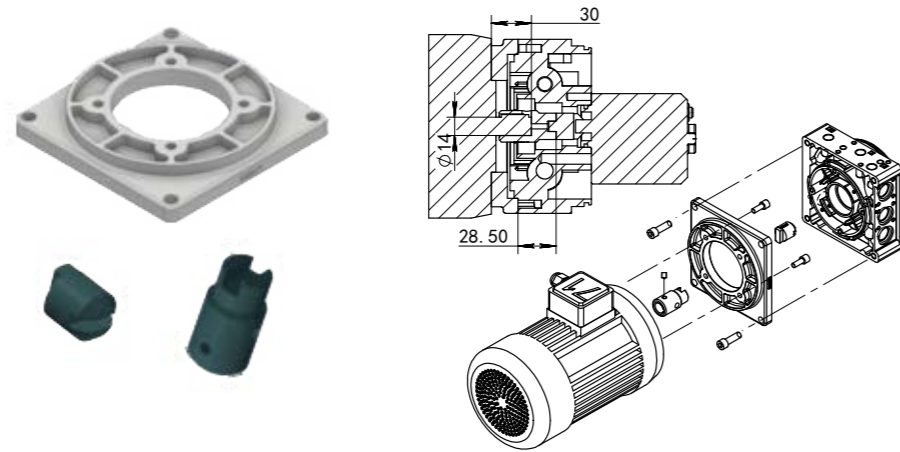


Model	Weight/kg
VNKPP080105	0.07



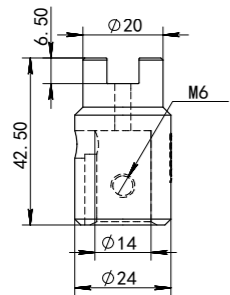
● COUPLING T-71

Mounting kit for frame 71 B14 AC Motors

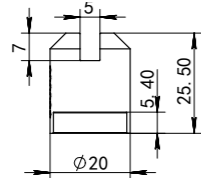


COUPLINGS

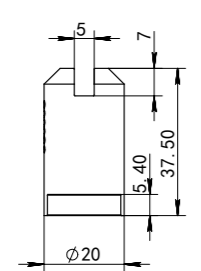
MOTOR SIDE
VNKPP070502



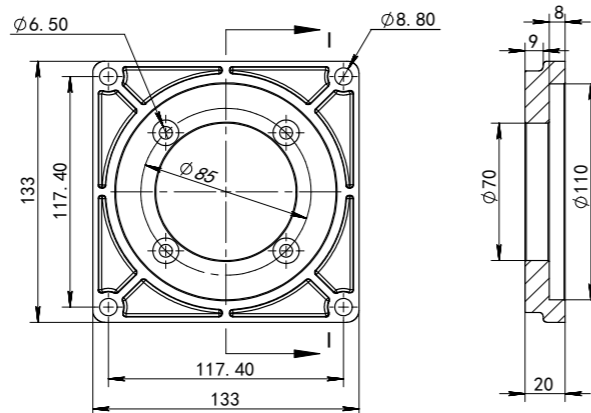
GROUP 1.0 PUMP SIDE
VNKPP070501



GROUP 0.5 PUMP SIDE
VNKPP070103



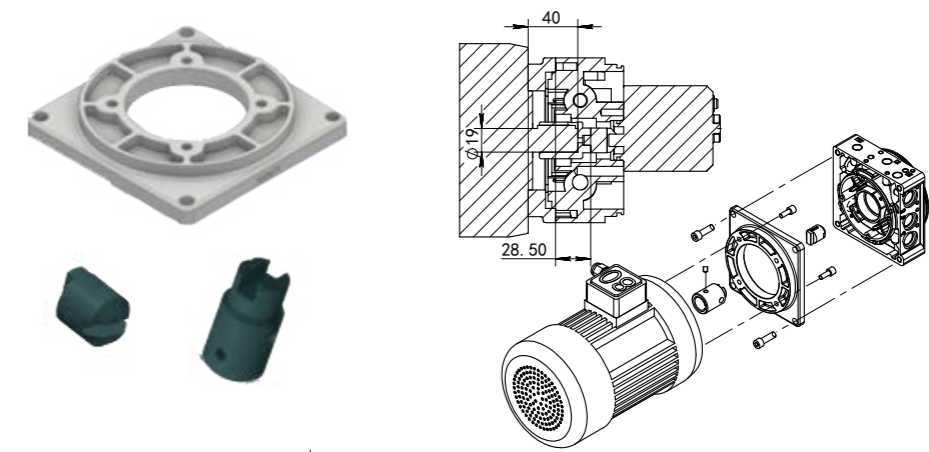
ALUMINIUM FLANGE: VNKPP080202



Description	Part Number	Weight (kg)
Motor side Coupling	VNKPP070502	0.095
Group 0.5 Pump Side Coupling	VNKPP070103	0.080
Group 1.0 Pump Side Coupling	VNKPP070501	0.050
Aluminium Flange	VNKPP080202	0.30
Motor Flange Assembly Screw	4X DIN 912 M6X16	0.030
Manifold Flange Assembly Screw	4X DIN 912 M8X25	0.060
Coupling Screw	DIN 912 M6X8	-

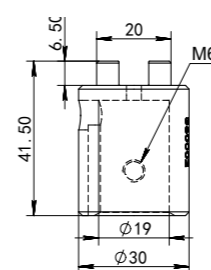
● COUPLING T-80

Mounting kit for frame 80 B14 AC Motors

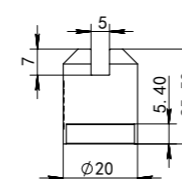


COUPLINGS

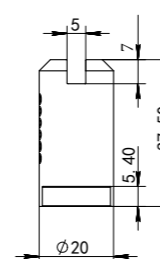
MOTOR SIDE
VNKPP070503



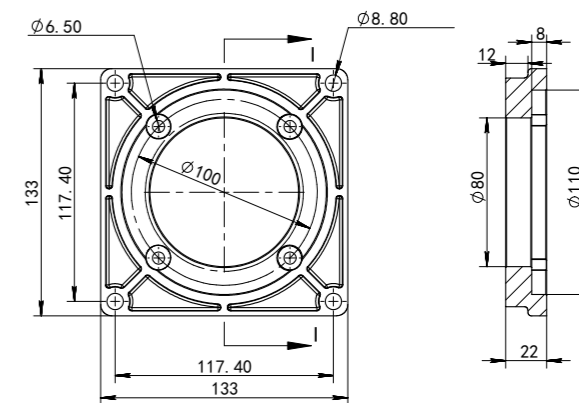
GROUP 1.0 PUMP SIDE
VNKPP070501



GROUP 0.5 PUMP SIDE
VNKPP070103



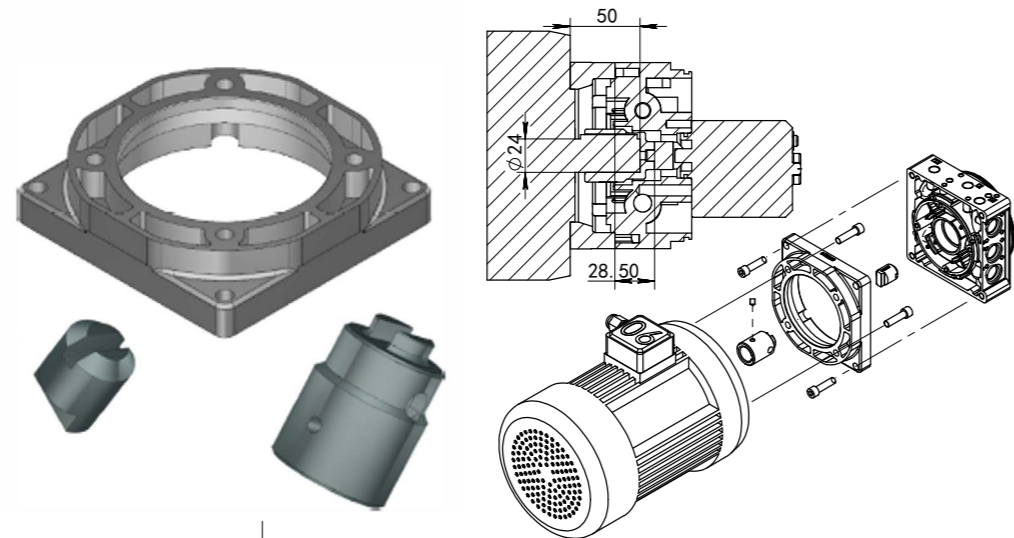
ALUMINIUM FLANGE: VNKPP080203



Description	Part Number	Weight (kg)
Motor side Coupling	VNKPP070503	0.125
Group 0.5 Pump Side Coupling	VNKPP070103	0.080
Group 1.0 Pump Side Coupling	VNKPP070501	0.050
Aluminium Flange	VNKPP080203	0.310
Motor Flange Assembly Screw	4X DIN 912 M6X16	0.030
Manifold Flange Assembly Screw	4X DIN 912 M8X25	0.060
Coupling Screw	M6X8	-

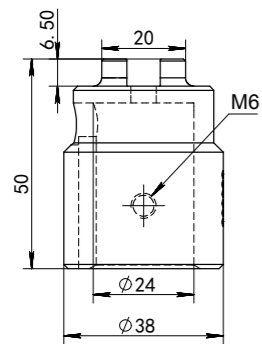
● COUPLING T-90

MOUNTING KIT FOR FRAME 90 B14 AC MOTORS

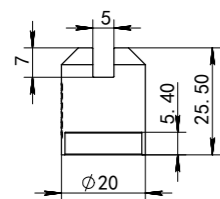


COUPLINGS

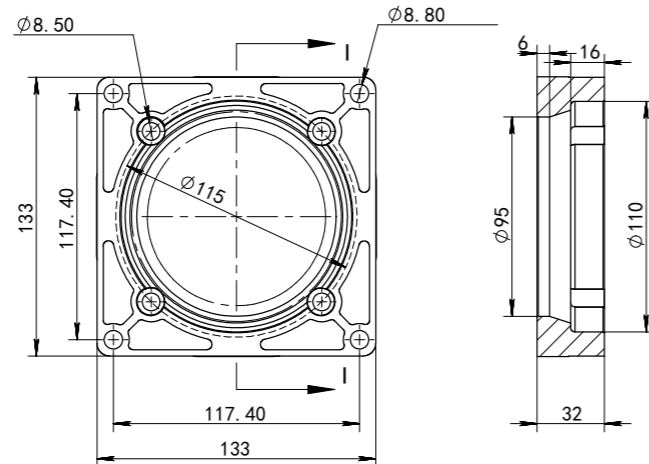
MOTOR SIDE
VNKPP070504



GROUP 1.0 PUMP SIDE
VNKPP070501



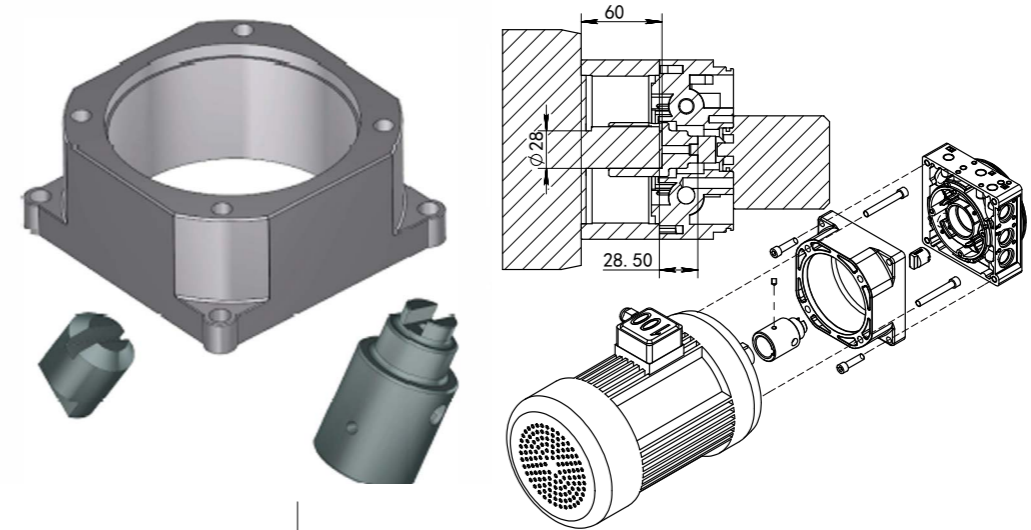
ALUMINIUM FLANGE: VNKPP080204



Description	Part Number	Weight (kg)
Motor side Coupling	VNKPP070504	0.220
Group 1.0 Pump Side Coupling	VNKPP070501	0.050
Aluminium Flange	VNKPP080204	0.390
Motor Flange Assembly Screw	4X DIN 912 M8X16	0.050
Manifold Flange Assembly Screw	4X DIN 912 M8X30	0.065
Cumpling Screw	DIN 912 M6X8	-

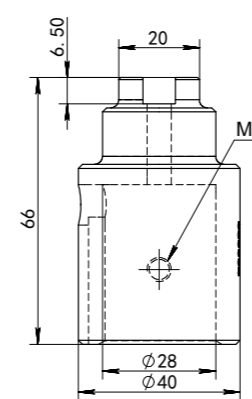
● COUPLING T-100/112

MOUNTING KIT FOR FRAME 100/112 B14 AC MOTORS

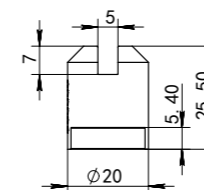


COUPLINGS

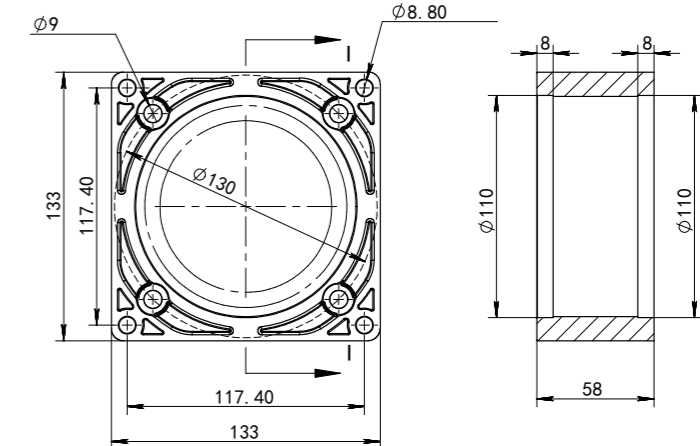
MOTOR SIDE
VNKPP070505



GROUP 1.0 PUMP SIDE
VNKPP070501



ALUMINIUM FLANGE: VNKPP080205



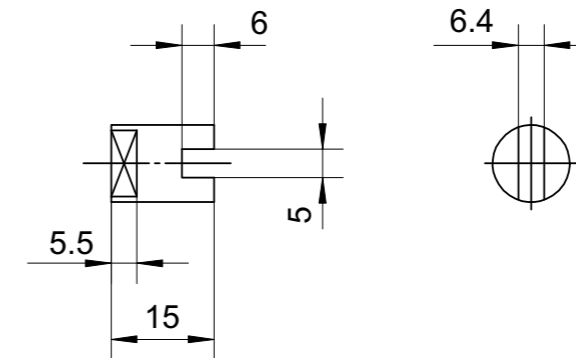
Description	Part Number	Weight (kg)
Motor Side Coupling	VNKPP070504	0.310
Group 1.0 Pump Side Coupling	VNKPP070501	0.050
Aluminium Flange	VNKPP080205	0.700
Motor Flange Assembly Screw	4X DIN 912 M8X55	0.125
Manifold Flange Assembly Screw	4X DIN 912 M8X30	0.065
Cumpling Screw	DIN M6X8	-

COUPLINGS GROUP K1

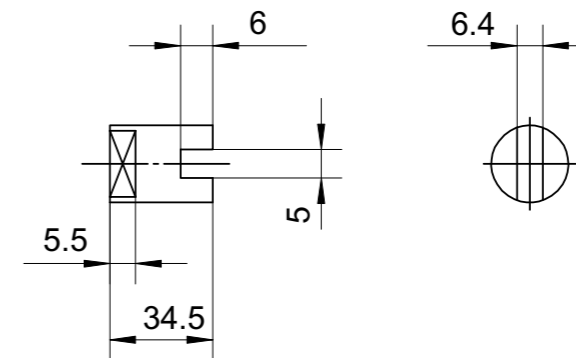
Reference	Type	HP (cv)
VNKPP070401	T-80 DC	-
VNKPP070402	T-112 DC	-
VNKPP070501	T-71...T-112 AC Pump	-
VNKPP070502	T-71	0.33...0.5
VNKPP070503	T-80	0.75...1
VNKPP070504	T-90	1.5...2
VNKPP070505	T-100...T-1125 AC	3...5.5

● COUPLINGS AND FLANGES GROUP K0

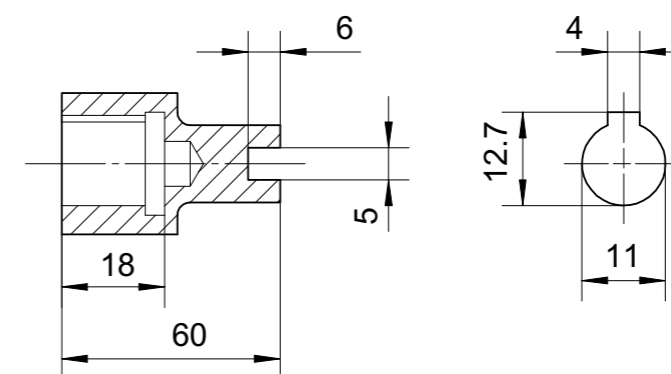
○ VNKPP070201



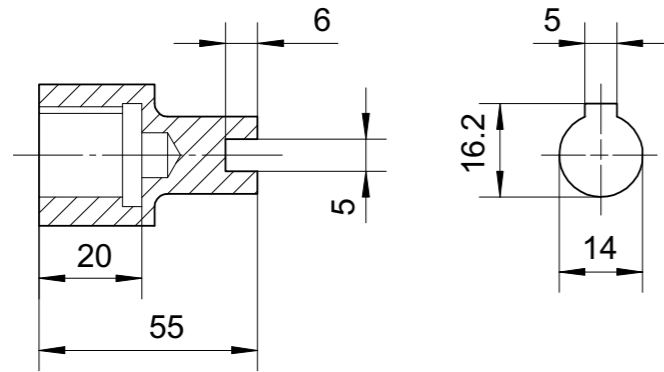
○ VNKPP070202



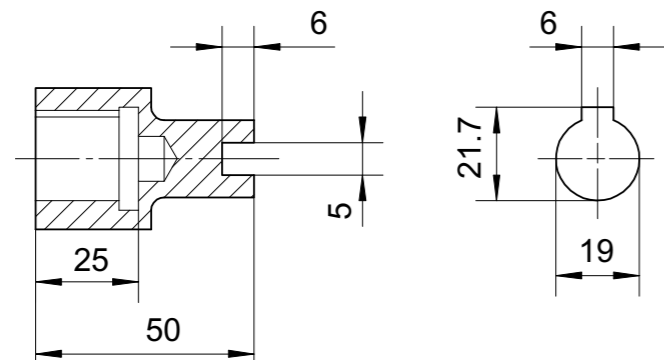
○ VNKPP070203



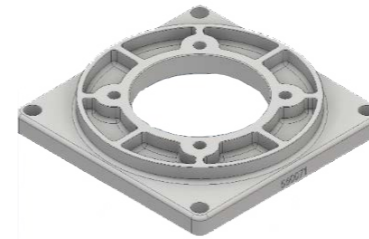
○ VNKPP070204



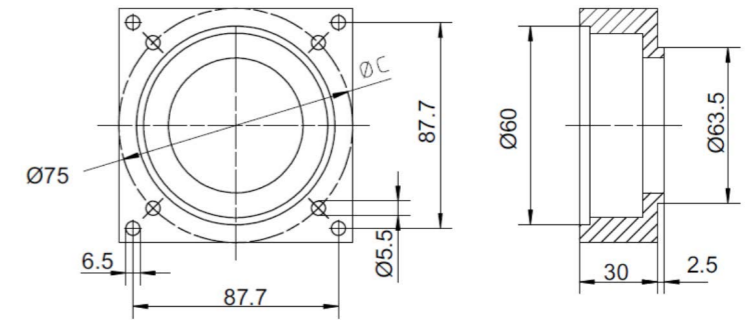
○ VNKPP070205



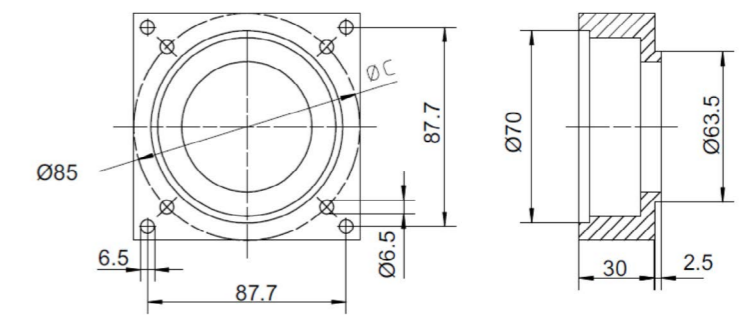
● FLANGES GROUP K0



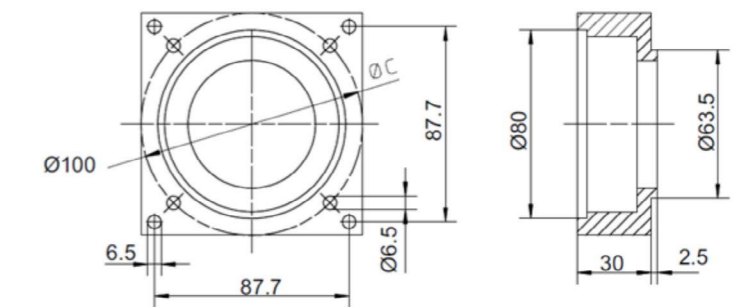
○ VNKPP080102



○ VNKPP080103



○ VNKPP080104

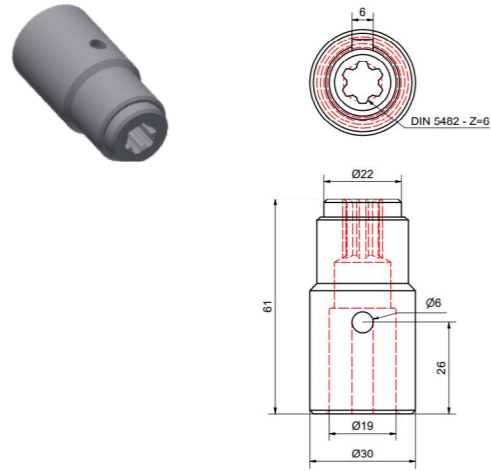


COUPLING GROUP K0

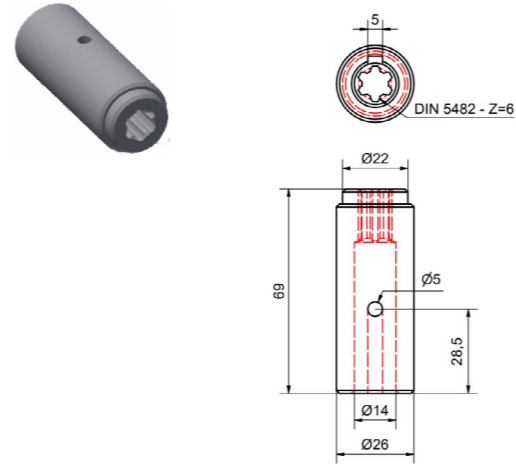
Reference	Type	HP (cv)
VNKPP070201	T-80 DC	-
VNKPP070202	T-112 DC	-
VNKPP070203	T-63 AC	0.16...0.25
VNKPP070204	T-71 AC	0.33...0.5
VNKPP070205	T-80 AC	0.75...1

● COUPLINGS SPLINED GROUP K1

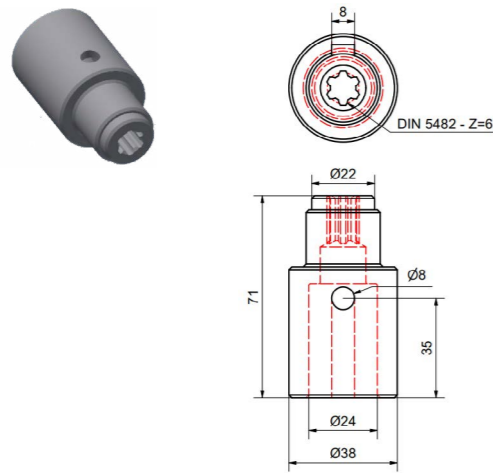
○ VNKPP070506



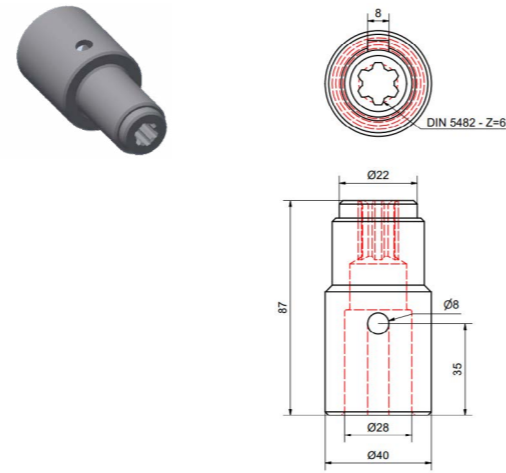
○ VNKPP070507



○ VNKPP070508



○ VNKPP070509

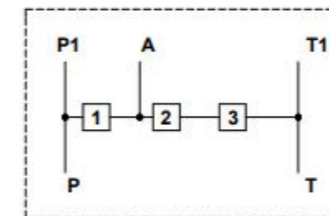
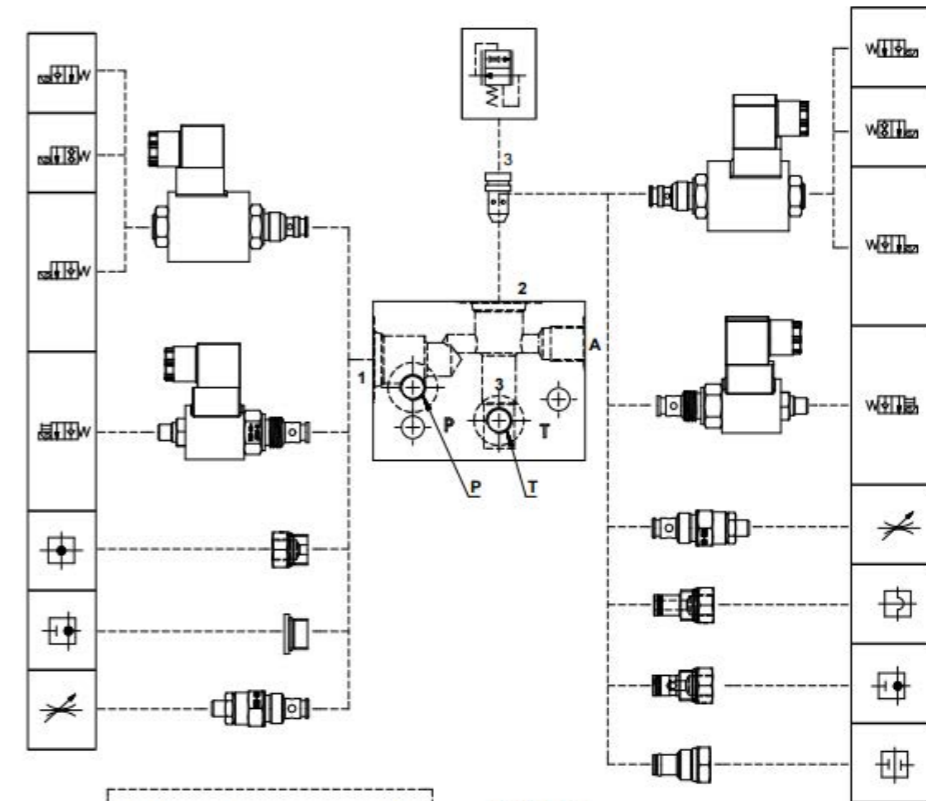
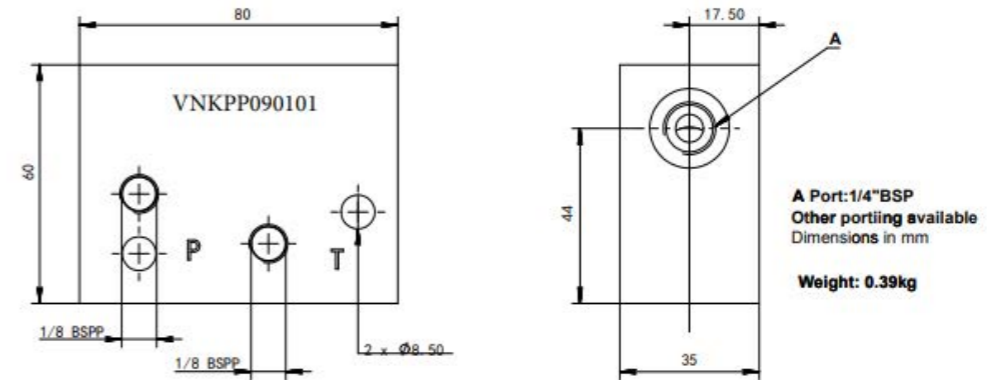


COUPLING SPLINED GROUP K1

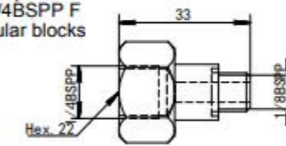
Reference	Type	HP (cv)
VNKPP070506	T-71 AC	0.33...0.5
VNKPP070507	T-80 AC	0.75...1
VNKPP070508	T-90 AC	1.5...2
VNKPP070509	T-100...T-112 AC	3...5.5

MANIFOLDS

● MANIFOLD BLOCK ASSEMBLY



TCV-08-84
Opting P port:
P port 1/4BSPP F
for modular blocks

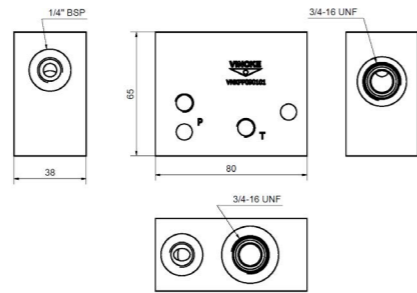
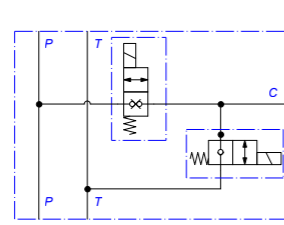


● MANIFOLD TYPES

ORDER CODE	DESCRIPTION	SYMBOL	DIMENSIONS
------------	-------------	--------	------------

VNKPP090101

Modular Manifold additional Single-Action function

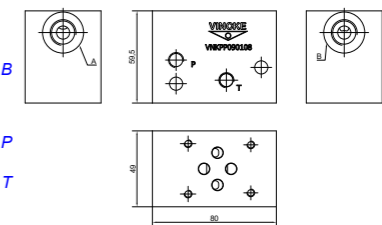
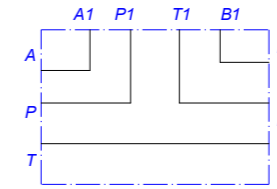


P-T Port: 1/8"BSPP
C Port: 1/4" BSPP
Dimensions in mm

ORDER CODE	DESCRIPTION	SYMBOL	DIMENSIONS
------------	-------------	--------	------------

VNKPP090108

NG8(CETOP3) Modular WManifolds, Series connection Lateral Ports



P-T Port: 1/8"BSPP
A,B Port: 3/8"BSPP
Other porting is available
Dimensions in mm

VNKPP090105	Modular Manifold for 3/4-16 UNF Cartridges, Two Way, Two Position		<p>P-T Port: 1/8"BSPP P1 C1 Port: 1/4"BSPP C2 Port: 3/8"BSPP Other porting is available Dimensions in mm</p>
-------------	---	--	--

VNKPP090109	NG6(CETOP3) Modular Manifolds Parallel Connection Rear Ports.		<p>P T Port: 1/8"BSPP A B Port: 3/8"BSPP Other porting is available Dimensions in mm</p>
-------------	---	--	--

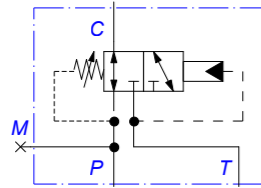
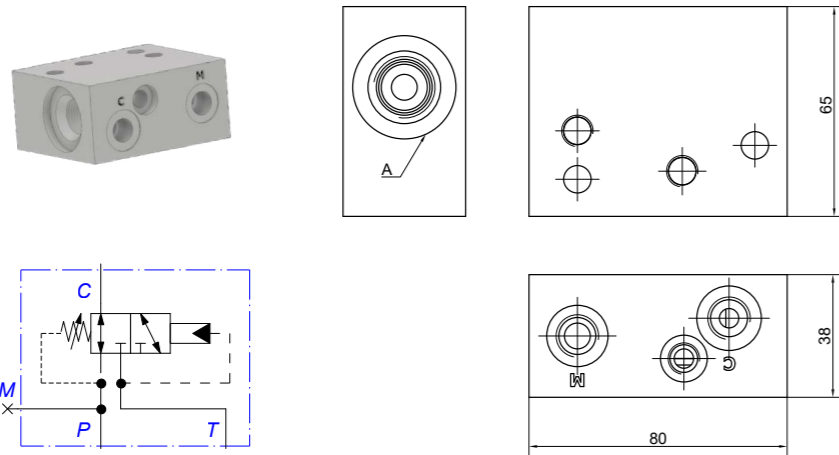
VNKPP090106	Motor Side 90° rotation Manifold		<p>P-T Port: 1/8"BSPP P1 T1 Port: 1/4"BSPP Dimensions in mm</p>
-------------	----------------------------------	--	---

VNKPP090113	Spacer Manifold Adapter		<p>Dimensions in mm</p>
-------------	-------------------------	--	-------------------------

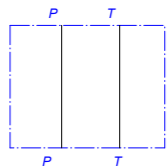
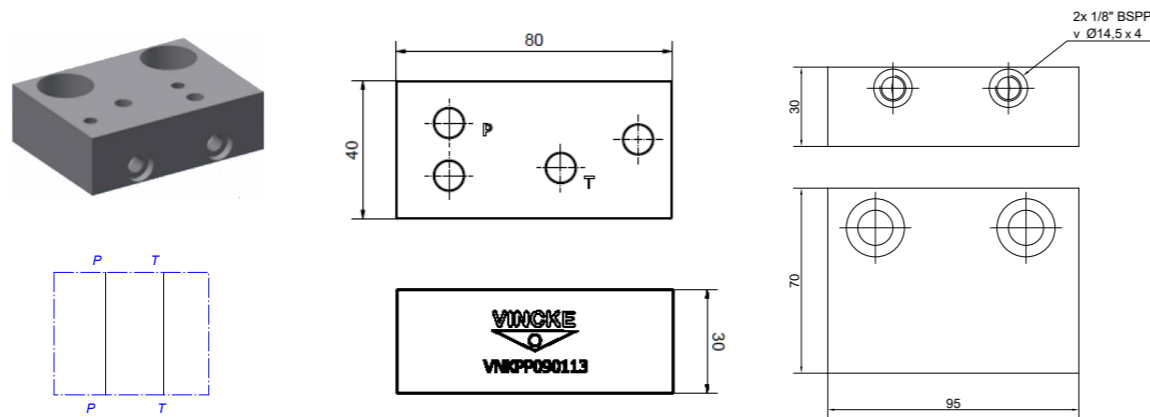
VNKPP090107	Motor Side 90° Rotation Manifold		<p>P T Port: 1/8"BSPP P1 T1 Port: 1/4"BSPP Dimensions in mm</p>
-------------	----------------------------------	--	---

VNKPP090114	NG6(CETOP3) Modular Manifolds Parallel Connection Lateral Ports.		<p>P T Port: 1/8"BSPP A B Port: 3/8"BSPP Other porting is available Dimensions in mm</p>
-------------	--	--	--

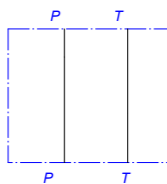
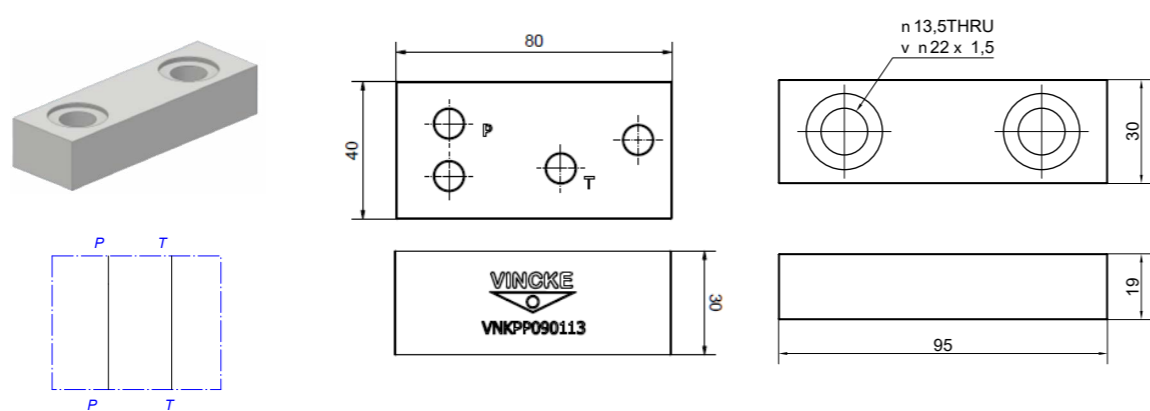
● MANIFOLD PILOTED VALVE (VNKPP090116)



● CONVERTER MANIFOLD K0/K1 (VNKPP090001)



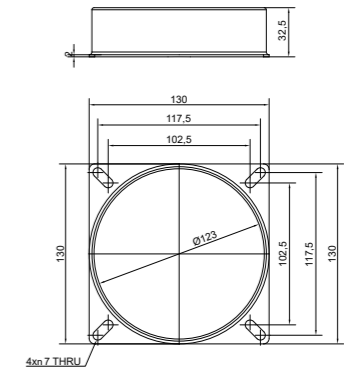
● SPACE MANIFOLD K0 (VNKPP090003)



NECK FOR TANKS

GROUPS K0/K1

● VNKPP100102

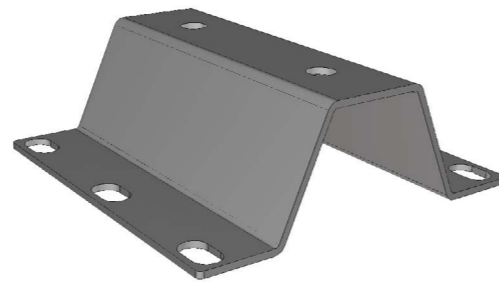
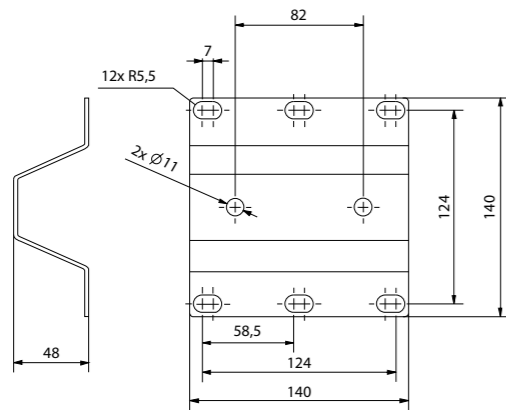


Reference	Dimensions	Type
VNKPP100102	123mm x 25mm	K1

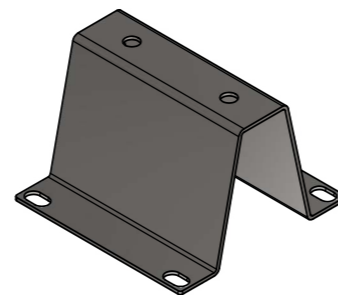
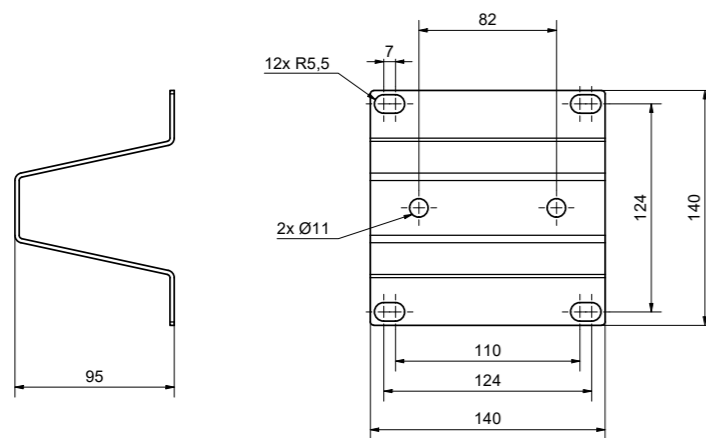
FIXING SUPPORT

GROUPS K0/K1

● VNKPP100103



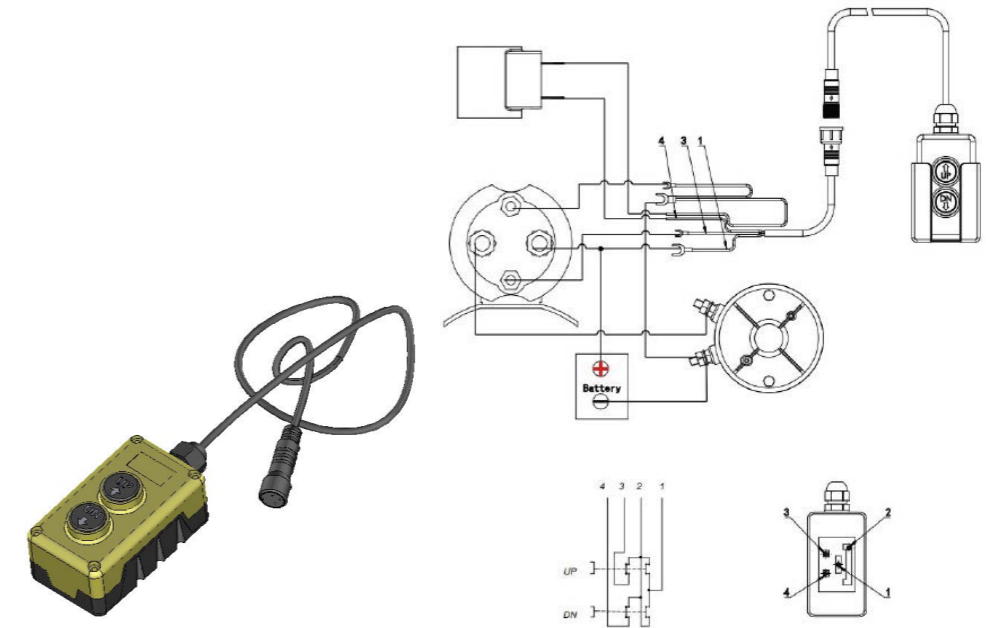
● VNKPP100104



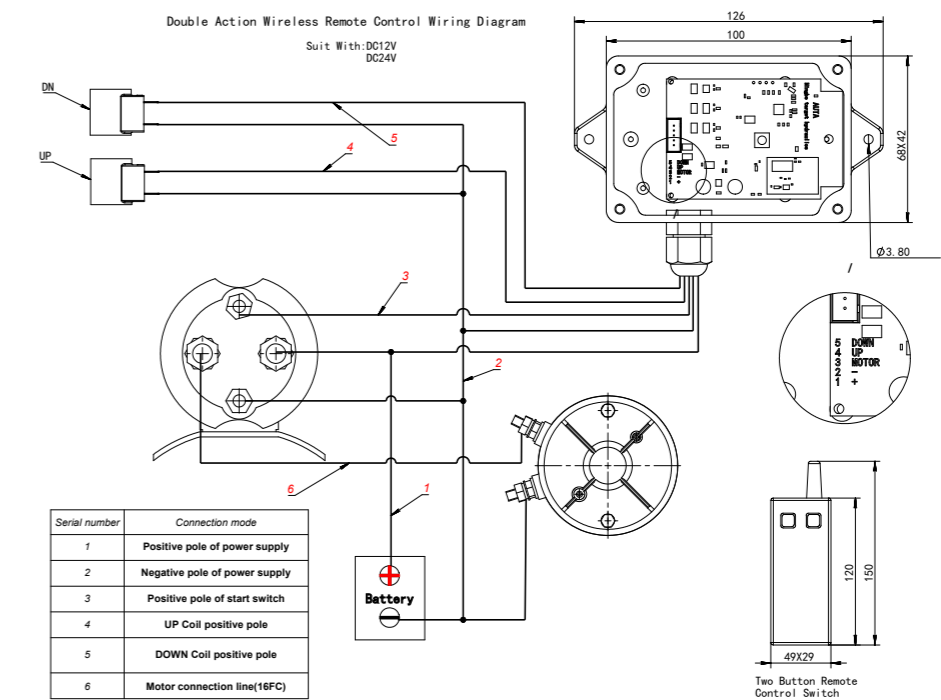
Reference	Dimensions	Type
VNKPP100103	140 X 48	VPP-1
VNKPP100104	140 X 95	VPP-2

REMOTE CONTROL

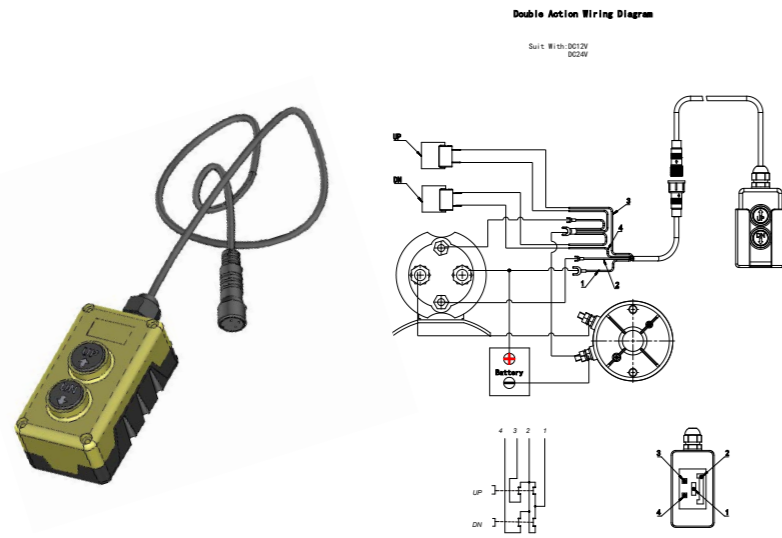
● SINGLE ACTION SWITCH DIAGRAM (VNKPP100110)



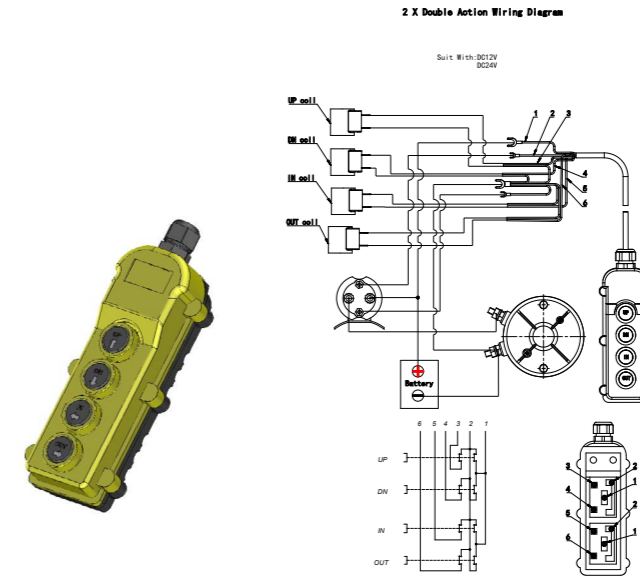
● SINGLE ACTION WIRELESS REMOTE DIAGRAM (VNKPP100200)



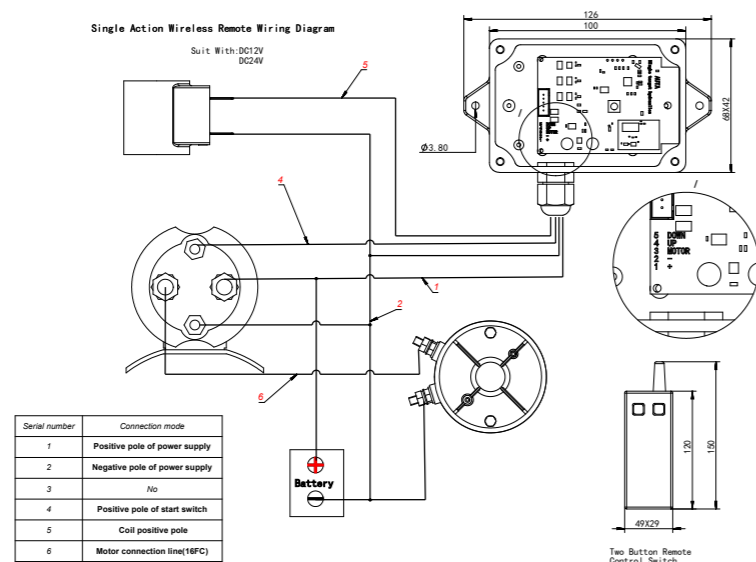
● DOUBLE ACTION SWITCH DIAGRAM (VNKPP100110)



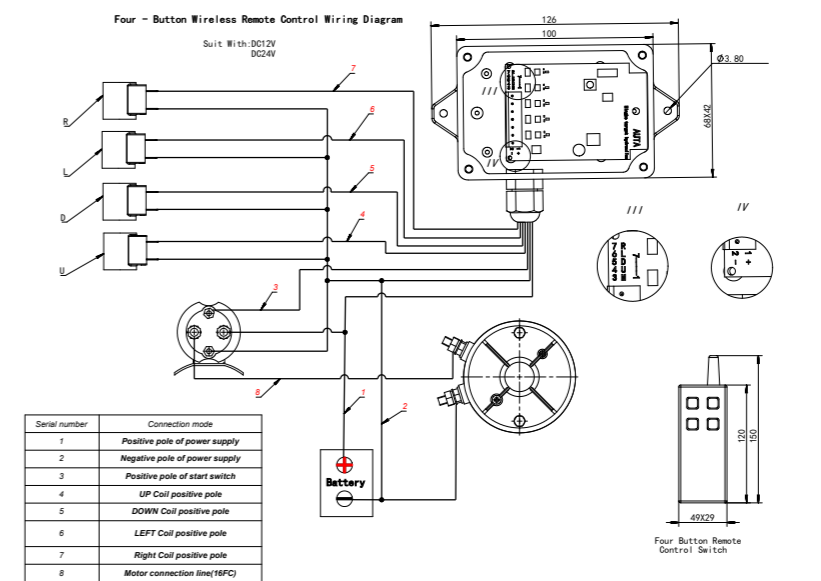
● FOUR BUTTONS DOUBLE ACTION SWITCH DIAGRAM (VNKPP100111)



● DOUBLE ACTION WIRELESS REMOTE DIAGRAM (VNKPP100201)



● FOUR BUTTONS DOUBLE ACTION WIRELESS REMOTE DIAGRAM (VNKPP100202)



REMOTE CONTROL

Reference	Type	N° of buttons	Type
VNKPP100110	Single & Double action 1 cylinder	2	Cable
VNKPP100111	Single & Double action 2 cylinder	4	Cable
VNKPP100200	Single action Wireless	2	Wireless
VNKPP100201	Double action Wireless	2	Wireless
VNKPP100202	Single & Double action Wireless	4	Wireless

POWER PACKS

